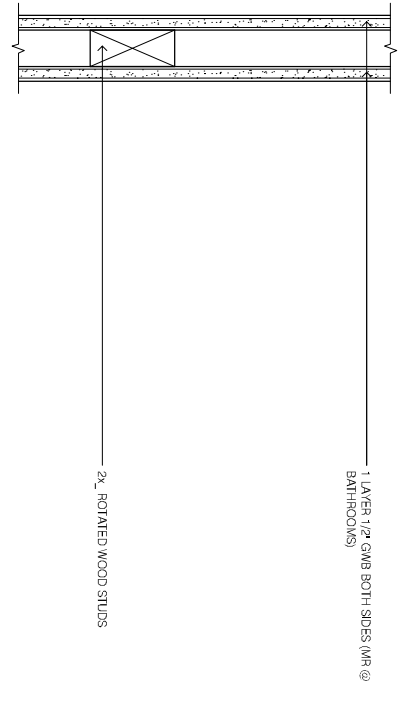


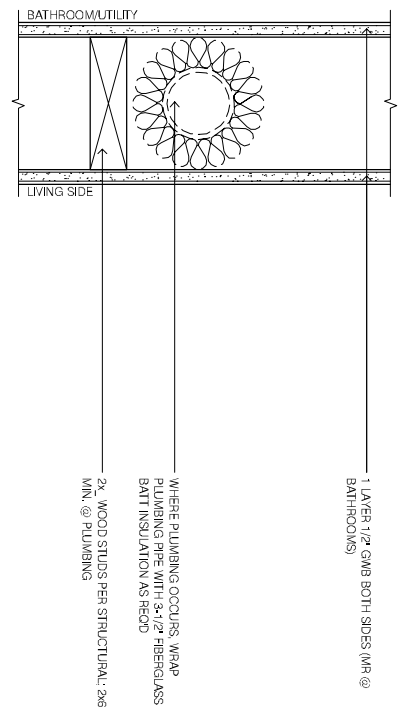
NOTES: WALL/FLOOR/ROOF TYPES

INTERIOR WALL TYPE INDICATION*	EXTERIOR WALL TYPE INDICATION*	FLOOR/CEILING TYPE INDICATION
W 90	W F 2, 1	R W 90
STRUCTURE TYPE SERIES	STRUCTURE CLADDING VARIATION	LOCATION TYPE SERIES

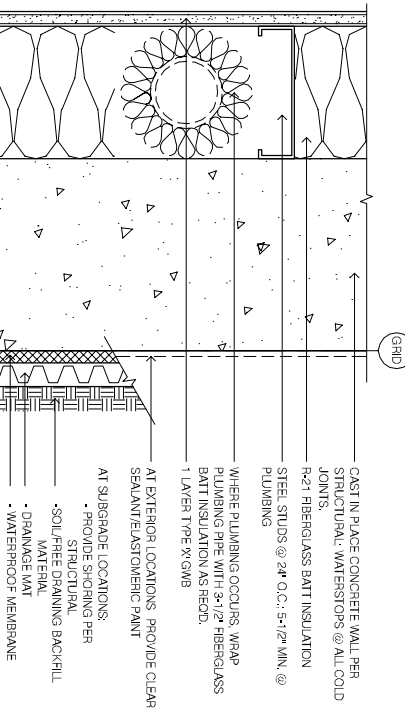
- * FIRE RATING FOR CONCRETE WALL TYPES ARE NOT INDICATED @ HOUR PROVIDED TYPICALLY.
- 1. WALL TYPES MAY OCCUR OUT OF SEQUENCE.
- 2. WOOD FRAMING SIZES ARE PER STRUCTURAL UNLESS NOTED OTHERWISE. WHERE A CONFLICT OCCURS BETWEEN OCCASIONAL AND STRUCTURAL FRAMING, USE LARGER FRAMING SIZE. NOTIFY ARCHITECT WHERE CONFLICTS OCCUR.
- 3. DIMENSIONS ARE SHOWN TO FACE OF CONCRETE. FACE OF SHEATHING @ EXTERIOR WOOD-FRAMED WALLS. FACE OF STUD @ INTERIOR WALLS. GROUNDING AND CENTERLINE OF OPERINGS UNLESS DETAIL OTHERWISE ON DRAWINGS. FRAMING DIMENSIONS HAVE BEEN ROUNDED TO THE NEAREST ONE HALF INCH.
- 4. CONTINUOUS CALKING @ TOP & BOTTOM OF GMB. GMB TO AIR CONT. BEHIND ALTITUDE.
- 5. REFER TO STRUCTURAL DRAWINGS FOR SPECIAL WALL LOCATIONS AND LENGTHS. WHERE SPECIAL PLYWOOD STUDS WITHIN A CONCRETE WALL MAINTAIN FLUSH FINISH FACE BY PROVIDING EXTRA GMB FRAMING.
- 6. FLUSH OUT FINISHES BEYOND 24-HOUR WALL TO NEAREST CORNER AND MAINTAIN THE OUTER WALL PLANE AT OPERING LOCATIONS.
- 7. CONTRACTOR TO VERIFY LOCATION OF STEEL STRUCTURE - COLUMNS AND BEAMS. MAINTAIN INTERGIRT OF ALL STEEL MEMBERS AS SHOWN ON DRAWINGS TO COMPLETION OF WORK. CONTRACTOR TO NOTIFY ARCHITECT IMMEDIATELY OF ALL CONFLICTS.



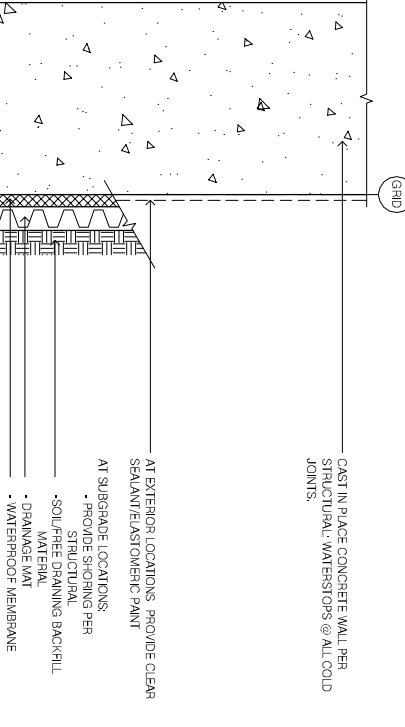
W2 WOOD: INT. PARTITION (ROTATED STUDS)
 Type 3'-11 1/2"
 ASSEMBLY: N/A
 FIRE TEST: N/A
 SOUND: N/A
 NON-RATED PROV.
 NON-PARTED RECD.



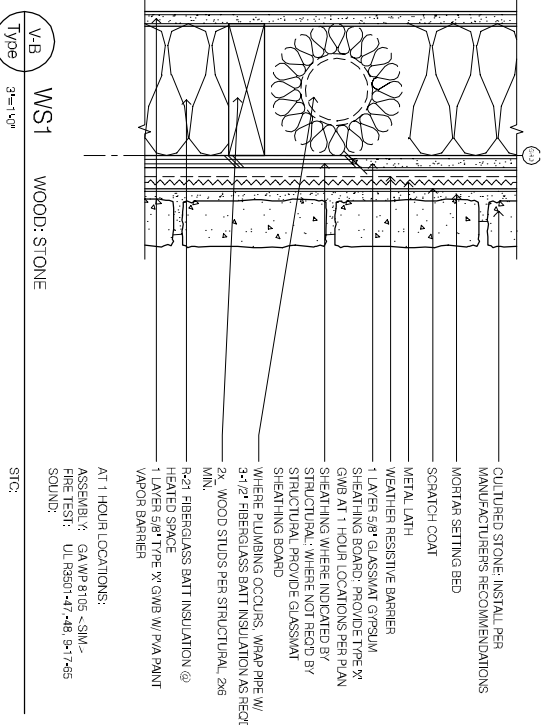
W1 WOOD: INTERIOR PARTITION
 Type 3'-11 1/2"
 ASSEMBLY: N/A
 FIRE TEST: N/A
 SOUND: N/A
 NON-RATED PROV.
 NON-PARTED RECD.



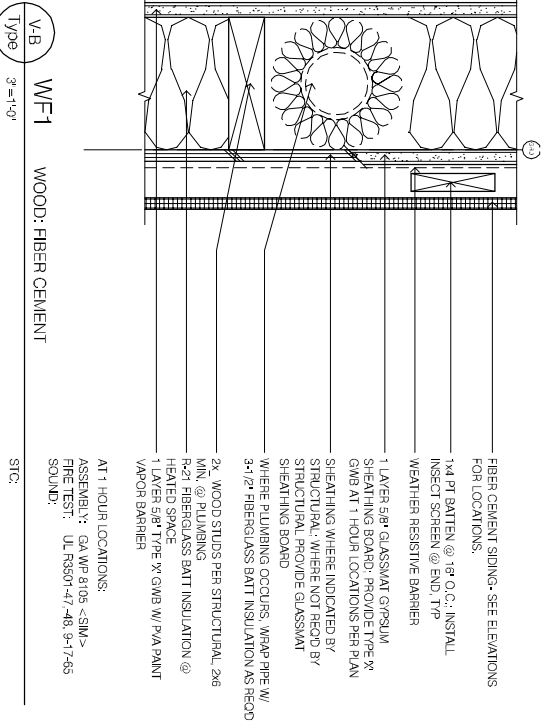
C2 CONCRETE W/ BATT INSULATION
 Type 3'-11 1/2"
 ASSEMBLY: 1BC TABLE 720.112), 4+1
 FIRE TEST: FM WP 380, 947-74
 SOUND: NSC 2377, 5-19-70
 NOTE: PROVIDE EXTERIOR FINISH OR STUD WALL ON BOTH SIDES AS REQUIRED PER PLAN AND FINISH SCHEDULE.



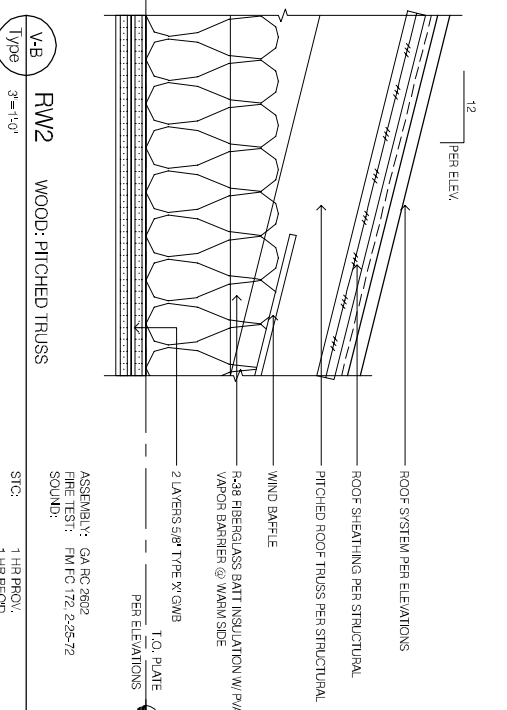
C1 CONCRETE
 Type 3'-11 1/2"
 ASSEMBLY: 1BC TABLE 720.112), 4+1
 FIRE TEST: FM WP 380, 947-74
 SOUND: NSC 2377, 5-19-70
 NOTE: PROVIDE EXTERIOR FINISH AS REQUIRED PER PLAN



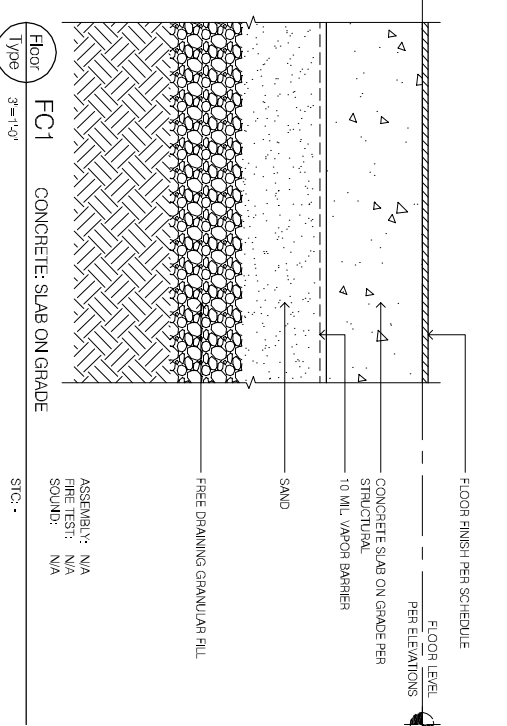
WS1 WOOD: STONE
 Type 3'-11 1/2"
 AT 1 HOUR LOCATIONS:
 ASSEMBLY: GA WP 810S - SIM, FM WP 380, 947-74
 SOUND: UL 550B-17, -68, 3-7-85



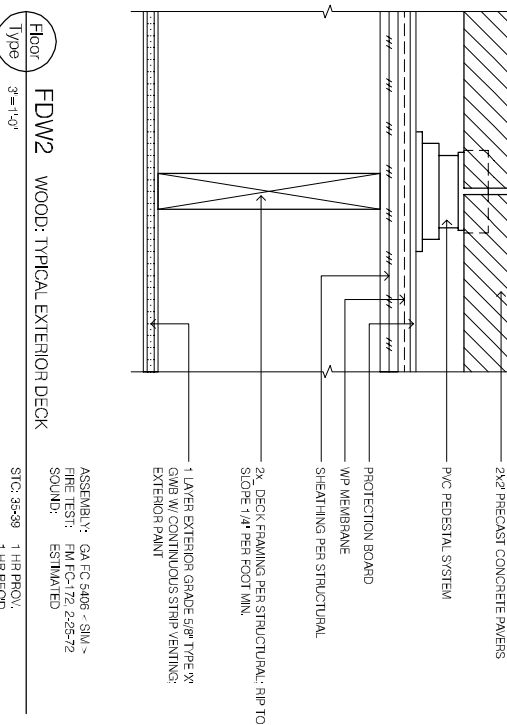
WF1 WOOD: FIBER CEMENT
 Type 3'-11 1/2"
 AT 1 HOUR LOCATIONS:
 ASSEMBLY: GA WP 810S - SIM, FM WP 380, 947-74
 SOUND: UL 550B-17, -68, 3-7-85



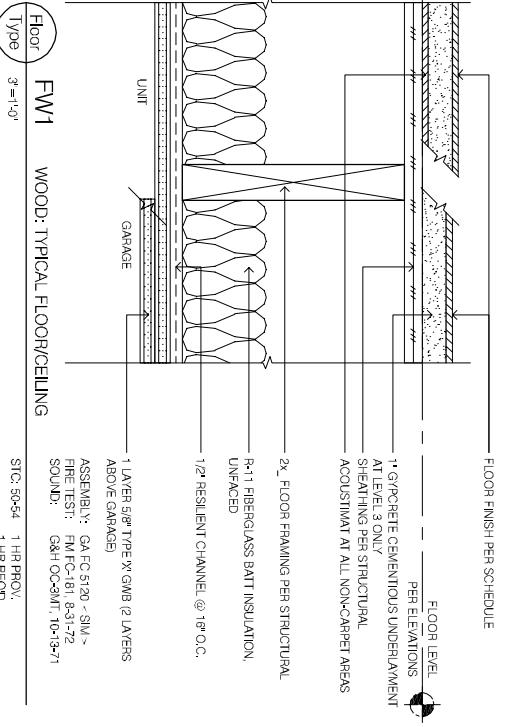
FW2 WOOD: PITCHED TRUSS
 Type 3'-11 1/2"
 ASSEMBLY: GA RC 2802, FM WP 380, 947-74
 SOUND: FM TO 172, 2-25-72
 1 HR. PROV.
 1 HR. RECD.



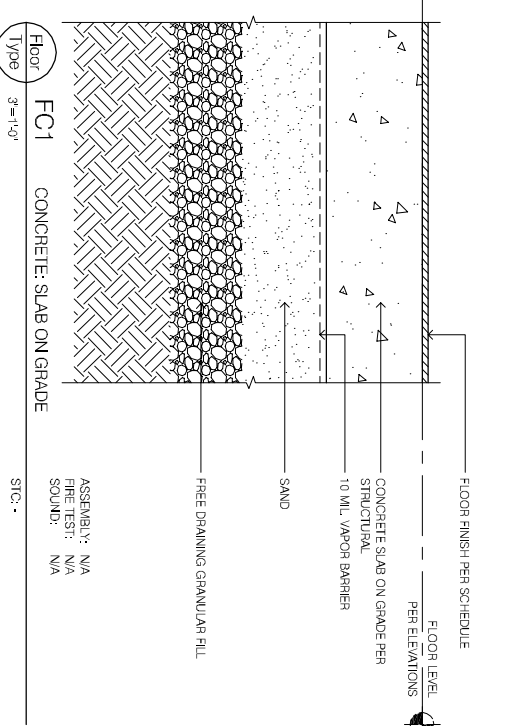
FC1 CONCRETE: SLAB ON GRADE
 Type 3'-11 1/2"
 ASSEMBLY: N/A
 FIRE TEST: N/A
 SOUND: N/A



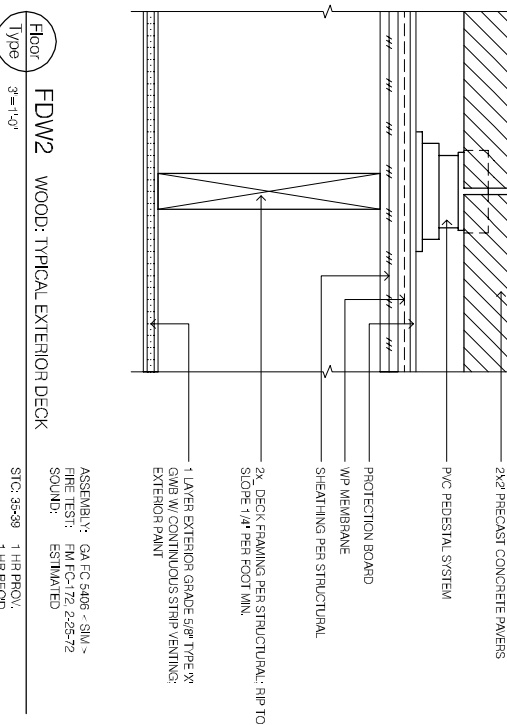
FDW2 WOOD: TYPICAL EXTERIOR DECK
 Type 3'-11 1/2"
 ASSEMBLY: GA FC 540S - SIM, FM WP 380, 947-74
 SOUND: ESTIMATED
 1 HR. PROV.
 1 HR. RECD.



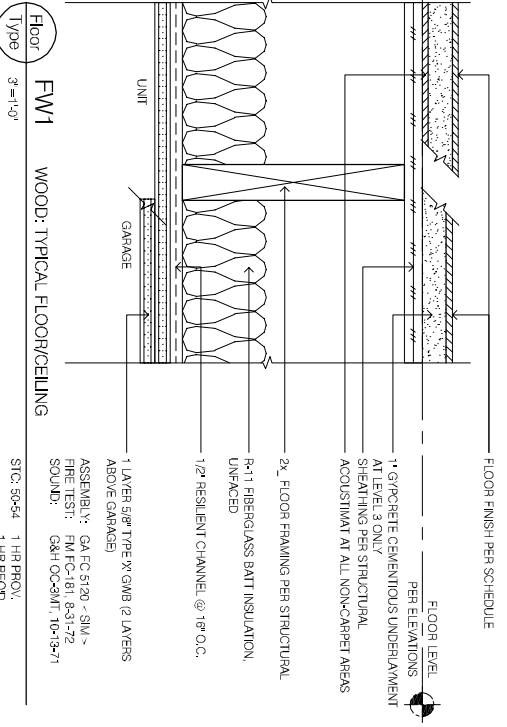
FW1 WOOD: TYPICAL FLOOR/CEILING
 Type 3'-11 1/2"
 ASSEMBLY: GA FC 5102 - SIM, FM WP 380, 947-74
 SOUND: GMH CC5416F, 10-19-71
 1 HR. PROV.
 1 HR. RECD.



W11 WOOD: PARTY W/ PLUMBING
 Type 3'-11 1/2"
 ASSEMBLY: GA FILE NO. WP 5530, FM WP 380, 947-74
 SOUND: NSC 2377, 5-19-70
 2 HR. PROV.
 1 HR. RECD.



W10 WOOD: PARTY
 Type 3'-11 1/2"
 ASSEMBLY: GA FILE NO. WP 5530, FM WP 380, 947-74
 FIRE TEST: FM WP 380, 947-74
 SOUND: NSC 2377, 5-19-70
 2 HR. PROV.
 1 HR. RECD.



W3 WOOD: HEATED TO UNHEATED
 Type 3'-11 1/2"
 ASSEMBLY: N/A
 FIRE TEST: N/A
 SOUND: N/A
 NON-RATED PROV.
 NON-PARTED RECD.