

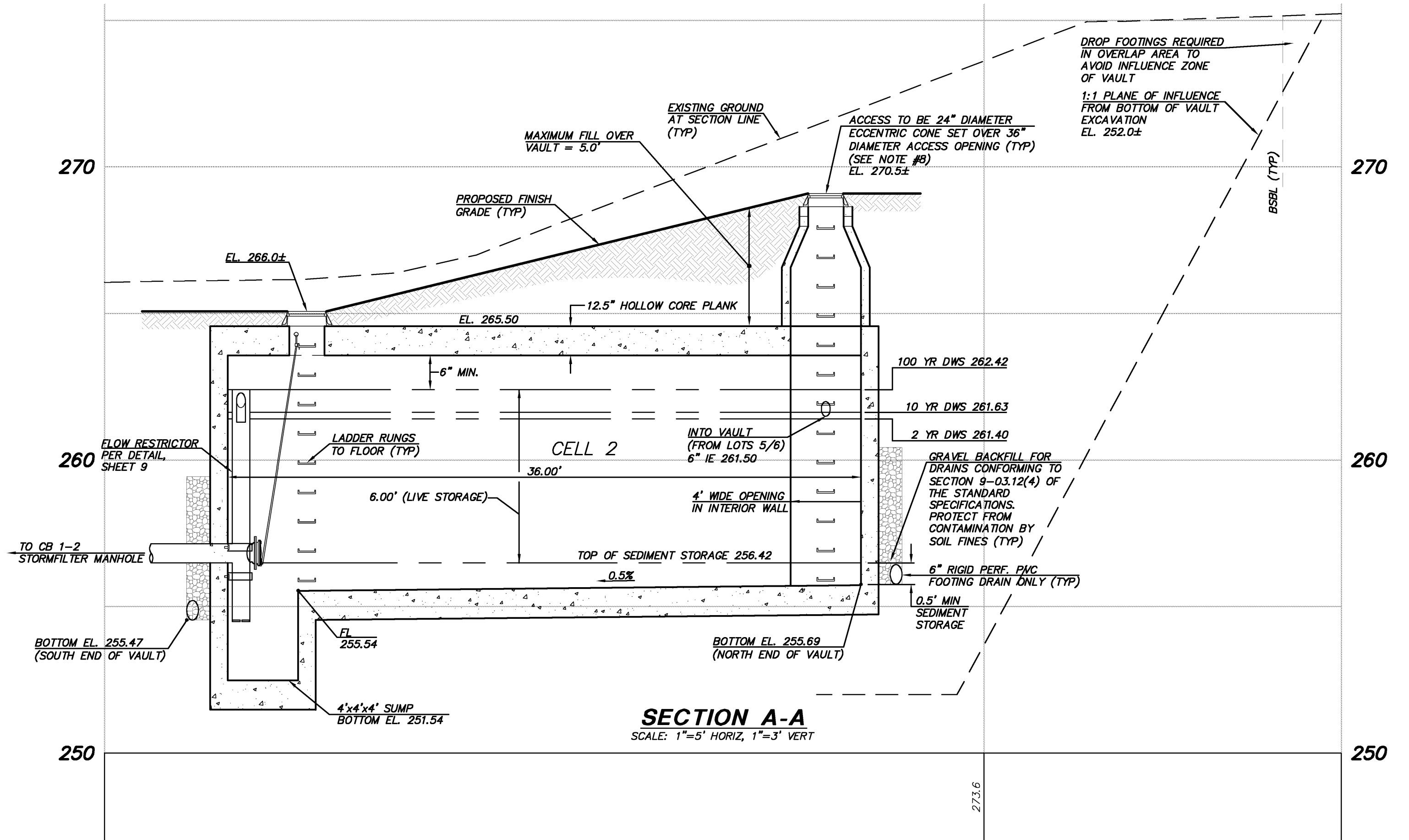
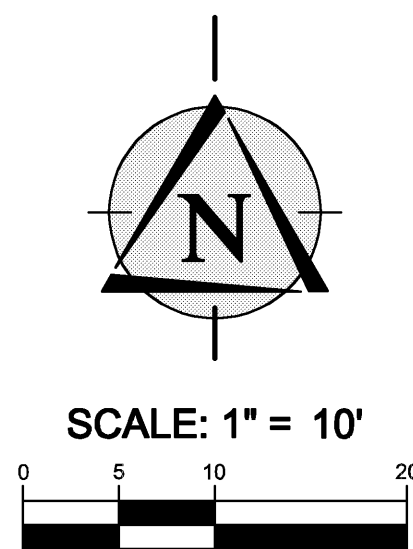
VAULT PLAN VIEW
SCALE: 1"=10'

VAULT TO BE DESIGNED BY A STRUCTURAL ENGINEER FOR H-20 LOADING. SEE SEPARATE PERMIT PLANS PREPARED BY CT ENGINEERS.

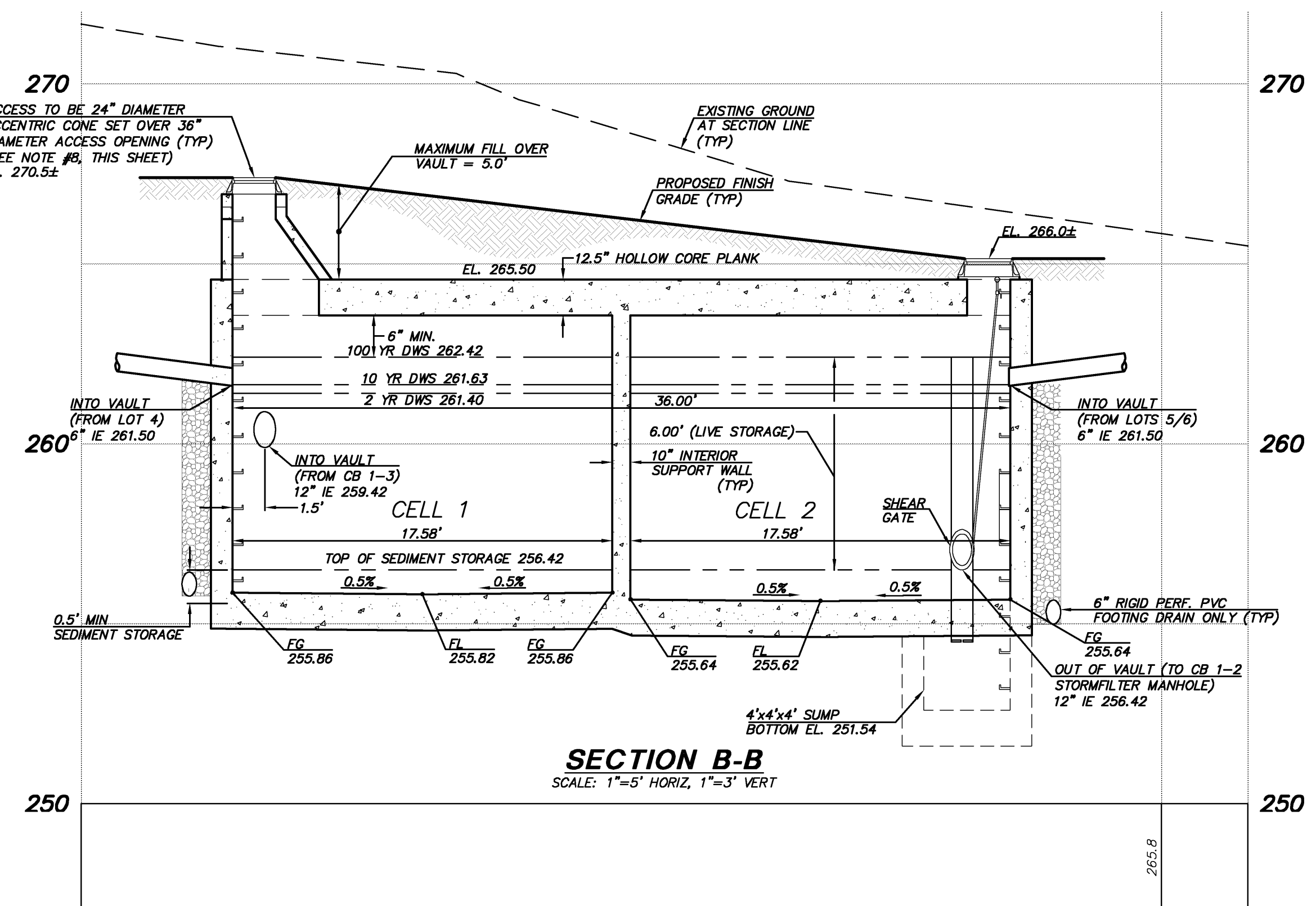
DETENTION VAULT VOLUME AND RELEASE RATES			
ITEM	REQUIRED	DESIGNED	AS-BUILT
LIVE STORAGE	7,469 CF	7,524 CF	
2-YEAR DISCHARGE	0.06 CFS	0.06 CFS	
10-YEAR DISCHARGE	0.35 CFS	0.26 CFS	
100-YEAR DISCHARGE	0.64 CFS	0.64 CFS	

AREA TO THE VAULT = 6.04 ACRES. WATER QUALITY PROVIDED BY A 3 CARTRIDGE STORMFILTER MANHOLE.

- DETENTION VAULT NOTES:**
1. BAFFLE WALL TO DIVIDE VAULT INTO TWO APPROXIMATELY EQUAL SIZE CELLS.
 2. MINIMUM ONE ACCESS MANHOLE PER CELL WITH AT LEAST ONE ACCESS PER 50' VAULT LENGTH OR WIDTH.
 3. PROVIDE WATER STOP AT ALL CAST-IN-PLACE CONSTRUCTION JOINTS. PRE-CAST VAULTS SHALL HAVE APPROVED RUBBER GASKET SYSTEM.
 4. VAULT SHALL BE DESIGNED AND STAMPED BY A REGISTERED STRUCTURAL ENGINEER. VAULT SHALL BE DESIGNED FOR HS-20 TRAFFIC LOADINGS, MINIMUM.
 5. ALL METAL PARTS SHALL BE CORROSION RESISTANT.
 6. PROVIDE LADDER RUNGS IMMEDIATELY ADJACENT TO ALL INLET/OUTLET PIPES.
 7. ALL INLETS TO FIRST CELL EXCEPT AS SHOWN ON PLANS.
 8. IF PROPOSED COVER IS GREATER THAN 1', THEN IT MUST BE 2.5' MINIMUM TO ACCOMMODATE A 48" ECCENTRIC CONE SET OVER 36" MIN. DIAMETER ACCESS OPENING.



SECTION A-A
SCALE: 1"=5' HORIZ, 1"=3' VERT



SECTION B-B
SCALE: 1"=5' HORIZ, 1"=3' VERT

© 2009 TRIAD ASSOCIATES

REVIEWED BY:				DATE:	
NO	DATE	BY	APPR	REVISIONS	
1	11/17/09	DAM	RAT	PER CITY COMMENTS	
2	3/10/10	DAM	RAT	PER CITY COMMENTS	



12112 115th Ave. NE
Kirkland, WA 98034-8929
425.821.8448
425.821.3481 fax
800.488.0750 toll free
www.triadassociates.net



RICHARD A. TOMKINS, PE
PROJECT MANAGER
ROBERT E. WALLIS, PLS
PROJECT SURVEYOR
RICHARD A. TOMKINS, PE
PROJECT ENGINEER
JEFFREY L. COX, ASLA 6/5/09
LANDSCAPE ARCH DATE
SCALE: AS SHOWN VERT. AS SHOWN HORIZ.
CITY OF BELLEVUE, WASHINGTON

GRIFFITH
1405 148TH AVE NE
09-114657 UE

UTILITY GRID #	GRID J-6
VAULT PLAN AND SECTIONS	
JOB NUMBER:	05-289
SEC 27 TWP 25 RGE 5	SHT 8 OF 9