

NOTES REGARDING WORK WITHIN THE NGPA:

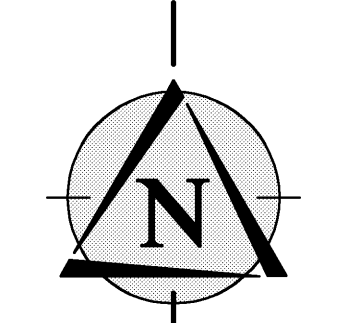
1. ALL WORK/DISTURBANCE SHALL REMAIN OUTSIDE OF THE NGPA, EXCEPT AS SHOWN.
2. THE CONTRACTOR SHALL USE THE LEAST IMPACTFUL TOOLS/EQUIPMENT TO MINIMIZE DISTURBANCE TO THE NGPA. ALL NGPA DISTURBANCE SHALL BE REVEGETATED. REFER TO SHEETS 9 AND 10 FOR WETLAND AND BUFFER RESTORATION PLANS.
3. ALL WORK WITHIN THE WETLAND AND STREAM CHANNEL SHALL COMPLY WITH THE PROVISIONS OF THE HYDRAULIC PROJECT APPROVAL ISSUED 1/21/2010 (INCLUDED ON SHEET 7 OF THE UDA PLANS PREPARED BY TRIAD ASSOCIATES, INC. FOR THIS PROJECT).
4. CONNECTION TO METRO SSMH R03-26 SHALL BE DEFERRED AS LATE AS POSSIBLE INTO THE SUMMER DRY SEASON TO MINIMIZE DEWATERING REQUIREMENTS. REFER TO NOTES REGARDING CONNECTION TO KING COUNTY SSMH R03-26 FOR SEWER CONNECTION REQUIREMENTS.
5. FOR THAT PORTION OF THE SEWER LINE LOCATED WITHIN THE WETLAND, IT IS ANTICIPATED THAT SATURATED SOIL CONDITIONS WILL BE ENCOUNTERED DURING EXCAVATION. AT LEAST TWO (2) WEEKS PRIOR TO EXCAVATION, THE APPLICANT SHALL SUBMIT TO BOTH KING COUNTY AND CITY OF BELLEVUE INSPECTION PERSONNEL A GEOTECHNICAL REPORT PROVIDING RECOMMENDATIONS FOR TRENCH DEWATERING, AND SEWER MANHOLE AND PIPE SUPPORT. THE REPORT SHALL DESCRIBE SOIL AND GROUND WATER CONDITIONS EVIDENT NEAR THE TIME OF CONSTRUCTION AND SHALL INCLUDE A DEWATERING PLAN, IF WARRANTED. THE CONTRACTOR WILL BE FURNISHED WITH A COPY OF THIS REPORT AND SHALL FOLLOW ITS RECOMMENDATIONS.
6. THE GEOTECHNICAL ENGINEER'S RECOMMENDATIONS WILL GOVERN, BUT THE CONTRACTOR SHOULD ANTICIPATE THAT ADEQUATE PIPE SUPPORT MAY REQUIRE A GREATER THICKNESS OF PIPE BEDDING MATERIAL TO BE PROVIDED (4 INCHES IS THE MINIMUM). TO PREVENT PIPE SETTLEMENT OR UPLIFT, PIPE ANCHORS HAVE BEEN SPECIFIED (SEE PLAN FOR LOCATIONS). FOUNDATION GRAVEL MAY NEED TO BE INSTALLED IN ORDER TO KEEP THE PIPE ZONE DRY FOR CONSTRUCTION. IN SUCH CASE, OVEREXCAVATION AND PLACEMENT OF "BALLAST" WILL BE REQUIRED. IF ADDITIONAL SUPPORT IS NEEDED, IT MAY BE APPROPRIATE TO WRAP THE FOUNDATION GRAVEL IN A GEOTEXTILE FABRIC.

7. TO FACILITATE DEWATERING OF THE WORK ZONE, SURFACE DISCHARGE FROM THE DETENTION VAULT (OR BAKER TANK, IF UTILIZED) SHALL BE SUSPENDED DURING THE PERIOD OF SEWER CONSTRUCTION WITHIN THE NGPA. IF NECESSARY, STREAM FLOW AND STORM RUNOFF SHALL BE TEMPORARILY INTERCEPTED UPSTREAM OF THE EXCAVATION USING AN INTAKE SLUMP (LIKELY CONSTRUCTED OF PLASTIC SHEETING AND SAND BAGS). COLLECTED FLOWS SHALL BE PIPED OR PUMPED AROUND THE WORK AREA. TURBID WATER SHALL BE PUMPED TO THE DETENTION VAULT / BAKER TANK FOR TEMPORARY STORAGE AND SETTLING.
8. GROUNDWATER ENCOUNTERED DURING EXCAVATION SHALL BE ADDRESSED PER THE GEOTECHNICAL ENGINEER'S RECOMMENDATIONS. IN LIEU OF SURFACE DISCHARGE, PROVIDED A KING COUNTY DISCHARGE AUTHORIZATION IS OBTAINED AND CONDITIONS OF DISCHARGE ARE COMPLIED WITH, GROUND WATER FROM TRENCH DEWATERING MAY BE TEMPORARILY DISPOSED OF BY PUMPING INTO ONSITE METRO SEWER MANHOLE R03-26 AT A MAXIMUM RATE OF 25,000 GALLONS PER DAY.

NOTES REGARDING STORM WATER MANAGEMENT DURING CONSTRUCTION:

1. THIS PROJECT IS SUBJECT TO RAINY SEASON RESTRICTIONS. CLEARING AND GRADING ACTIVITIES MAY NOT BE PERFORMED BETWEEN THE DATES NOVEMBER 1ST THROUGH APRIL 30TH.
2. THE TESC MEASURES SHOWN ON THESE PLANS ARE THE MINIMUM REQUIREMENTS FOR ANTICIPATED SITE CONDITIONS DURING THE COURSE OF CONSTRUCTION. THESE MEASURES SHALL BE UPGRADED OR SUPPLEMENTED AS NEEDED FOR UNEXPECTED STORM EVENTS AND MODIFIED TO ACCOUNT FOR CHANGING SITE CONDITIONS.
3. THIS PROJECT MUST OBTAIN COVERAGE UNDER THE NPDES GENERAL PERMIT FOR DISCHARGE OF STORM WATER RUNOFF DURING CONSTRUCTION. REFER TO SEPARATE STORM WATER POLLUTION PREVENTION PLAN (SWPPP), PREPARED BY TRIAD ASSOCIATES, INCORPORATING THE TESC MEASURES DEPICTED HEREON. THE CONTRACTOR SHALL OBTAIN A COPY OF THE NPDES PERMIT AND THE SWPPP AND REFER TO IT FOR ADDITIONAL REQUIREMENTS AND GUIDANCE RELATED TO CONSTRUCTION PERIOD STORM WATER MANAGEMENT.
4. PER WASHINGTON ADMINISTRATION CODE (WAC) 173.201A-200, THIS PROJECT MUST COMPLY WITH STATE WATER QUALITY STANDARDS AS FOLLOWS:
 - * DISCHARGE IS NOT TO EXCEED 5 NTU OVER UPSTREAM TURBIDITY WHEN UPSTREAM TURBIDITY IS 50 NTU OR LESS; AND
 - * DISCHARGE IS NOT TO EXCEED 10% ABOVE UPSTREAM TURBIDITY WHEN UPSTREAM TURBIDITY IS GREATER THAN 50 NTU.
5. PERFORMANCE MONITORING IS REQUIRED TO DETERMINE COMPLIANCE WITH THESE STANDARDS. A SEPARATE TURBIDITY MONITORING PLAN HAS BEEN PREPARED BY TRIAD ASSOCIATES. THE CONTRACTOR SHALL OBTAIN A COPY OF THIS PLAN AND IMPLEMENT IT.
 - TO FACILITATE COMPLIANCE WITH THE WATER QUALITY STANDARDS DURING CONSTRUCTION, THE CONTRACTOR SHALL EMPLOY THE FOLLOWING DISCHARGE STRATEGY:
 - A. INITIAL APPROACH - DISCHARGE SITE RUNOFF COLLECTED IN THE DETENTION VAULT THROUGH THE SPECIFIED DEWATERING ORIFICE / OUTLET PIPE AND ONTO THE ROCKED OUTFALL LOCATED AT EDGE OF WETLAND. UTILIZE SETTLING IN VAULT AND FILTRATION THROUGH WETLAND VEGETATION TO REMOVE SEDIMENTS PRIOR TO RELEASE TO STREAM. SHOULD THIS PROVE TO BE INADEQUATE TO MAINTAIN TURBIDITY COMPLIANCE, THEN EMPLOY:
 - INSTALL AND MAINTAIN ROCK CONSTRUCTION ENTRANCE PER C.O.B. STD DWG EC-1, SHEET 3
 - INSTALL AND MAINTAIN ROCK CONSTRUCTION ENTRANCE PER C.O.B. STD DWG EC-1, SHEET 3
 - INSTALL AND MAINTAIN ROCK CONSTRUCTION ENTRANCE PER C.O.B. STD DWG EC-1, SHEET 3

- B. DISCHARGE OPTION 1 - PUMP SITE RUNOFF COLLECTED IN THE DETENTION VAULT TO A PERFORATED-PIPE DISPERSION SYSTEM INSTALLED ALONG THE 267 CONTOUR ON LOT 6. RELEASED DRAINAGE WILL THUS RECEIVE EXTENDED FILTRATION BY DRAINING THROUGH APPROXIMATELY 1500' OF NATIVE VEGETATION PRIOR TO REACHING THE STREAM. THE PUMP IN THE VAULT SHOULD BE SUSPENDED BELOW A FLOAT SO AS TO DRAW FROM THE MOST CLARIFIED WATER NEAR THE SURFACE. SHOULD THIS PROVE TO BE INADEQUATE TO MAINTAIN TURBIDITY COMPLIANCE, THEN EMPLOY:
 - DISCHARGE OPTION 2 - PUMP SITE RUNOFF COLLECTED IN THE DETENTION VAULT TO A RENTED BAKER TANK / SAND FILTER ASSEMBLY. PUMP FILTERED DISCHARGE TO THE DISPERSION SYSTEM DESCRIBED IN OPTION 1.
- IN LIEU OF SURFACE DISCHARGE, PROVIDED A KING COUNTY DISCHARGE AUTHORIZATION IS OBTAINED AND CONDITIONS OF DISCHARGE ARE COMPLIED WITH, CONSTRUCTION PERIOD RUNOFF MAY BE TEMPORARILY DISPOSED OF BY PUMPING INTO ONSITE METRO SEWER MANHOLE R03-26 AT A MAXIMUM RATE OF 25,000 GALLONS PER DAY.
6. SEE ALSO CITY OF BELLEVUE CLEARING AND GRADING STANDARD NOTES INCLUDED ON SHEET 3.



SCALE: 1" = 30'

VERT. DATUM NAVD 88
HORIZ. DATUM NAD 83

TREE LEGEND

- = EXISTING TREES TO BE REMOVED UNDER PERMIT #09-114656 GE
- = EXISTING TREES TO BE REMOVED UNDER FUTURE PERMIT
- = EXISTING TREES TO BE SAVED

NO ROCKERIES OR WALLS ARE PROPOSED.

OUTFALL ROCK LINING SHALL BE QUARRY SPALLS WITH GRADATION AS FOLLOWS:
PASSING 8-INCH SQUARE SIEVE: 100%
PASSING 3-INCH SQUARE SIEVE: 40-60% MAX.
PASSING 3/4-INCH SQUARE SIEVE: 10% MAX.

CONSTRUCTION SEQUENCE

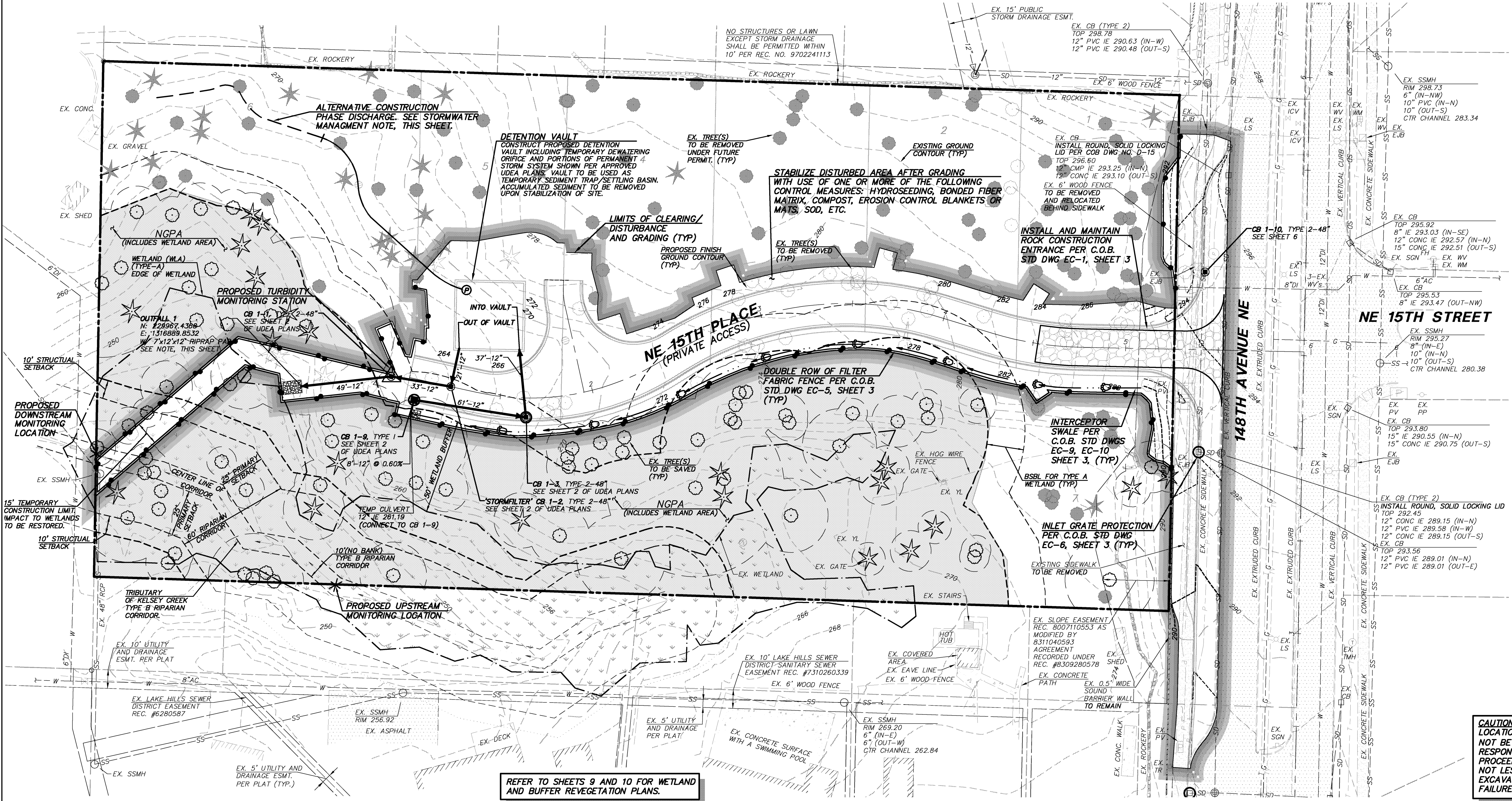
1. SCHEDULE AND HOLD PRE-CONSTRUCTION MEETING WITH CITY INSPECTION PERSONNEL.
2. INSTALL CB INLET PROTECTION.
3. INSTALL FENCES AT LIMITS OF CLEARING.
4. INSTALL CONSTRUCTION ENTRANCE.
5. INSTALL FILTER FABRIC FENCE.
6. CLEAR, GRADE, AND INSTALL SUFFICIENT BASE ROCK ALONG THE ALIGNMENT OF THE PRIVATE ROADWAY TO PROVIDE CONSTRUCTION ACCESS TO THE PROPOSED DETENTION VAULT.
7. CONSTRUCT PROPOSED DETENTION VAULT FOR USE AS TEMPORARY SEDIMENT POND. INSTALL TEMPORARY DEWATERING ORIFICE IN VAULT OUTLET.
8. INSTALL THE FOLLOWING ELEMENTS OF THE PERMANENT STORM SYSTEM: CONNECTING PIPE AND CB'S 1-1, 1-2 (LESS FILTER CARTRIDGES), 1-3, AND 1-9.
9. INSTALL RIP-RAP OUTFALL, AND REMAINING TESC MEASURES.
10. CLEAR FOR, AND GRADE REMAINING PORTIONS OF SITE TO ACCOMMODATE INSTALLATION OF SITE IMPROVEMENTS. EXTEND TEMPORARY SWALES AS NEEDED TO INTERCEPT AND DIRECT STORM WATER RUNOFF TO THE VAULT.
11. CONSTRUCT SITE IMPROVEMENTS. DEFER CONNECTION TO KING COUNTY (METRO) SSMH R03-26, AND PIPE RUN TO KING COUNTY #1 AS LATE AS POSSIBLE INTO THE SUMMER DRY SEASON TO MINIMIZE DEWATERING NEEDS. SUSPEND VAULT DISCHARGE TO OUTFALL OR TEMPORARY DISPERSION SYSTEM WHILE SEWER CONSTRUCTION IN NGPA IS UNDERWAY.
12. STABILIZE SITE. CLEAN AND REMOVE SEDIMENTS FROM VAULT, AND CONVEYANCE SYSTEM.
13. REMOVE TESC MEASURES ONLY AFTER APPROVAL BY CITY INSPECTOR.

SENSITIVE AREAS NOT TO BE DISTURBED

CONTRACTOR TO MAINTAIN PEDESTRIAN ACCESS ALONG 148TH AVE NE DURING CONSTRUCTION.

DEMOLITION AND CONSTRUCTION SHALL CONFORM TO THE REQUIREMENTS OF THE IFC, CHAPTER 14.

CAUTION
LOCATION OF EXISTING UTILITIES SHOWN IS APPROXIMATE AND MAY NOT BE ACCURATE OR ALL INCLUSIVE. IT IS THE CONTRACTOR'S RESPONSIBILITY TO FIELD VERIFY LOCATION OF UTILITIES PRIOR TO PROCEEDING WITH CONSTRUCTION. YOU MUST CALL 1-800-424-5555 NOT LESS THAN 2 FULL BUSINESS DAYS BEFORE BEGINNING EXCAVATION WHERE ANY UNDERGROUND UTILITIES MAY BE LOCATED. FAILURE TO DO SO COULD MEAN BEARING SUBSTANTIAL REPAIR COSTS.



© 2009 TRIAD ASSOCIATES

NO	DATE	BY	APPR	REVISIONS
1	11/17/09	DAM	RAT	PER CITY COMMENTS
2	3/10/10	DAM	RAT	PER CITY COMMENTS

TRIAD ASSOCIATES
Land Development Consultants

12112 115th Ave. NE
Kirkland, WA 98034-6929
425.821.8448
425.821.3481 fax
800.488.0756 toll free
www.triadassociates.net



RICHARD A. TOMKINS, PE
PROJECT MANAGER
ROBERT E. WALLIS, PLS
PROJECT SURVEYOR
RICHARD A. TOMKINS, PE
PROJECT ENGINEER
JEFFREY L. COX, ASLA 6/5/09
LANDSCAPE ARCH DATE
SCALE: HORIZ: 1"=30' VERT: N/A

GRIFFITH
1405 148TH AVE NE
09-114656 GE

CITY OF BELLEVUE,

WASHINGTON

UTILITY GRID #	GRID J-6
CLEARING, GRADING AND TESC PLAN	
JOB NUMBER:	05-289
SEC 27 TWP 25 RGE 5	SHT 2 OF 10