

**COPYRIGHT NOTICE**

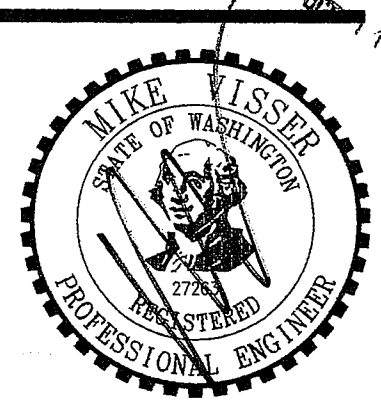
THIS PLAN IS ISSUED FOR SINGLE USE PURPOSES BY THE CLIENT INDICATED. REPRODUCTION OR USE OF THIS DOCUMENT WITHOUT THE EXPRESS WRITTEN CONSENT OF ARCHITECT JOHN G. NASON, IS PROHIBITED. ARCHITECT MAINTAINS ALL RIGHTS UNDER STATE AND FEDERAL LAW, INCLUDING COPYRIGHT.

**LIABILITY LIMIT NOTICE**

NOTICE: DRAWING PACKAGE PREPARED FOR PERMITTING REVIEW ONLY. ARCHITECT NOT RESPONSIBLE FOR CONSTRUCTION COMPLIANCE UNLESS RETAINED FOR FULL INSPECTION SERVICES.

**NOTICE TO CONTRACTOR**

CONTRACTOR SHALL VERIFY ALL CONDITIONS AND DIMENSIONS AT THE JOB SITE AND NOTIFY THE ARCHITECT OF ANY DIMENSIONAL ERRORS, OMISSIONS OR DISCREPANCIES BEFORE BEGINNING OR FABRICATING ANY WORK. DO NOT SCALE DRAWINGS.



EXPRES Oct. 21, 2009

**VISSER ENGINEERING**

3455 SOUTH 344th WAY  
SUITE 230  
FEDERAL WAY, WA 98001

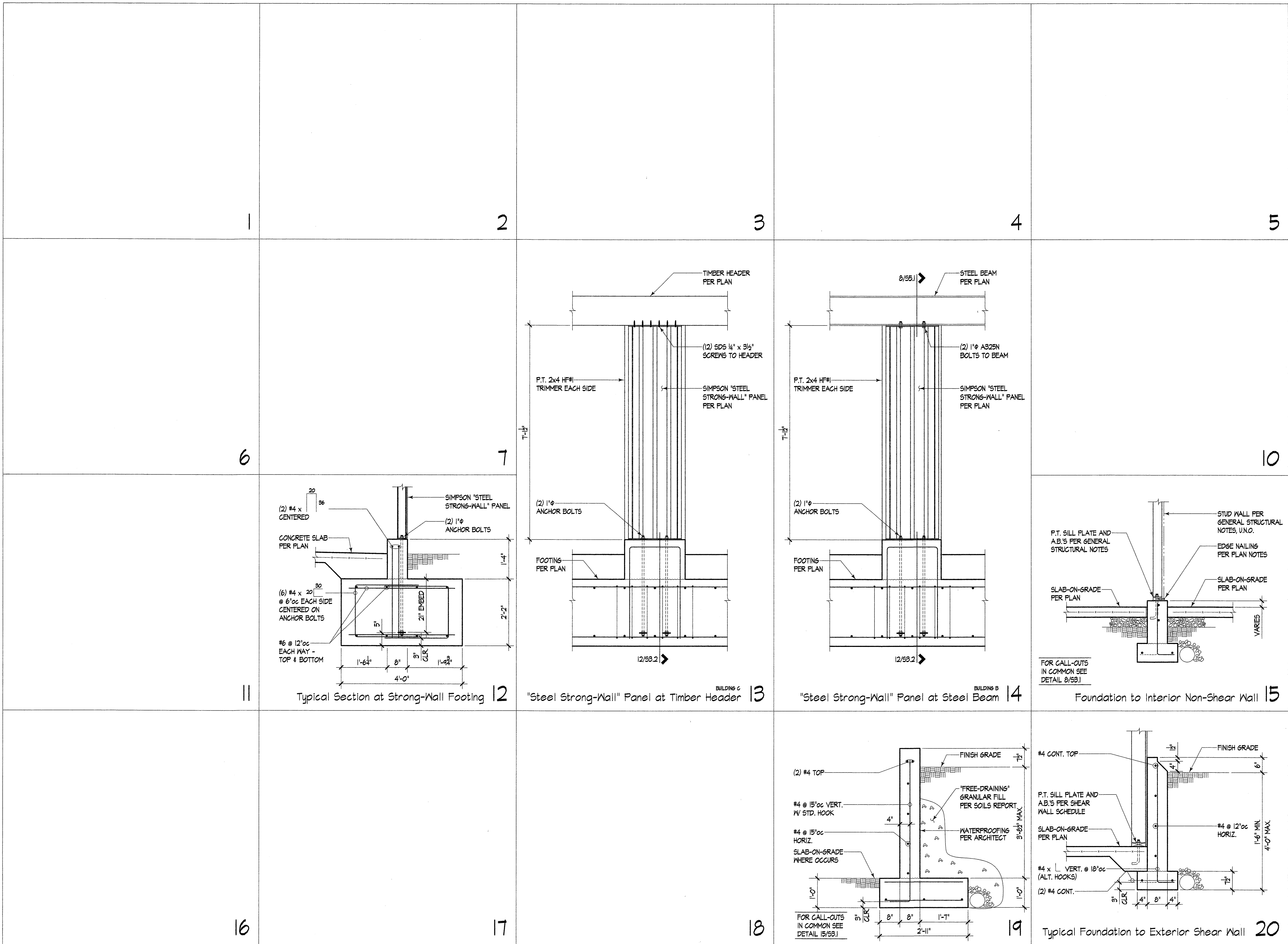
VOICE: (253) 835-0810  
FAX: (253) 835-0813

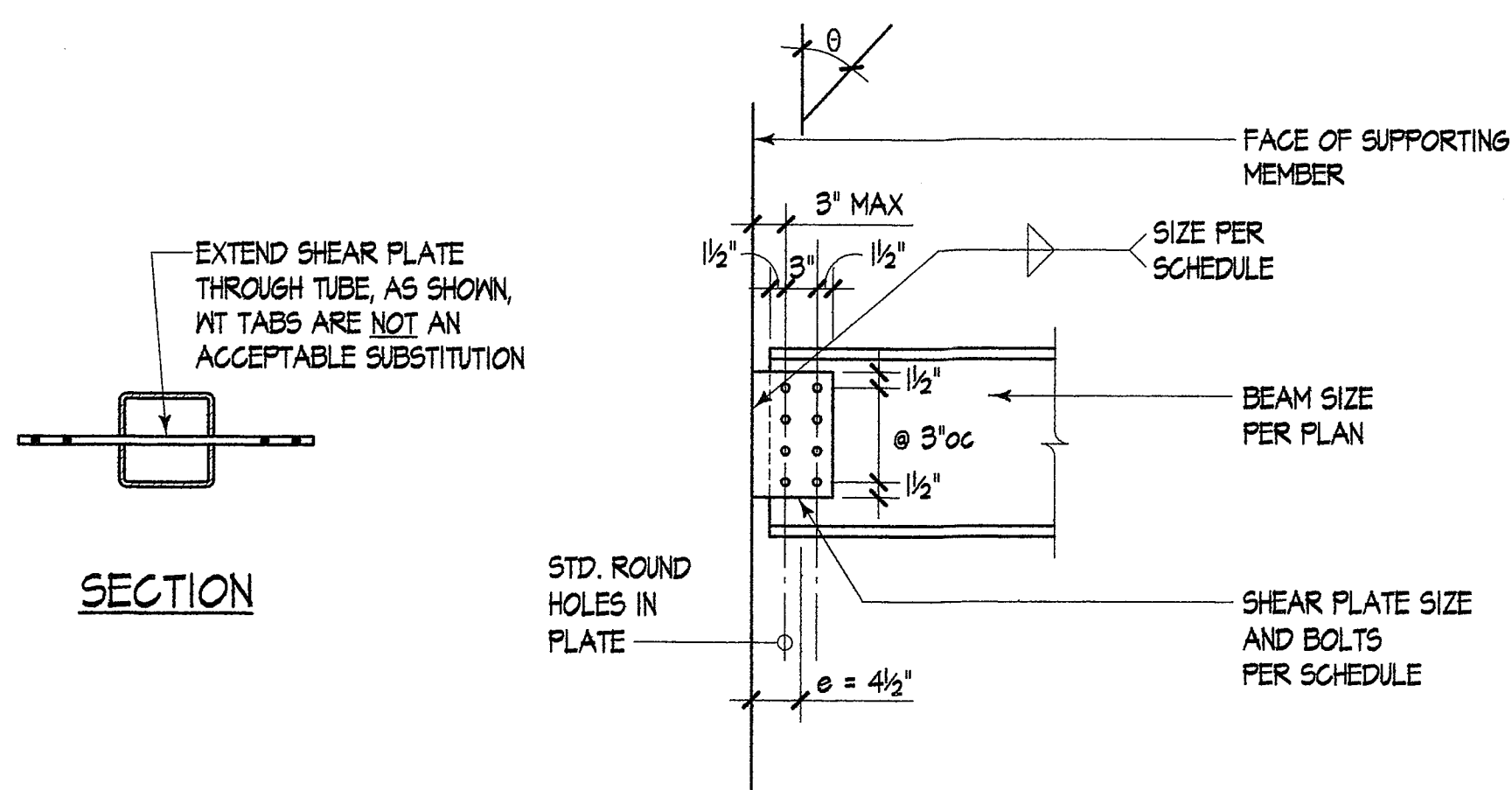
**AZURE RIDGE APT'S.**  
AN APARTMENT COMMUNITY KING COUNTY, WA  
FOR: GCG INVESTMENTS (Mr. GLENN GONZALES)  
23414 SE 251st PLACE  
MAPLE VALLEY, WA 98038  
206-313-0190

**CONCRETE DETAILS**

PROJECT NO. : 07-134  
DRAWN : WSW / TVJ  
DESIGN : BTS  
CHECKED : MDV  
ISSUE DATE : 10/12/07  
LATEST REV. : .

**S3.2**

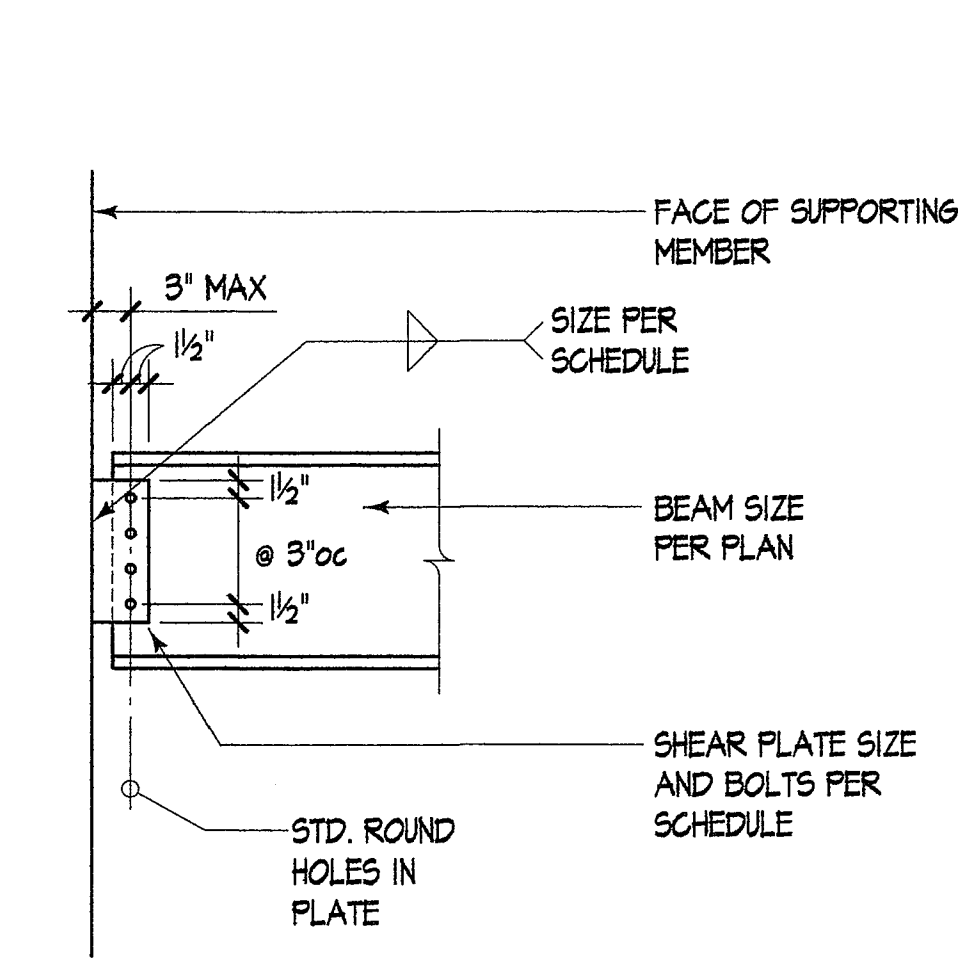




BEAM SIZE	# OF BOLTS PER VERT. ROW	PLATE THICKNESS	WELD SIZE	ANGLE OF LOAD (θ)											
				15°		30°		45°		60°		75°			
				ΦP11 HORZ.	ΦP11 VERT.	ΦP11 HORZ.	ΦP11 VERT.	ΦP11 HORZ.	ΦP11 VERT.	ΦP11 HORZ.	ΦP11 VERT.	ΦP11 HORZ.	ΦP11 VERT.		
W8, W10	2	3/8"	3/8"	9k	33k	18k	31k	29k	28k	43k	25k	64k	17k		
W12, W14	3	3/8"	1/4"	16k	60k	33k	57k	51k	51k	72k	42k	100k	27k		
W16, W18	4	3/8"	1/4"	25k	95k	51k	88k	77k	77k	105k	60k	136k	37k		
W21	5	3/8"	1/4"	36k	133k	70k	122k	105k	105k	139k	80k	174k	47k		
W24	6	3/8"	3/8"	47k	175k	91k	158k	133k	133k	173k	100k	213k	57k		
W27	7	3/8"	3/8"	58k	218k	113k	195k	163k	163k	210k	121k	251k	67k		
W30	8	3/8"	3/8"	70k	263k	136k	235k	194k	194k	245k	141k	291k	78k		
W36	9	3/8"	3/8"	82k	307k	158k	273k	225k	225k	281k	162k	331k	89k		

NOTES:  
 1. BOLTS = 7/8"φ A325N  
 2. PLATE MATERIAL = A36  
 3. CAPACITY BASED ON AISC LRFD DESIGN MANUAL, THIRD EDITION, TABLE T-10, SINGLE SHEAR, STANDARD HOLES.  
 4. φ = 0.75

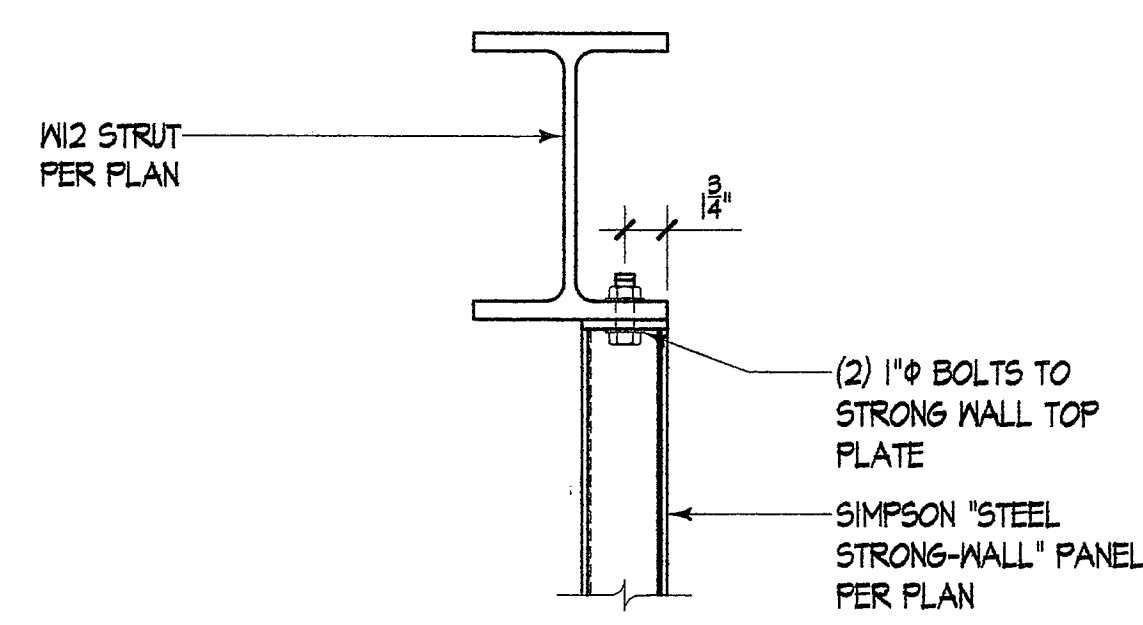
Strut Connection Schedule: 7/8"φ A325N BOLTS 3



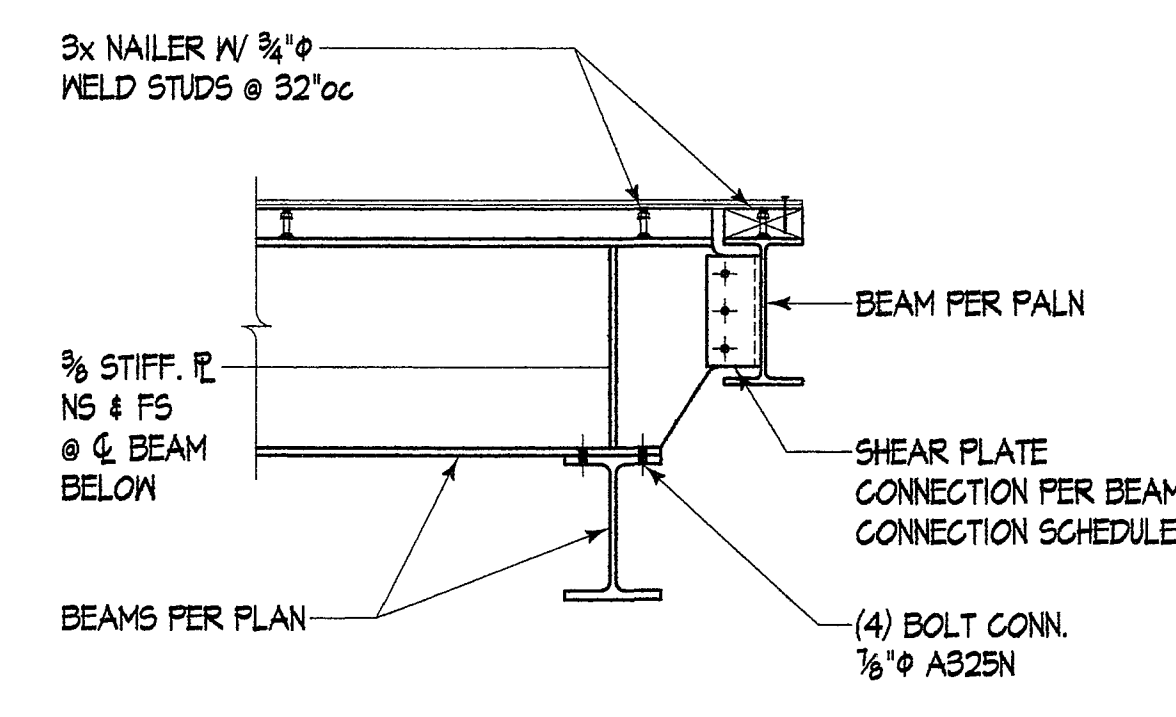
BEAM SIZE	NO. OF BOLTS	PLATE THICKNESS	WELD SIZE	φRn
W8, W10	2	1/4"	3/8"	19.0k
W12, W14	3	1/4"	3/8"	31.9k
W16, W18	4	3/8"	1/4"	60.8k
W21	5	3/8"	3/8"	84.4k
W24	6	3/8"	3/8"	108.0k
W27	7	3/8"	3/8"	131.0k
W30	8	3/8"	3/8"	144.0k
W36	9	3/8"	3/8"	156.0k

NOTES:  
 1. BOLT TYPE = 7/8"φ A325N, PRETENSIONED  
 2. PLATE MATERIAL = A36  
 3. CAPACITY BASED ON AISC LRFD DESIGN MANUAL, THIRD EDITION, TABLE 10-9, FLEXIBLE CONNECTION, STANDARD HOLES.  
 4. φ = 0.75

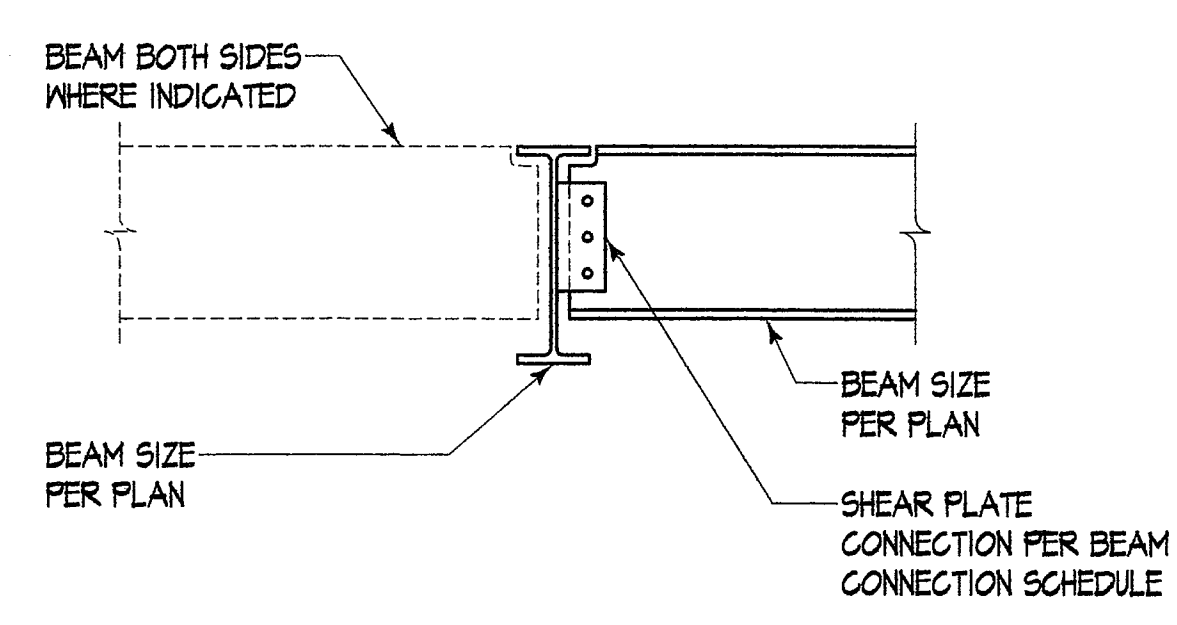
Single Shear PL Connection Schedule: 7/8"φ A325N BOLTS 5



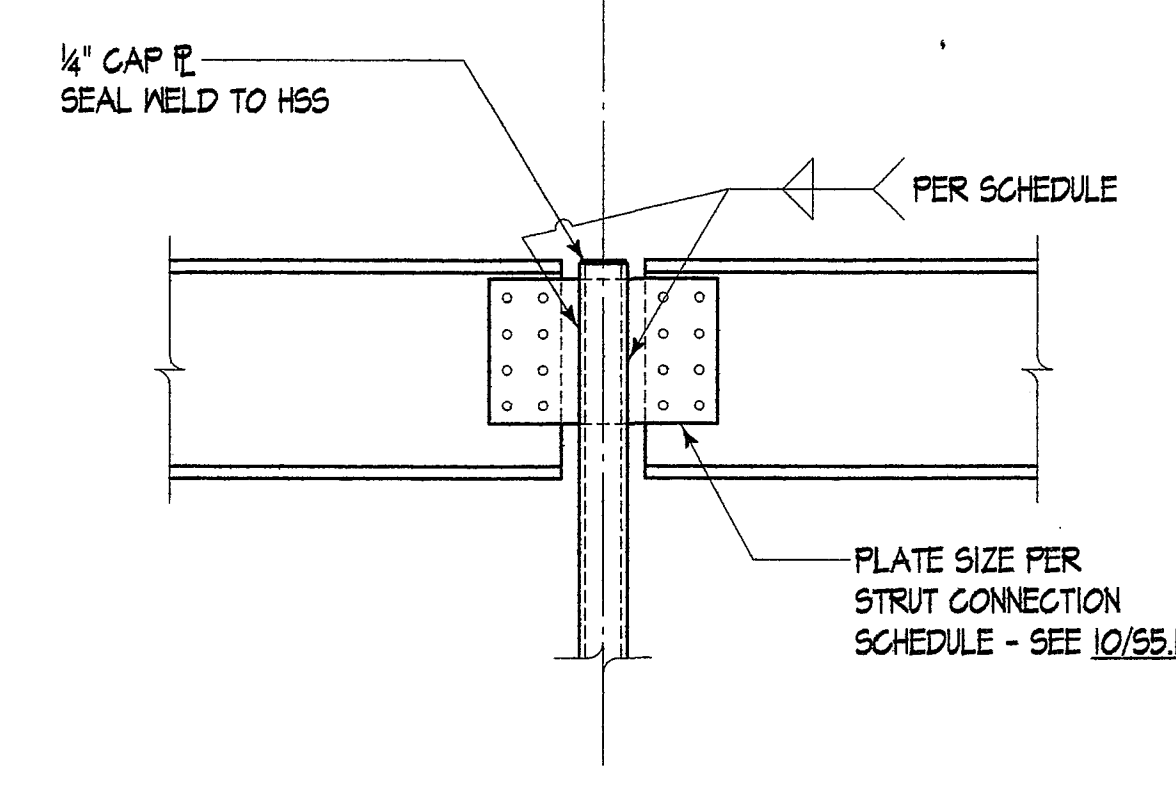
Strong-Wall Panel to Steel Beam 8



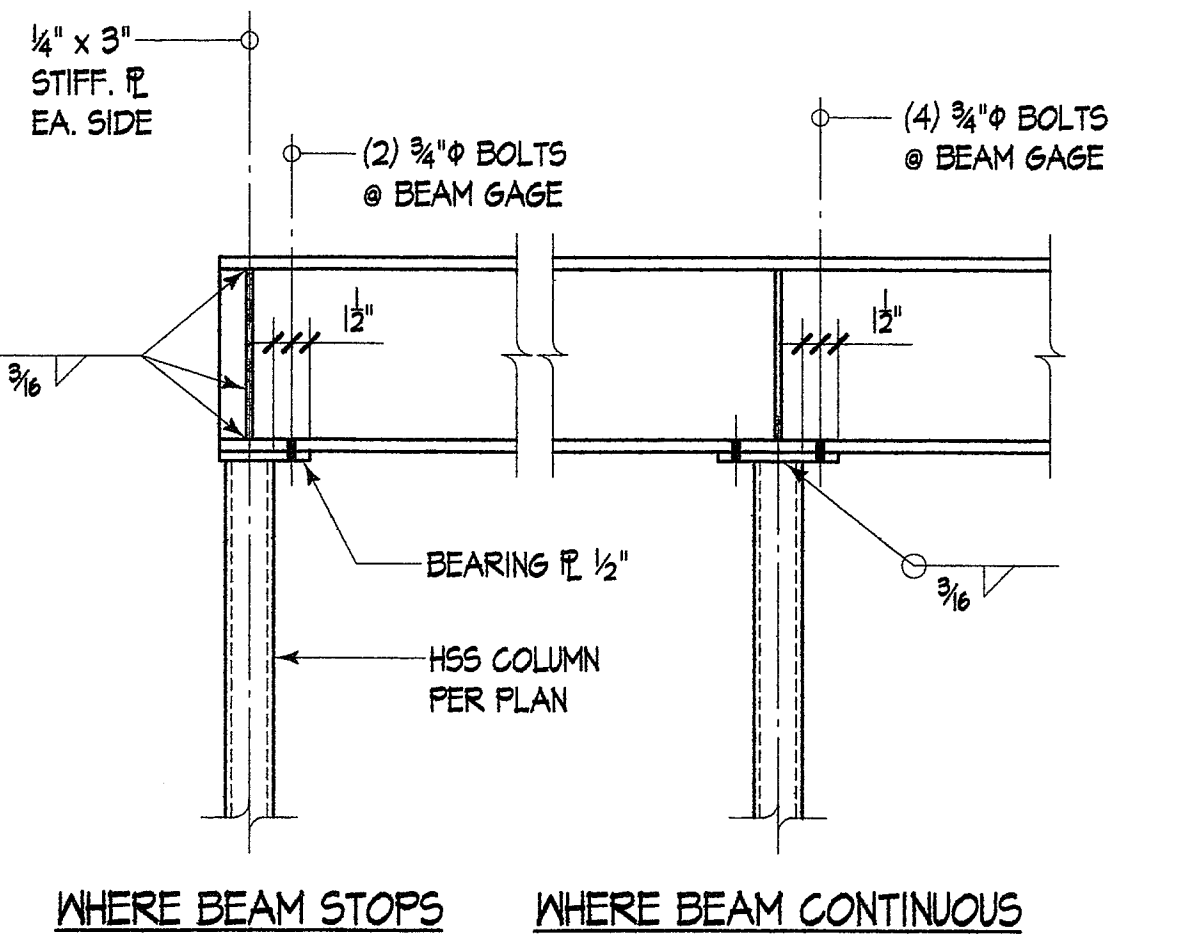
Beam to Beam at Overhang 9



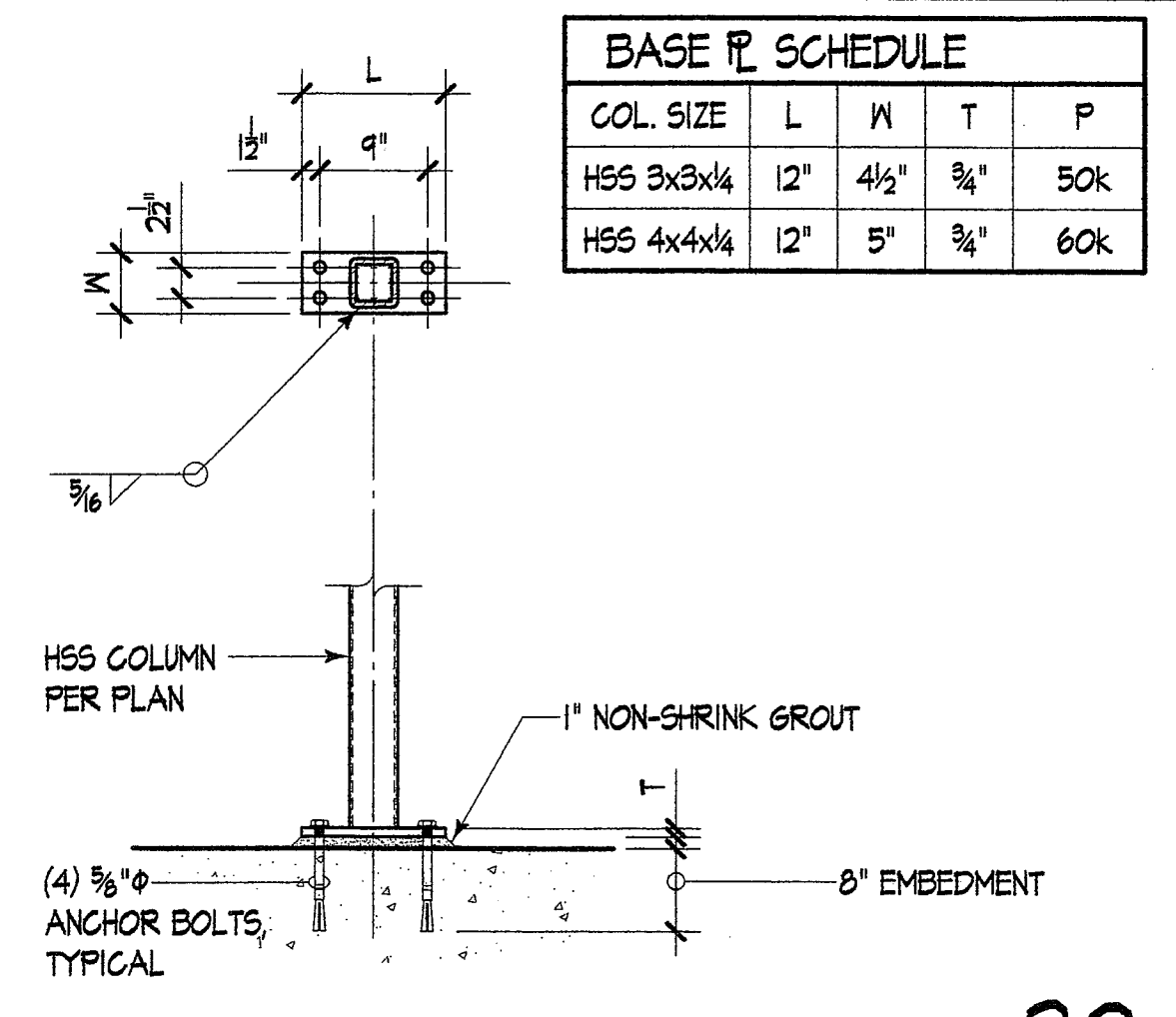
Beam to Beam Connections 10



Beam to HSS Column Connection 14



Beam Bearing on Column Connection 15



BASE PLATE SCHEDULE				
COL. SIZE	L	W	T	P
HSS 3x3x1/4	12"	4 1/2"	3/4"	50k
HSS 4x4x1/4	12"	5"	3/4"	60k

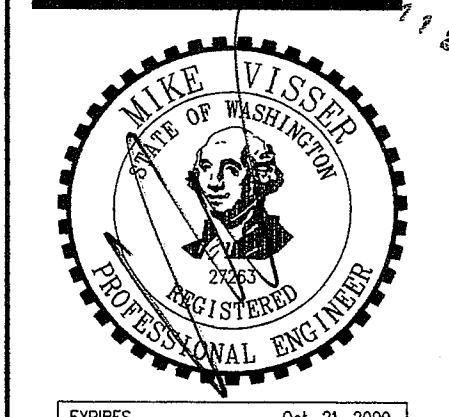
HSS Column Base Plate 20



**JOHN G. NASON**  
 ARCHITECT  
 14405 S.E. 266th ST.  
 KENT, WASHINGTON 98042  
 (253) 631-0294

**COPYRIGHT NOTICE**  
 THIS PLAN IS ISSUED FOR SINGLE USE PURPOSES BY THE CLIENT INDICATED. REPRODUCTION OR USE OF THIS DOCUMENT WITHOUT THE EXPRESS WRITTEN CONSENT OF ARCHITECT, JOHN G. NASON, IS PROHIBITED. ARCHITECT MAINTAINS ALL RIGHTS UNDER STATE AND FEDERAL LAW, INCLUDING COPYRIGHT.  
**LIABILITY LIMIT NOTICE**  
 NOTICE: DRAWING PACKAGE PREPARED FOR PERMITTING REVIEW ONLY. ARCHITECT NOT RESPONSIBLE FOR CONSTRUCTION COMPLIANCE UNLESS RETAINED FOR FULL INSPECTION SERVICES.

**NOTICE TO CONTRACTOR**  
 CONTRACTOR SHALL VERIFY ALL CONDITIONS AND DIMENSIONS AT THE JOB SITE AND NOTIFY THE ARCHITECT OF ANY DIMENSIONAL ERRORS, OMISSIONS OR DISCREPANCIES BEFORE BEGINNING OR FABRICATING ANY WORK. DO NOT SCALE DRAWINGS.

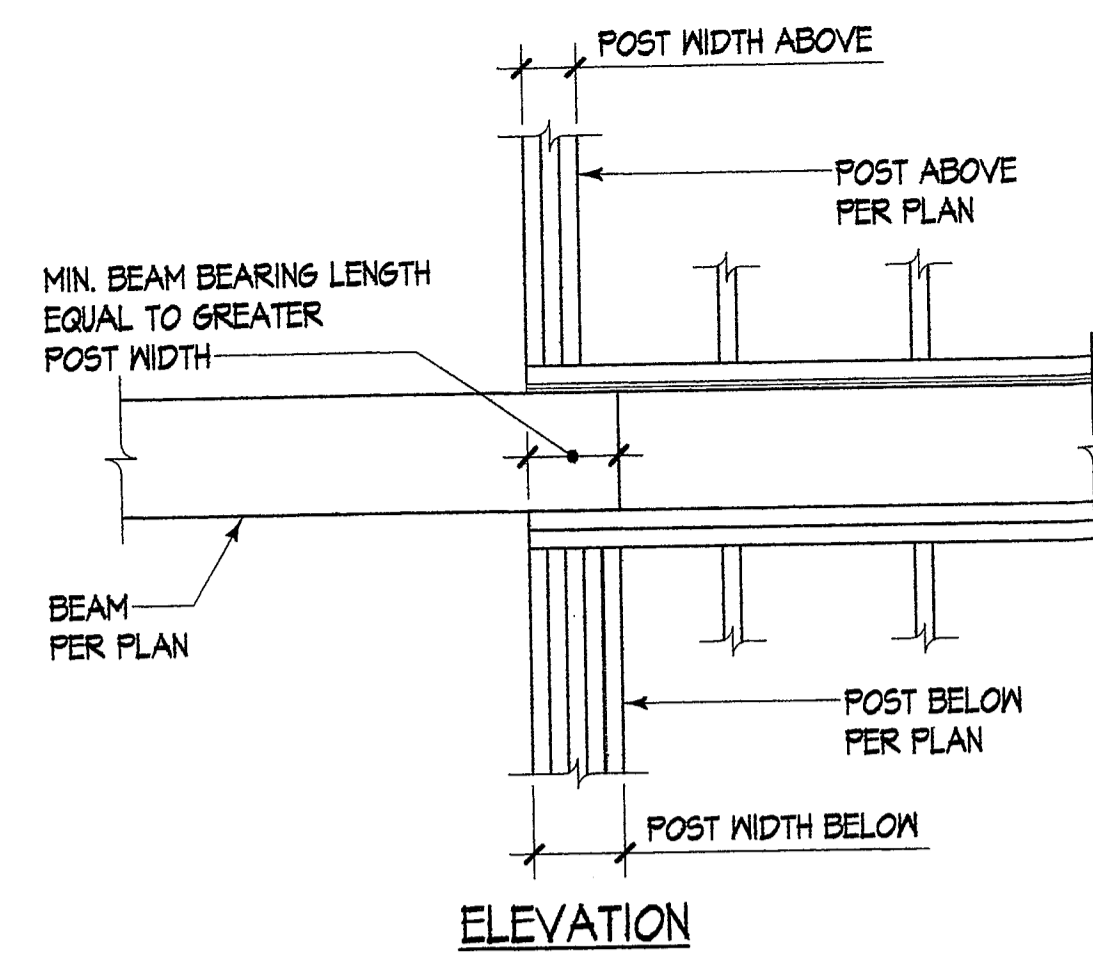


**VISSER ENGINEERING**  
 3455 SOUTH 344th WAY  
 SUITE 230  
 FEDERAL WAY, WA 98001  
 VOICE: (253) 835-0810  
 FAX: (253) 835-0813

**AZURE RIDGE APT'S.**  
 AN APARTMENT COMMUNITY KING COUNTY, WA  
 FOR: GCG INVESTMENTS (Mr. GLENN GONZALES)  
 23414 SE 251st. PLACE  
 MAPLE VALLEY, WA 98038  
 206-313-0190

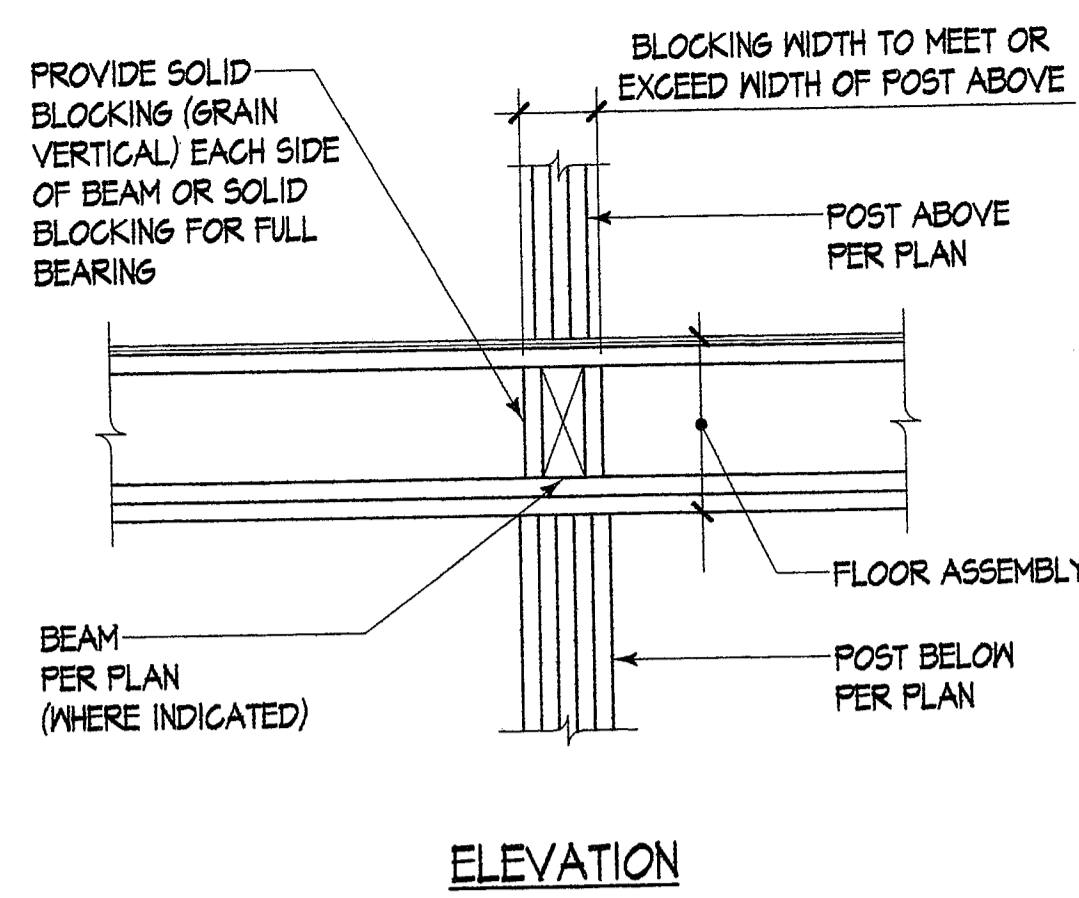
**STEEL DETAILS**  
 PROJECT NO. : 07-134  
 DRAWN : WSW / TVJ  
 DESIGN : BTS  
 CHECKED : MDV  
 ISSUE DATE : 10/12/07  
 LATEST REV. : ..

**S5.1**



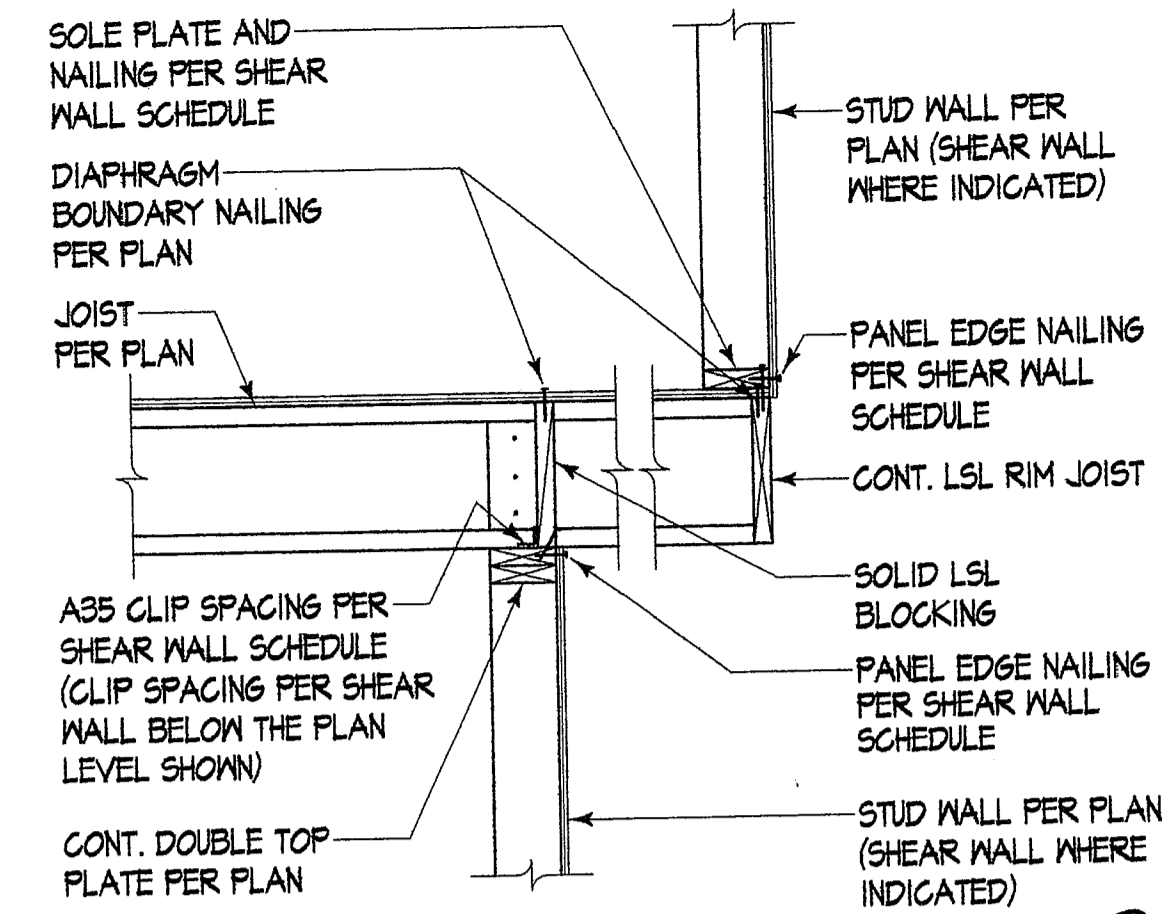
ELEVATION

Beam End Bearing

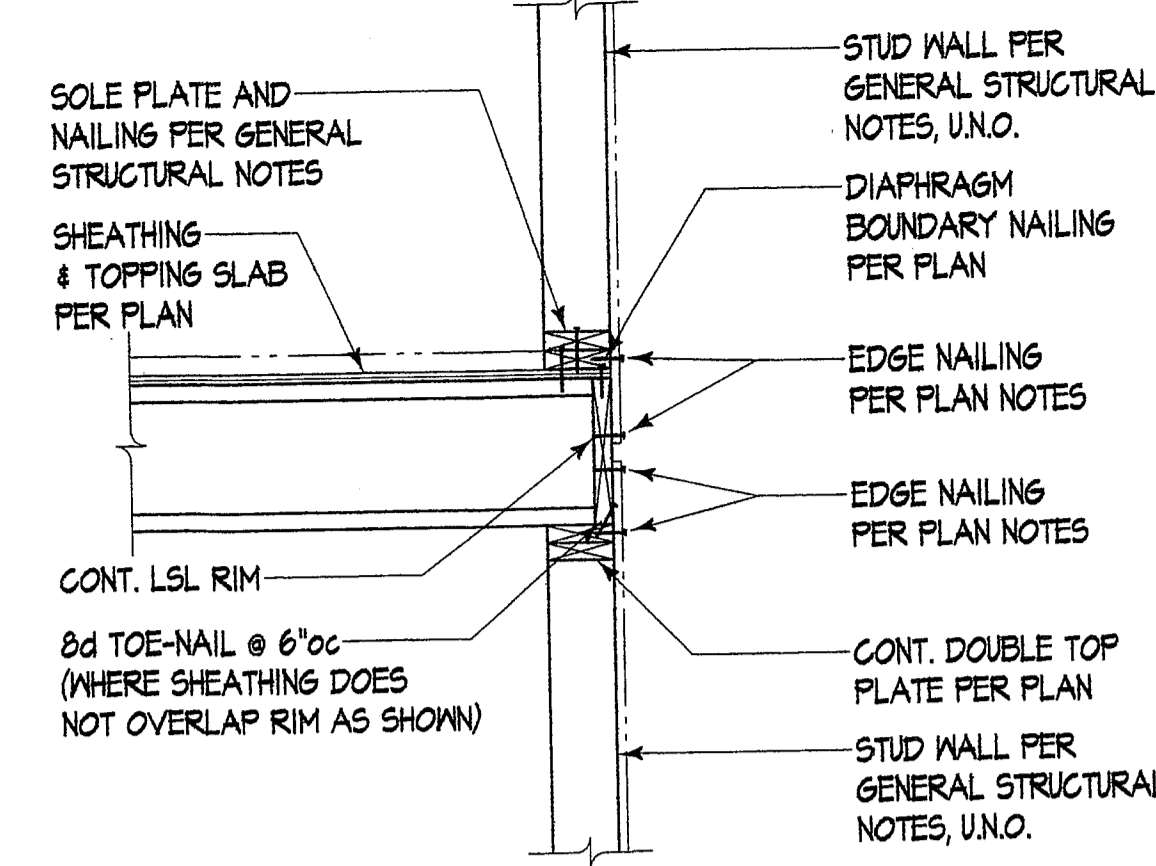


ELEVATION

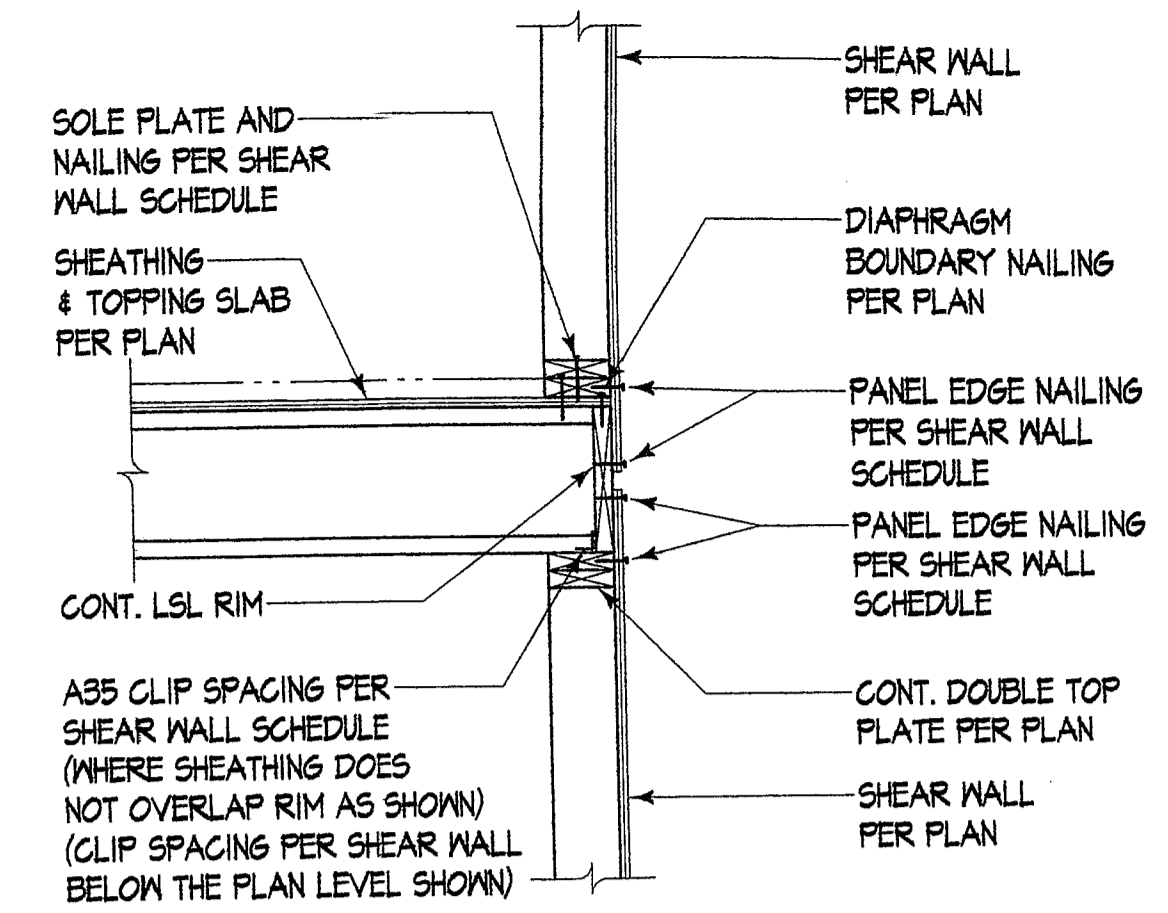
Post Transfer Through Floor



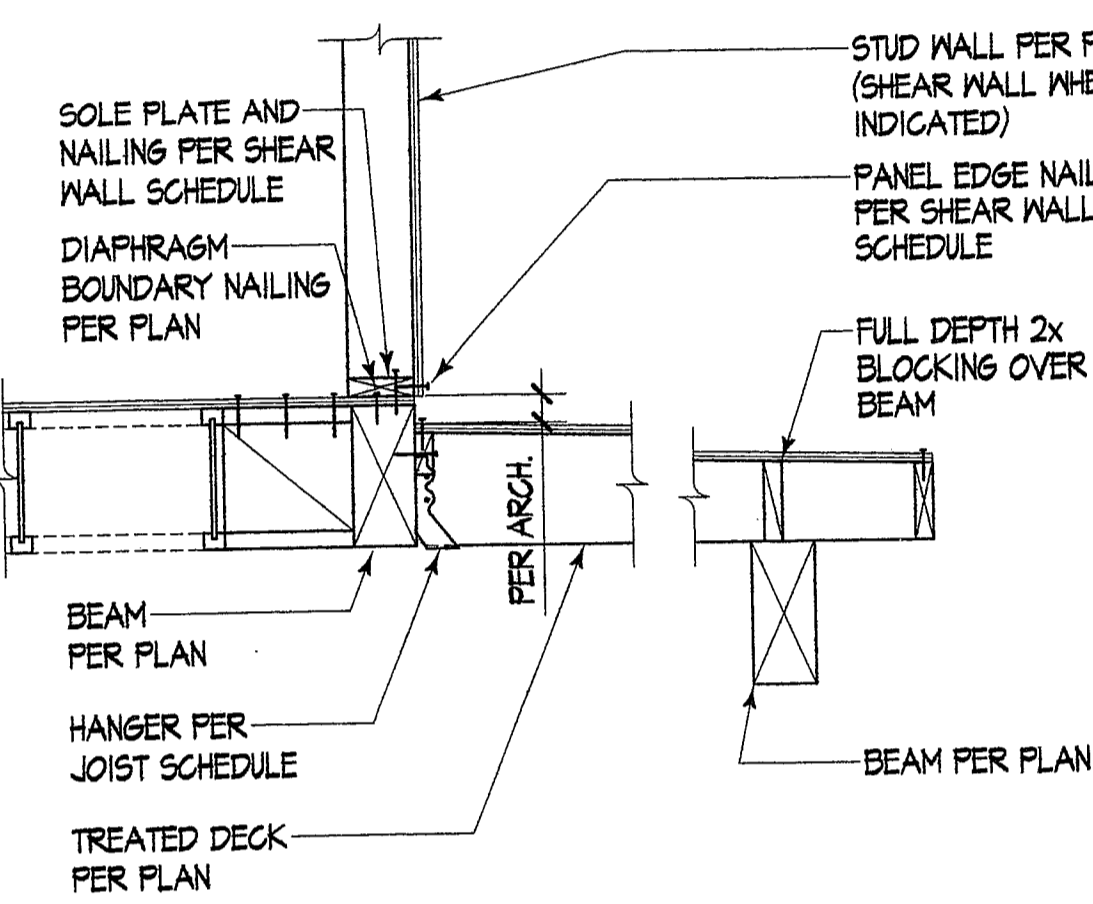
Typical Cantilever Floor



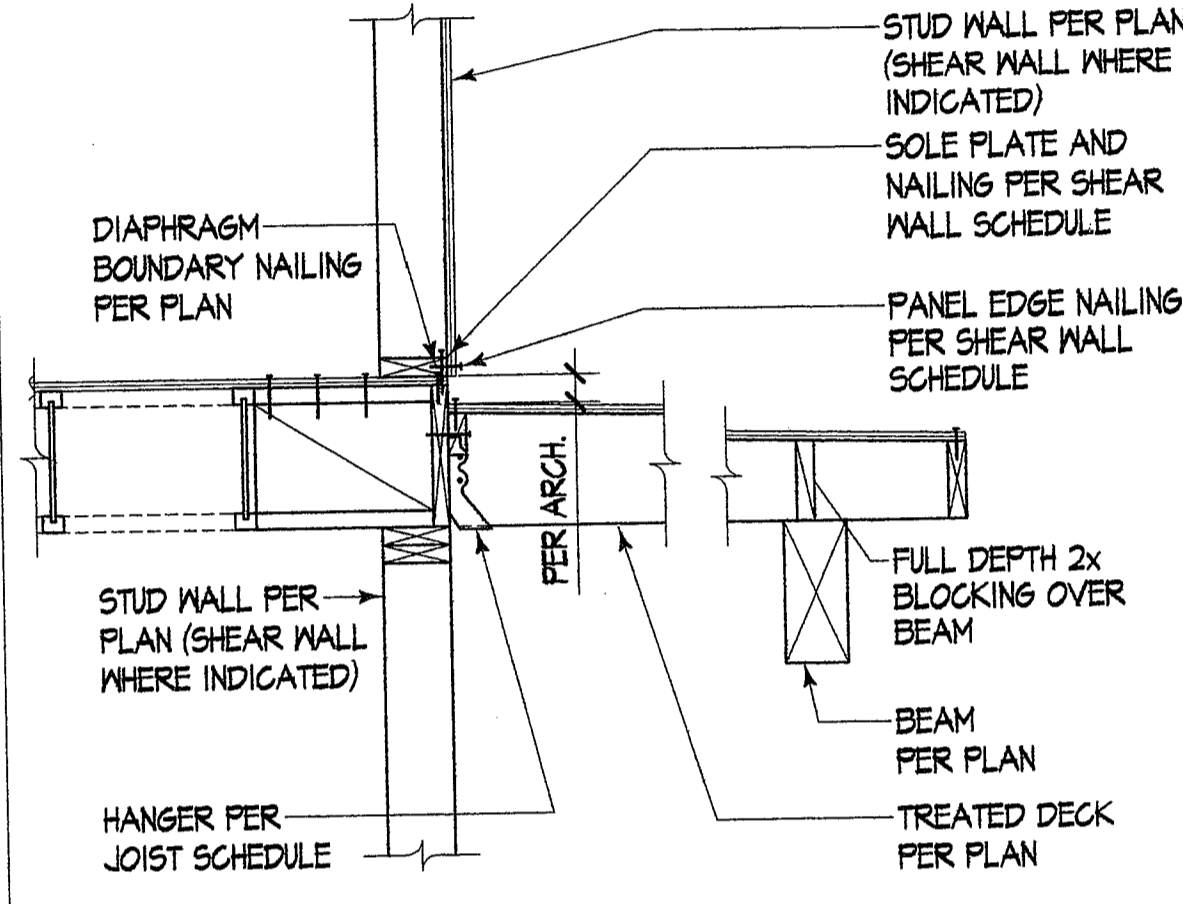
Floor Joist Perp. to Ext. Non-Shear Wall



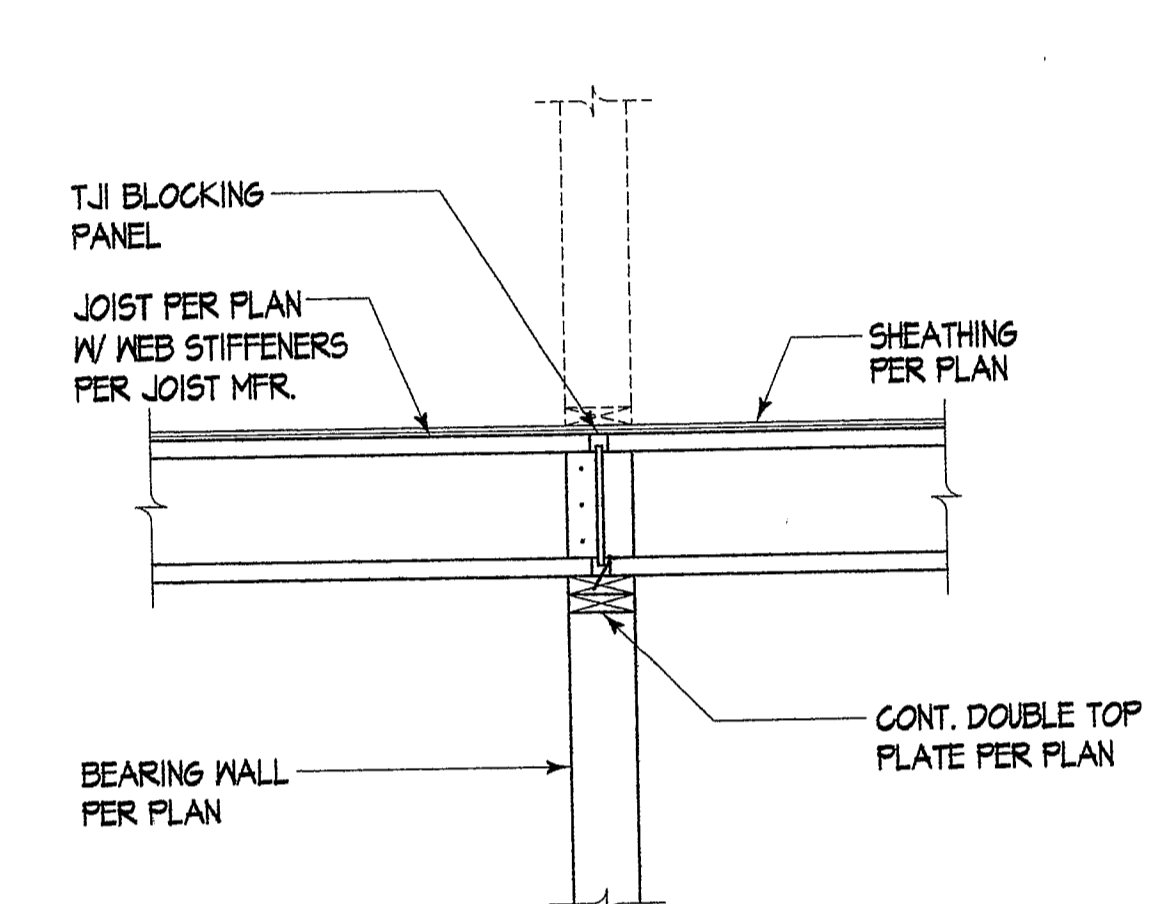
Floor Joist Perp. to Exterior Shear Wall



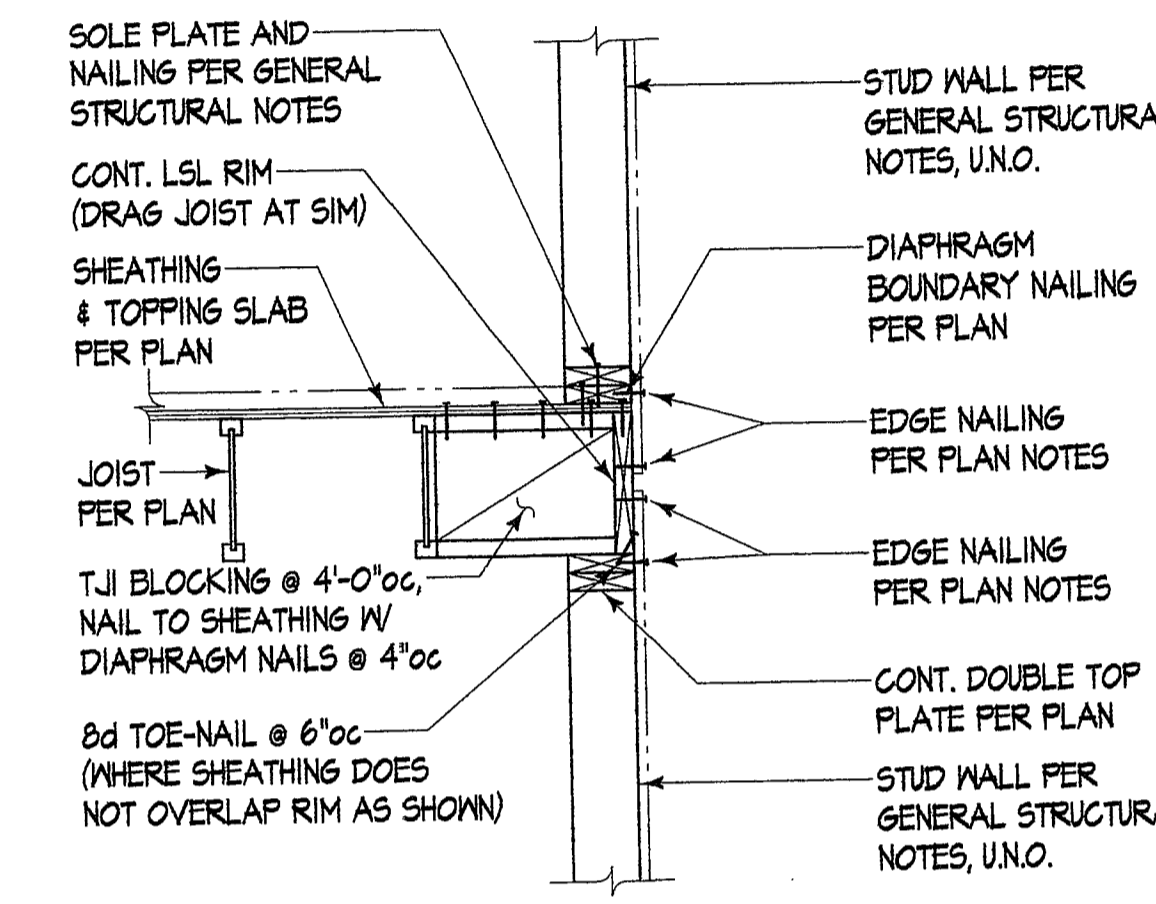
Deck to Beam



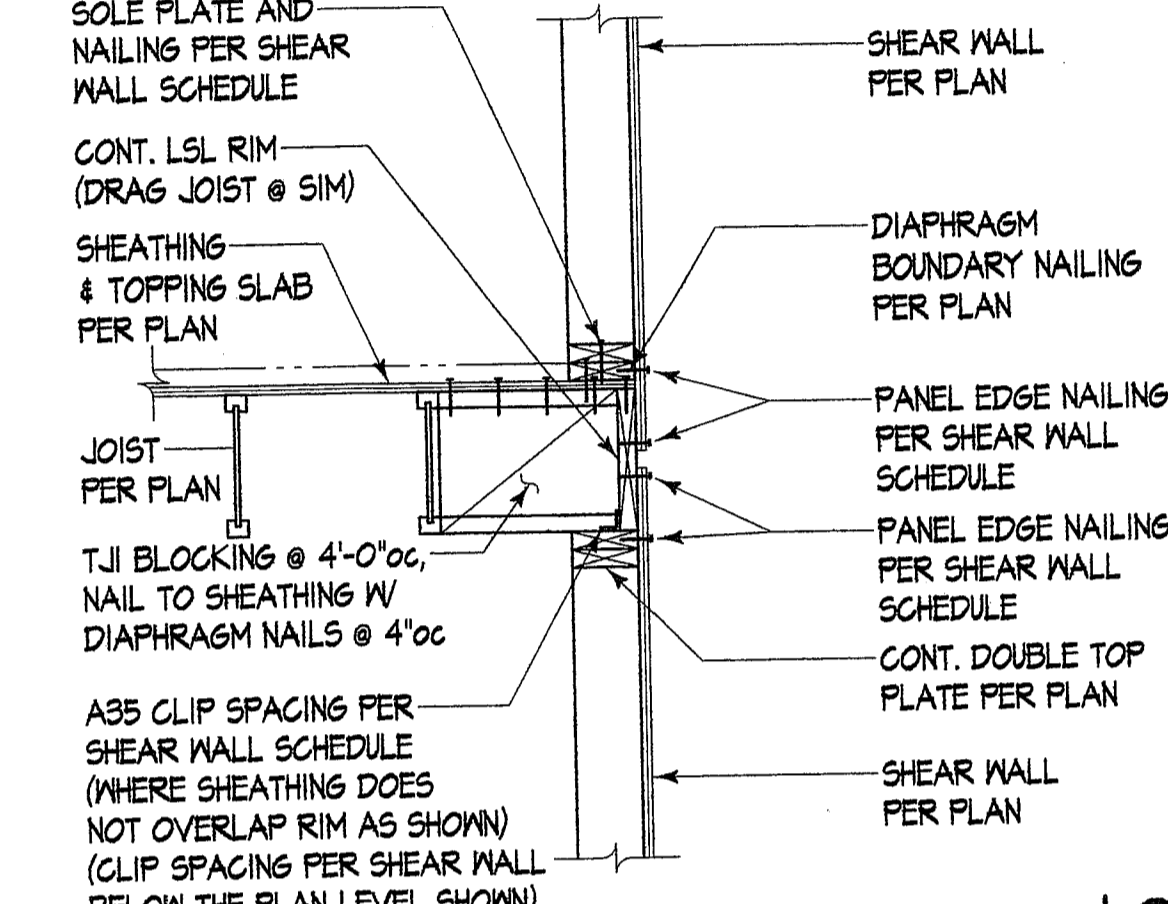
Deck to Rim Board



Cont. Floor Joist at Bearing Wall



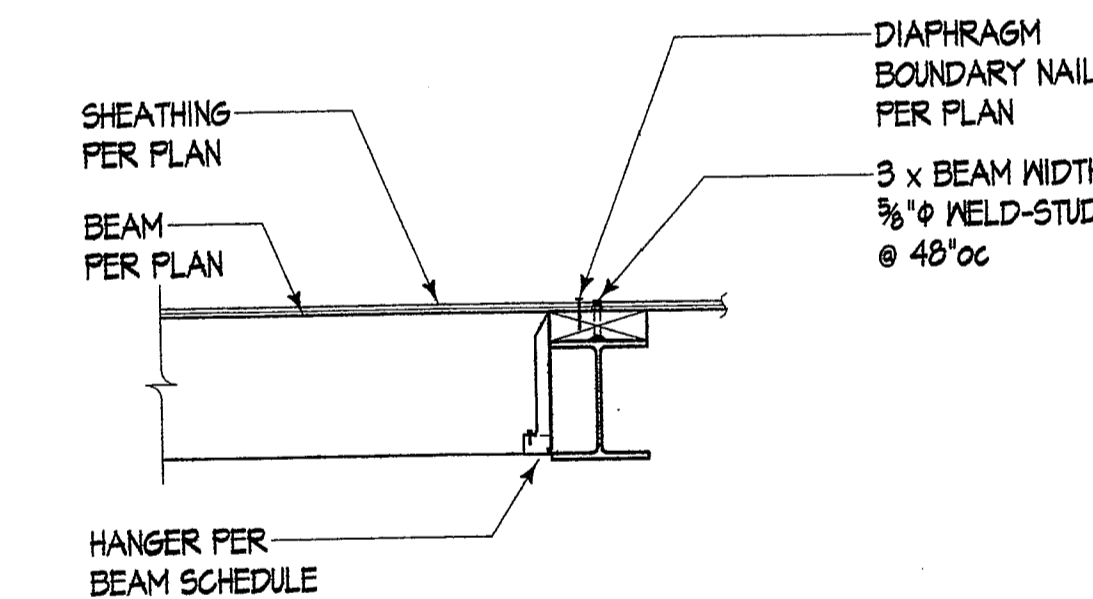
Floor Joist Parallel to Ext. Non-Shear Wall



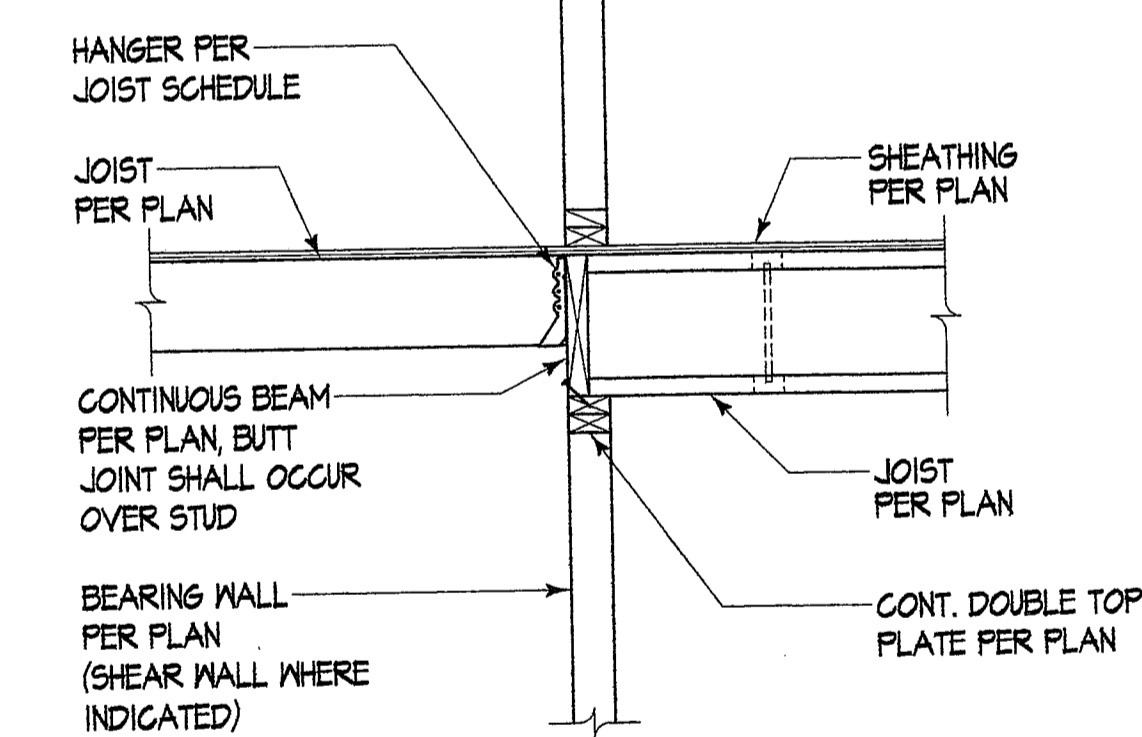
Floor Joist Parallel to Exterior Shear Wall

FOR CALL-OUTS IN COMMON SEE DETAIL 10/S6.1

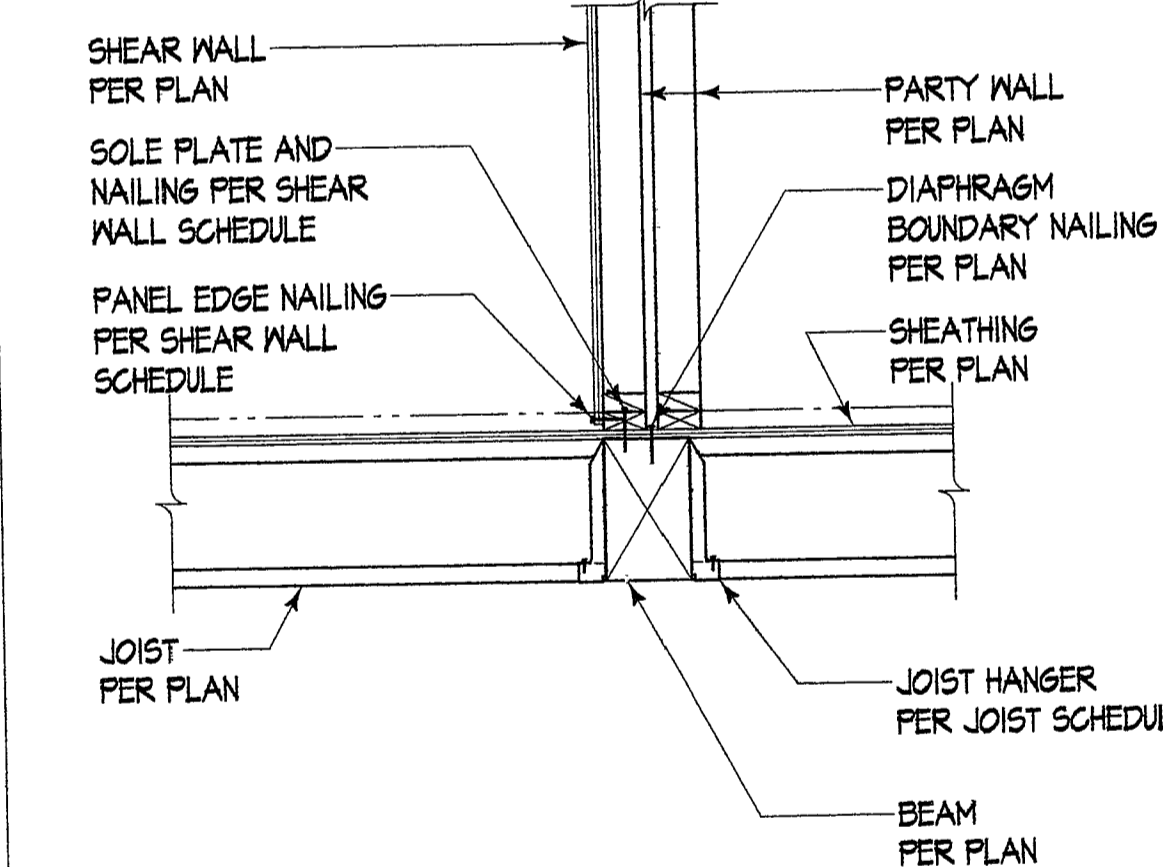
FOR CALL-OUTS IN COMMON SEE DETAIL 10/S6.1



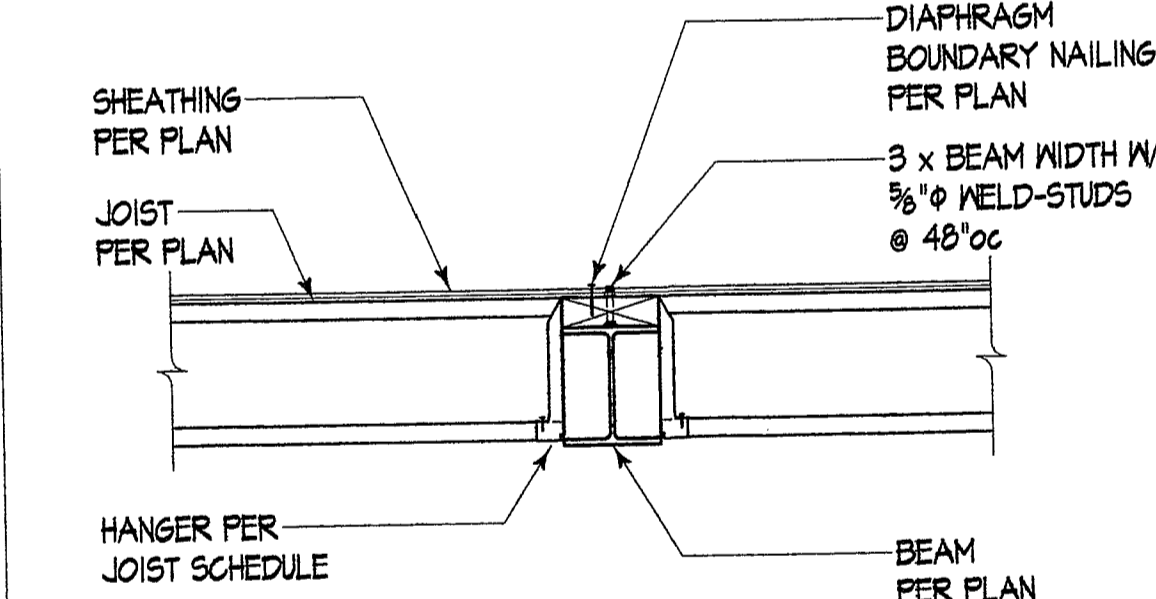
Timber Beam to Steel Beam



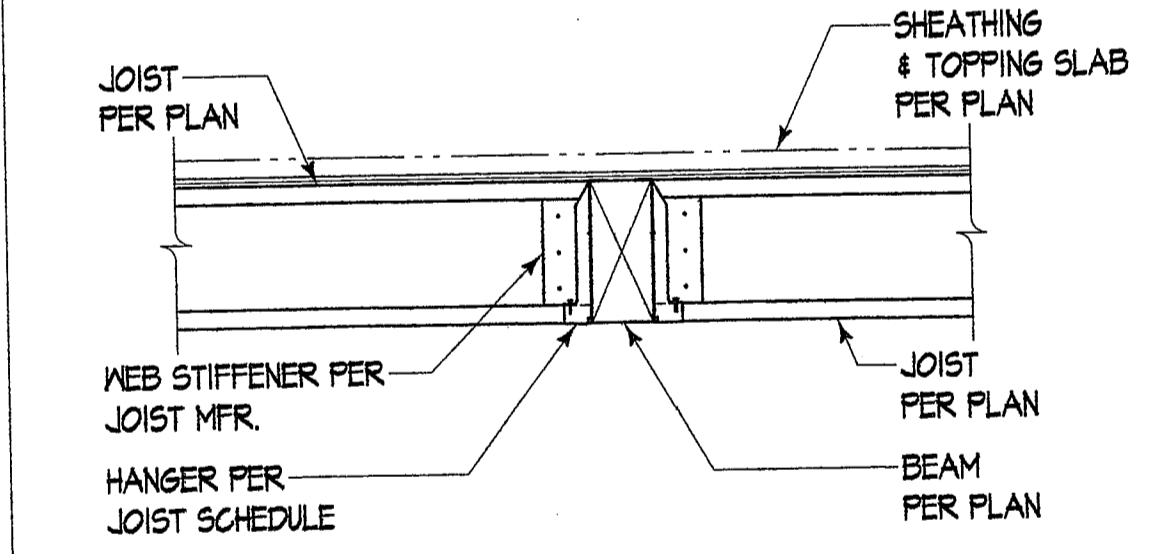
Joist Bearing at Corridor



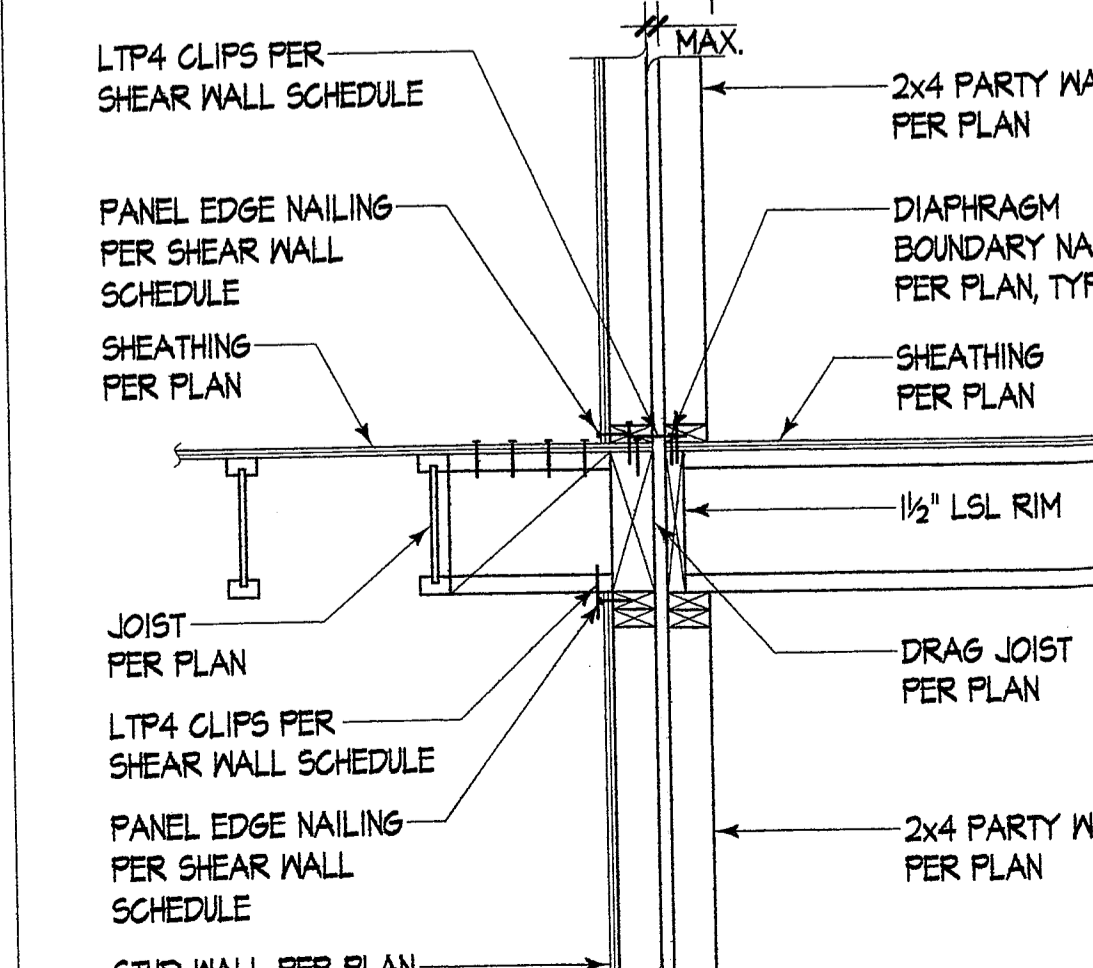
Floor to Parallel Beams - Bldg. 2



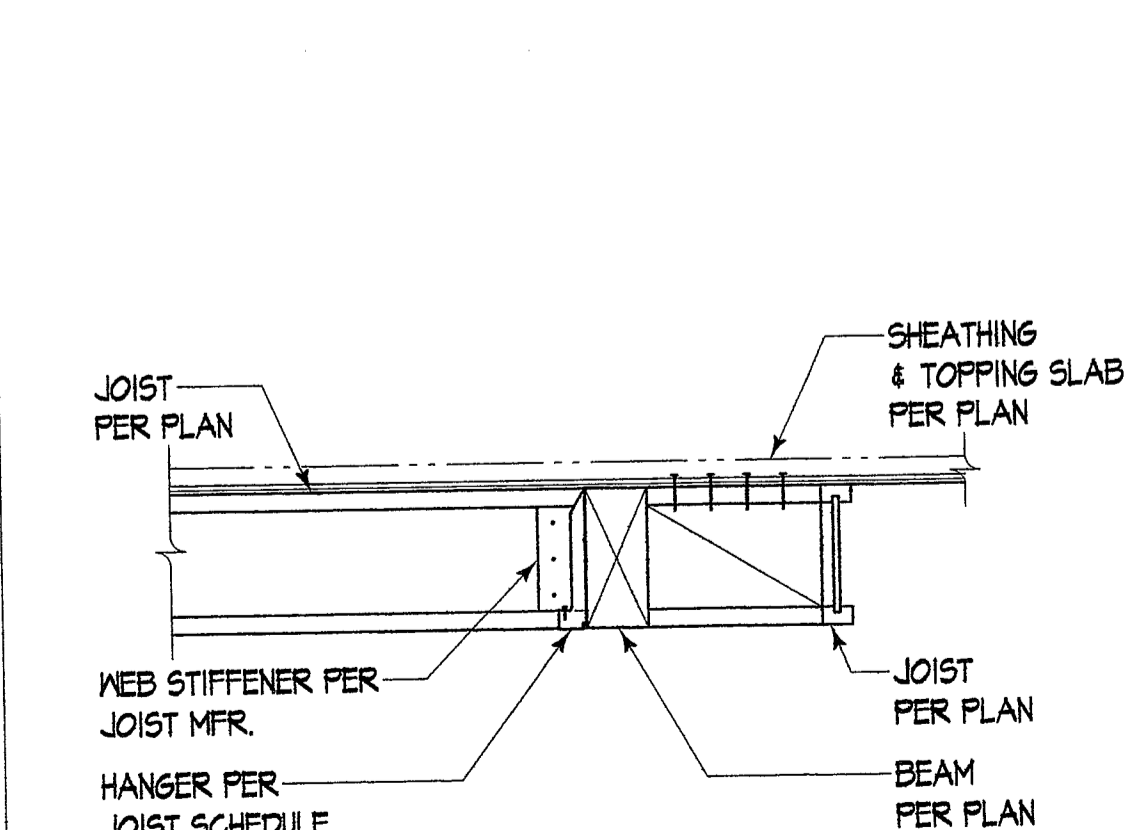
Floor Joist to Steel Beam



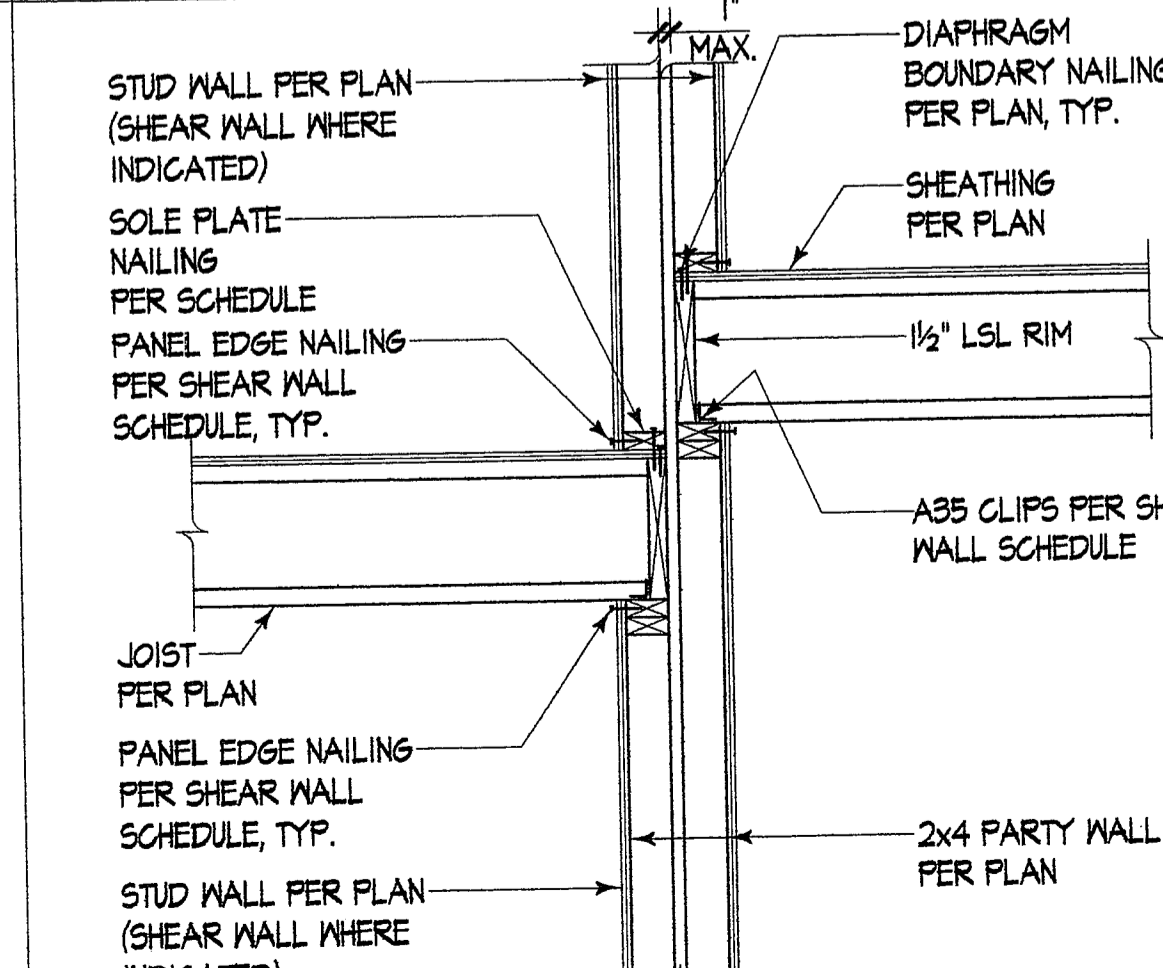
Floor Joist to Beam



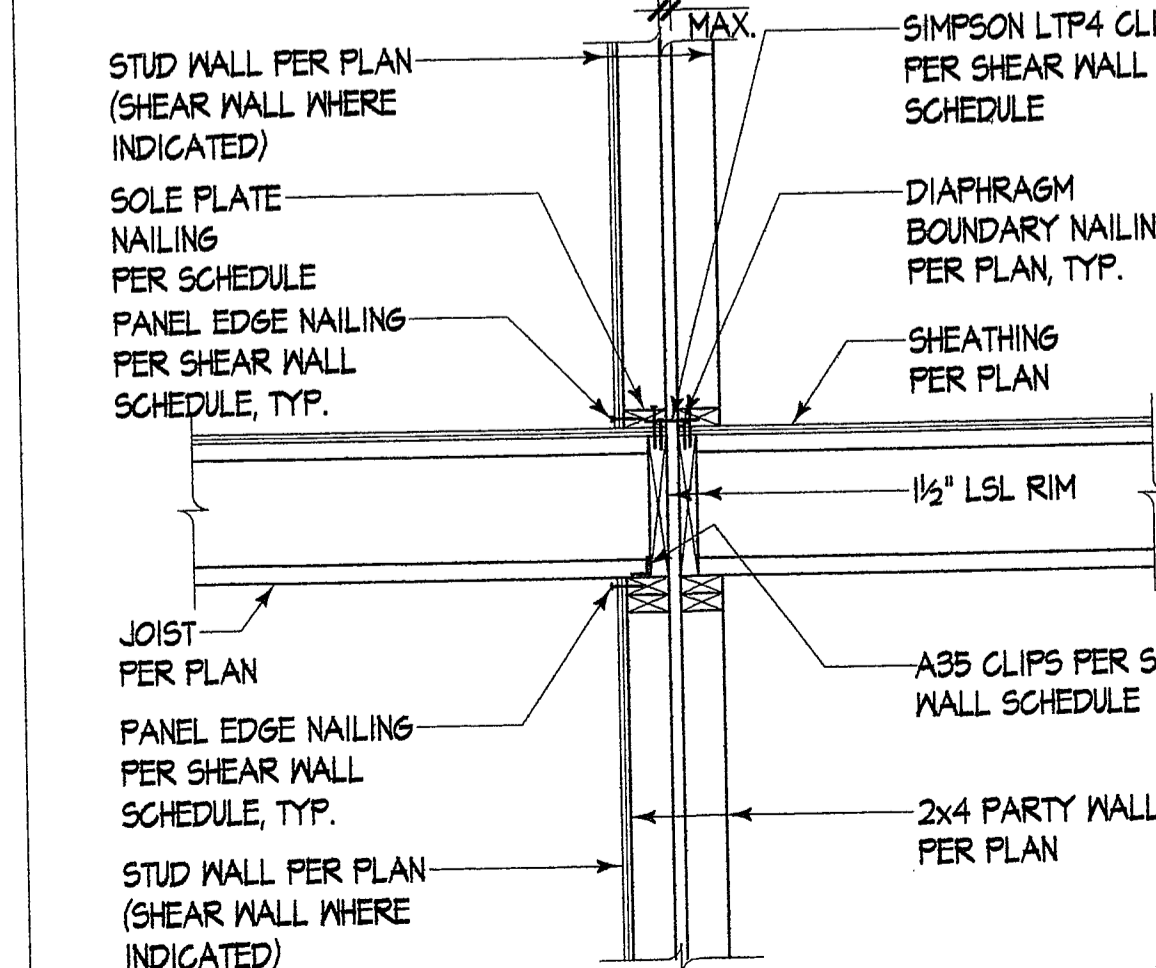
Floor Joist to Party Wall



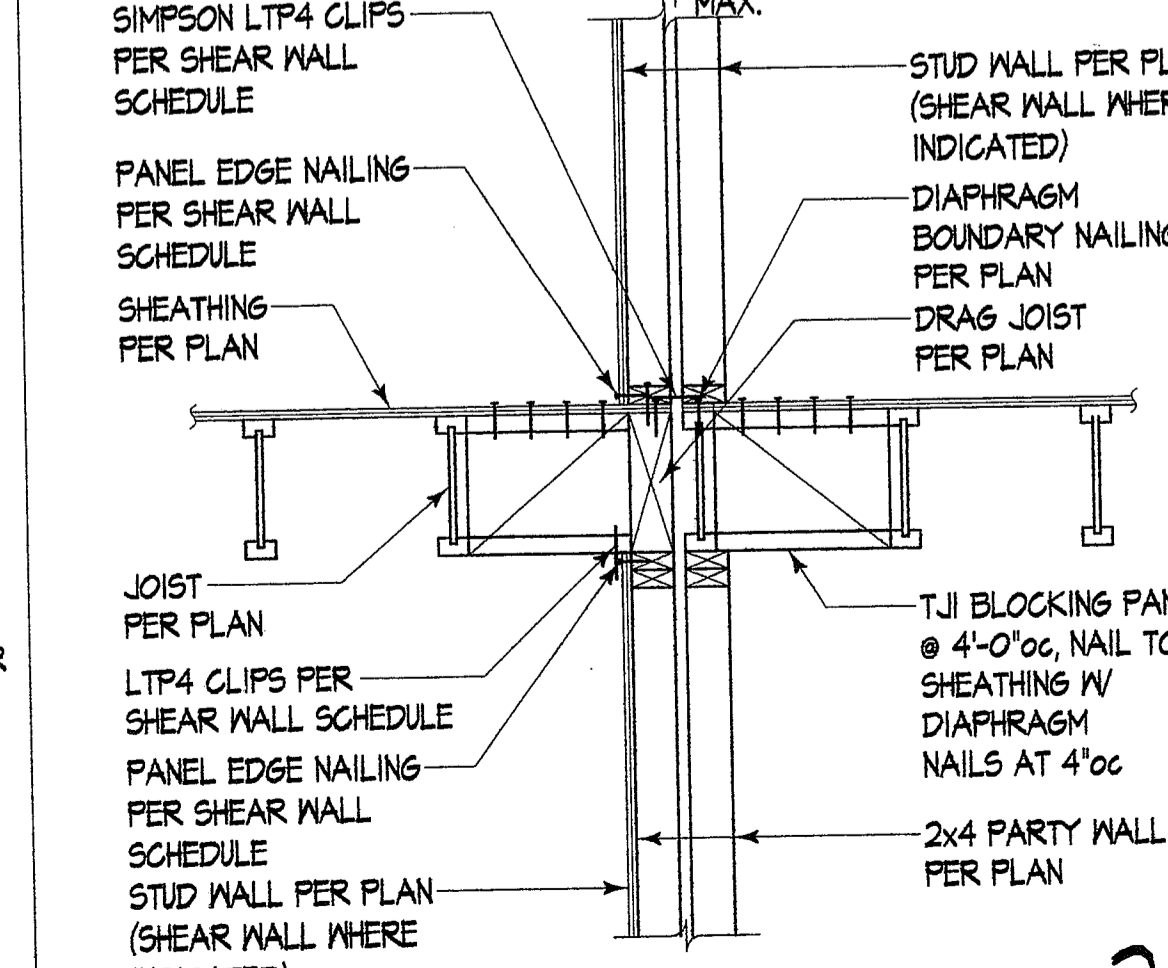
Floor Joist to Beam



Floor Joists Perpendicular to Party Wall



Floor Joists Perpendicular to Party Wall



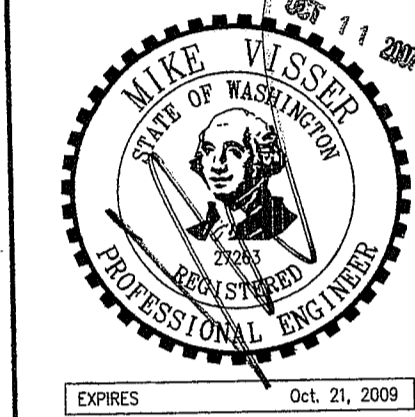
Party Wall Shear Wall to Floor

**NASON ASSOCIATES**  
**JOHN G. NASON**  
 ARCHITECT  
 14405 S.E. 266th ST.  
 KENT, WASHINGTON  
 98042  
 (253) 631-0294

**COPYRIGHT NOTICE**  
 THIS PLAN IS ISSUED FOR SINGLE USE PURPOSES BY THE CLIENT INDICATED. REPRODUCTION OR USE OF THIS DOCUMENT WITHOUT THE EXPRESS WRITTEN CONSENT OF ARCHITECT, JOHN G. NASON, IS PROHIBITED. ARCHITECT MAINTAINS ALL RIGHTS UNDER STATE AND FEDERAL LAW, INCLUDING COPYRIGHT.

**LIABILITY LIMIT NOTICE**  
 NOTICE: DRAWING PACKAGE PREPARED FOR PERMITTING REVIEW ONLY. ARCHITECT NOT RESPONSIBLE FOR CONSTRUCTION COMPLIANCE UNLESS RETAINED FOR FULL INSPECTION SERVICES.

**NOTICE TO CONTRACTOR**  
 CONTRACTOR SHALL VERIFY ALL CONDITIONS AND DIMENSIONS AT THE JOB SITE AND NOTIFY ARCHITECT OF ANY DIMENSIONAL ERRORS, OMISSIONS OR DISCREPANCIES BEFORE BEGINNING OR FABRICATING ANY WORK. DO NOT SCALE DRAWINGS.

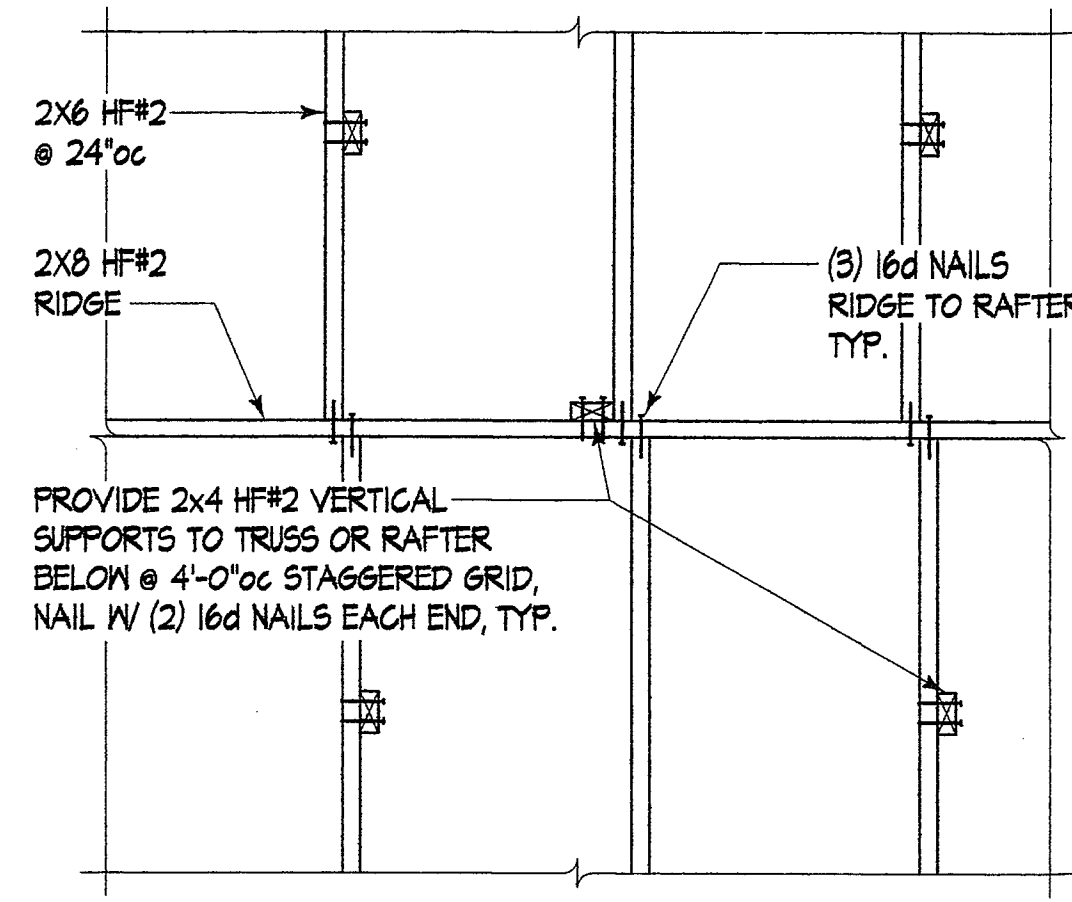


**VISSER ENGINEERING**  
 3455 SOUTH 344th WAY  
 SUITE 230  
 FEDERAL WAY, WA 98001  
 VOICE: (253) 835-0810  
 FAX: (253) 835-0813

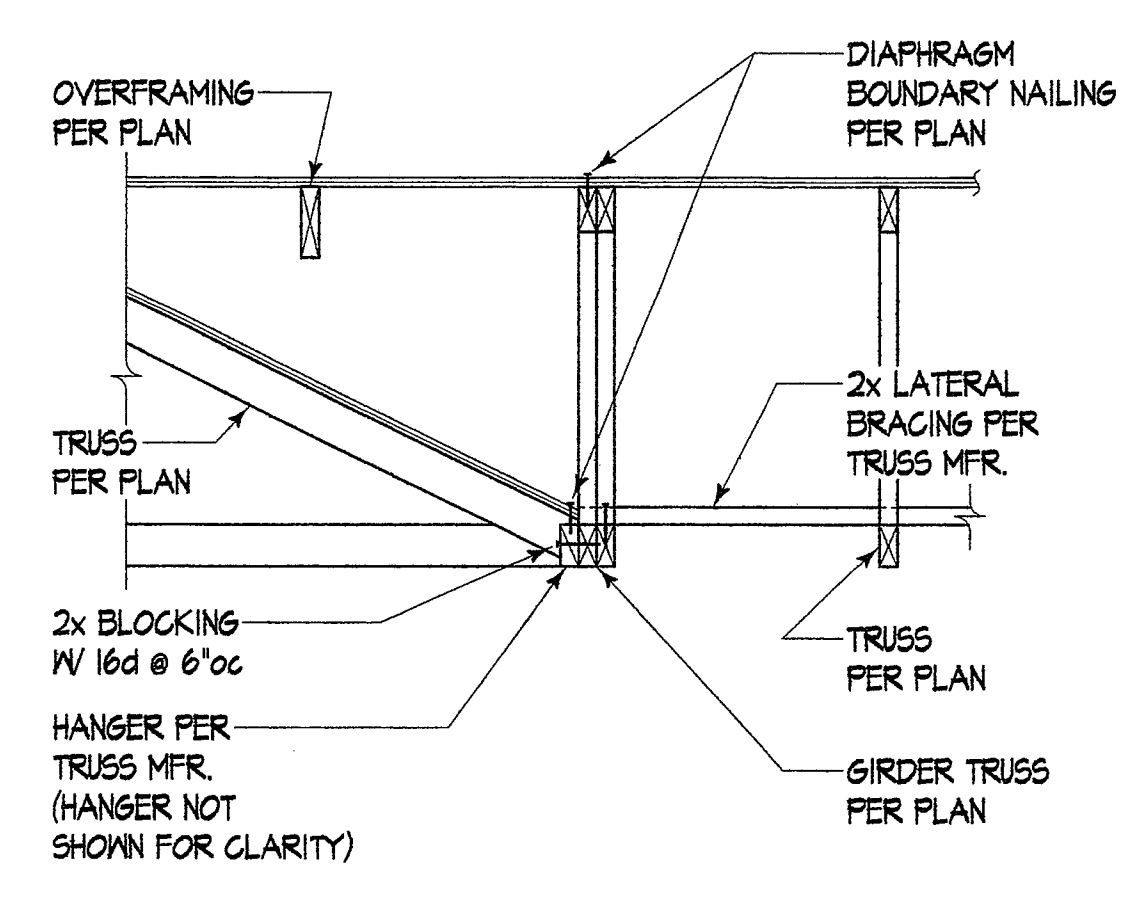
**AZURE RIDGE APT'S.**  
 AN APARTMENT COMMUNITY KING COUNTY, WA  
 FOR: GCG INVESTMENTS (Mr. Glenn Gonzales)  
 23414 SE 251st. PLACE  
 MAPLE VALLEY, WA 98038  
 206-313-0190

**TYPICAL TIMBER FRAMING DETAILS**  
 PROJECT NO. : 07-134  
 DRAWN : WSW / TVJ  
 DESIGN : BJS  
 CHECKED : MDV  
 ISSUE DATE : 10/12/07  
 LATEST REV. : .

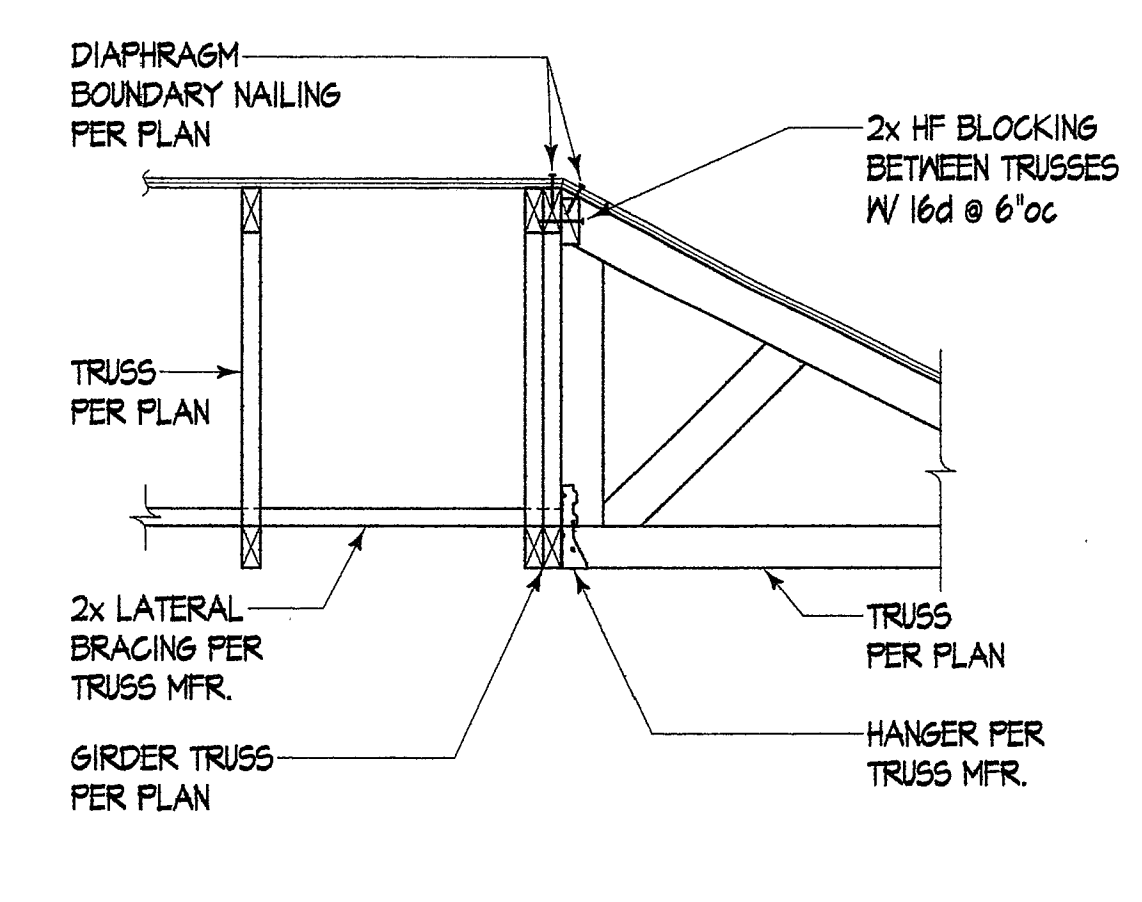
**S6.1**



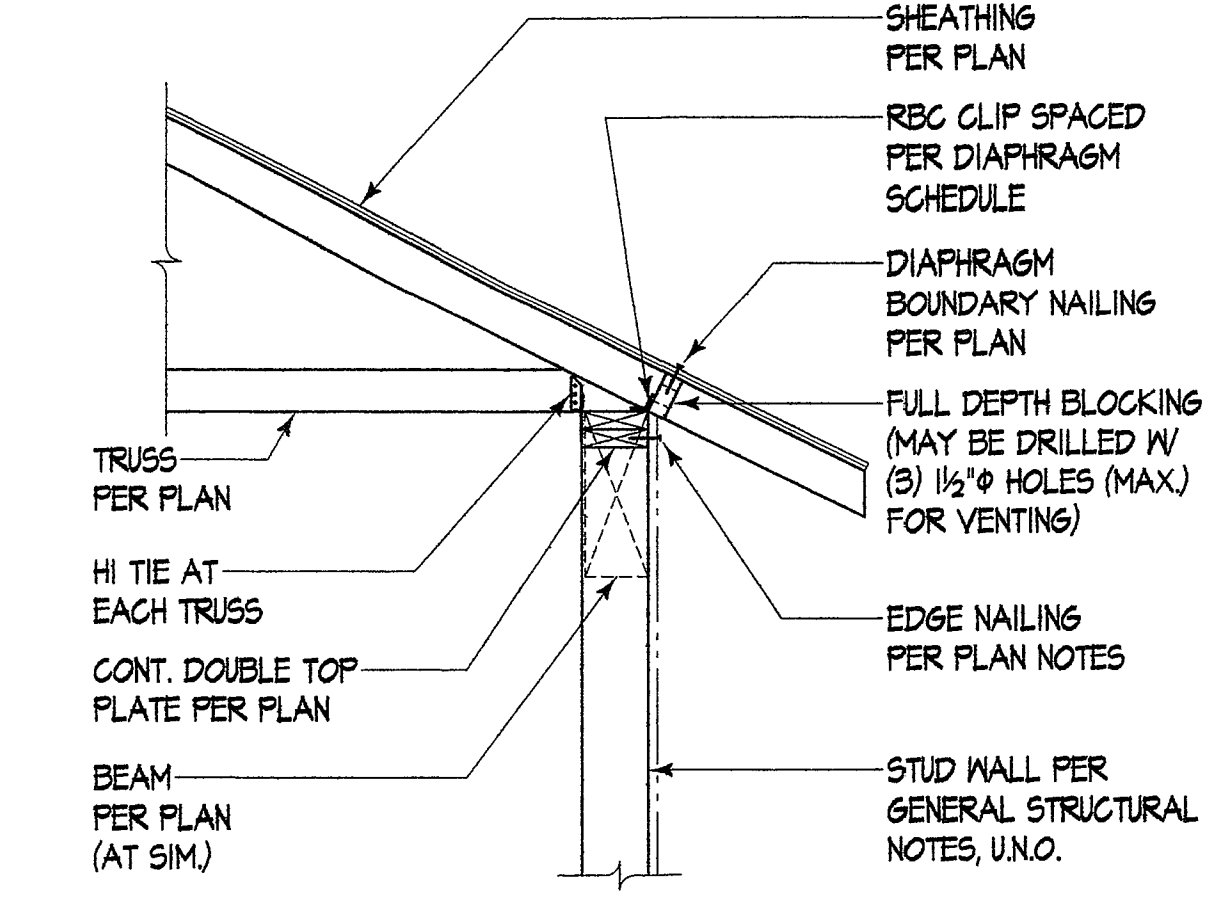
Typical Overframing 1



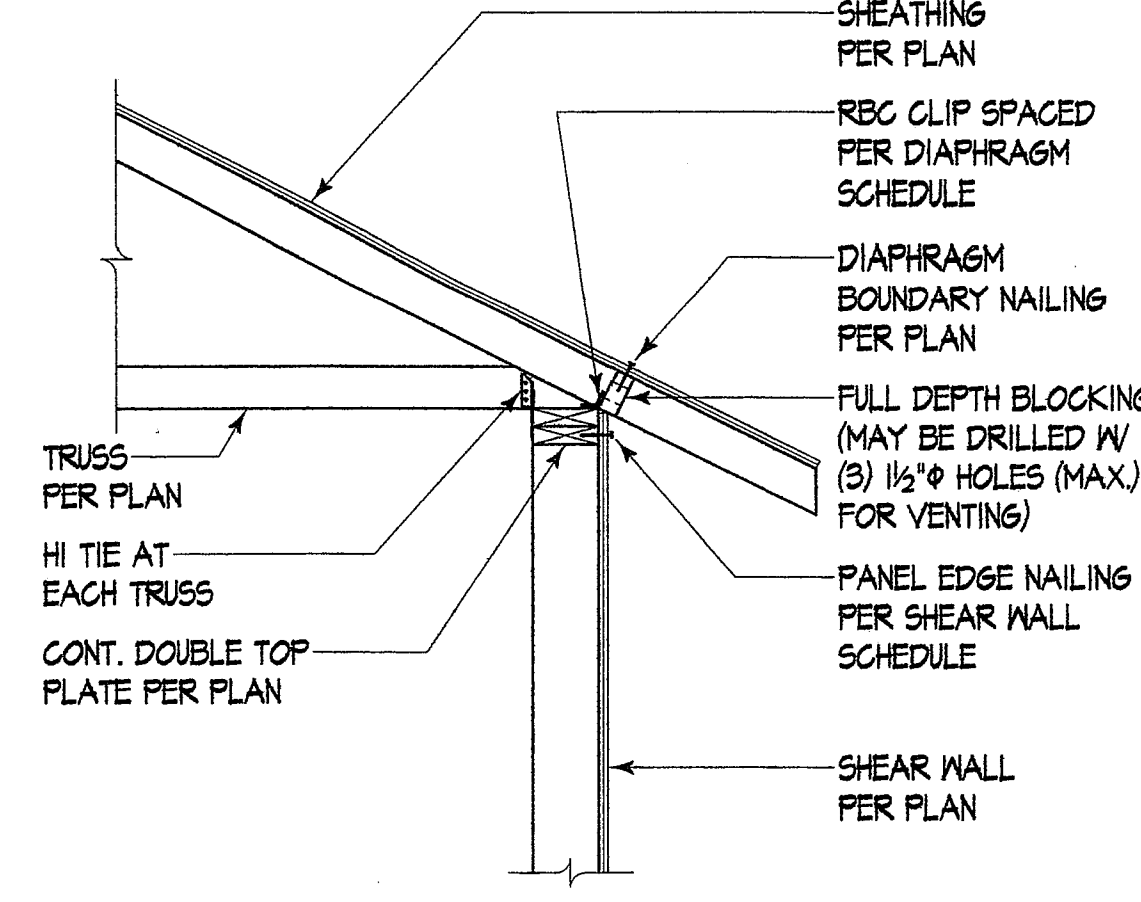
Truss Perp. to Girder Truss 2



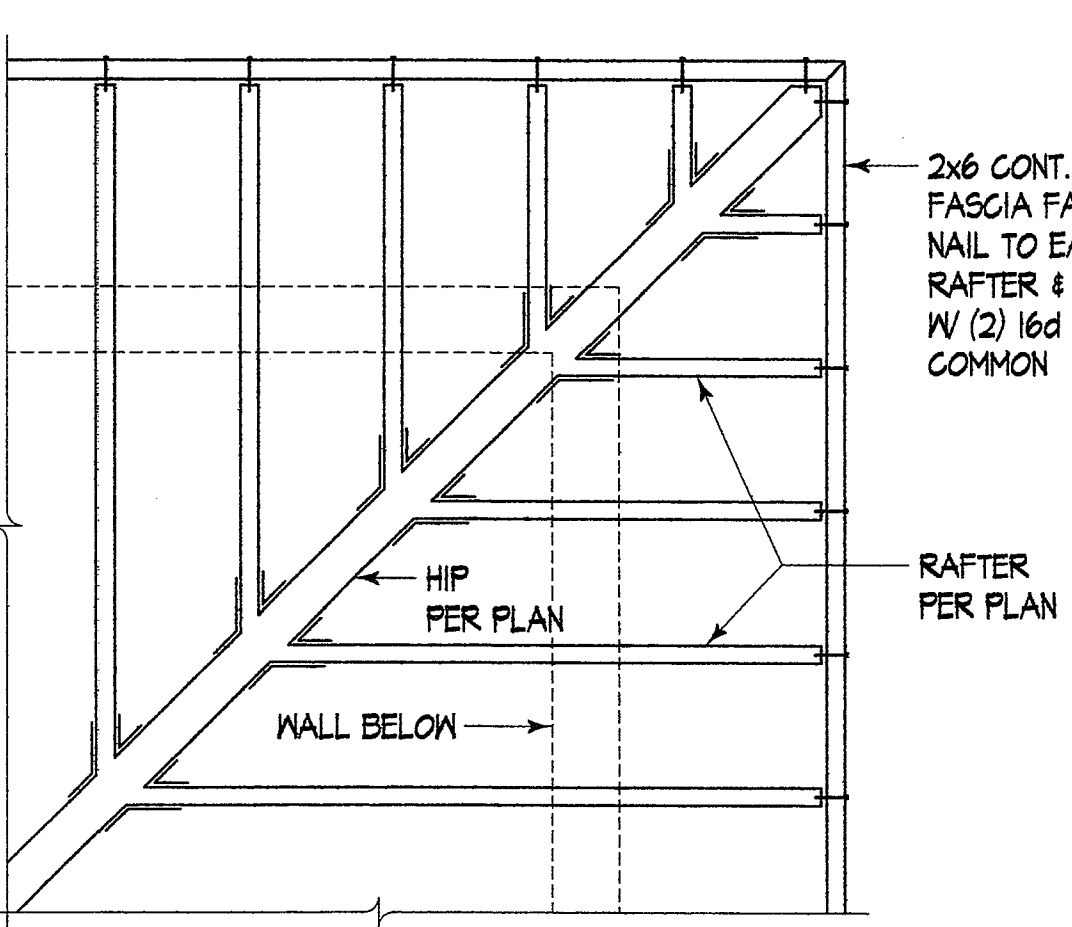
Truss Perp. to Girder Truss 3



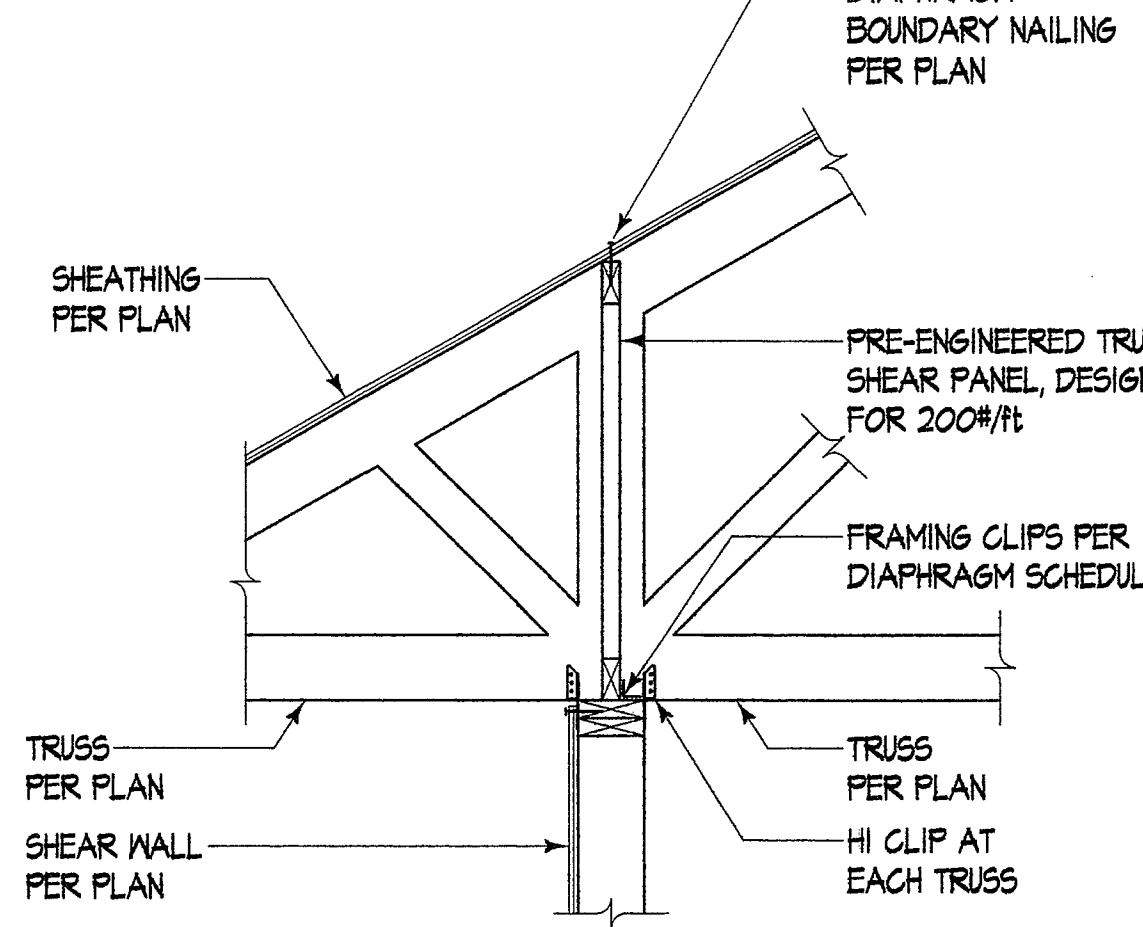
Truss to Ext. Non-Shear Wall 4



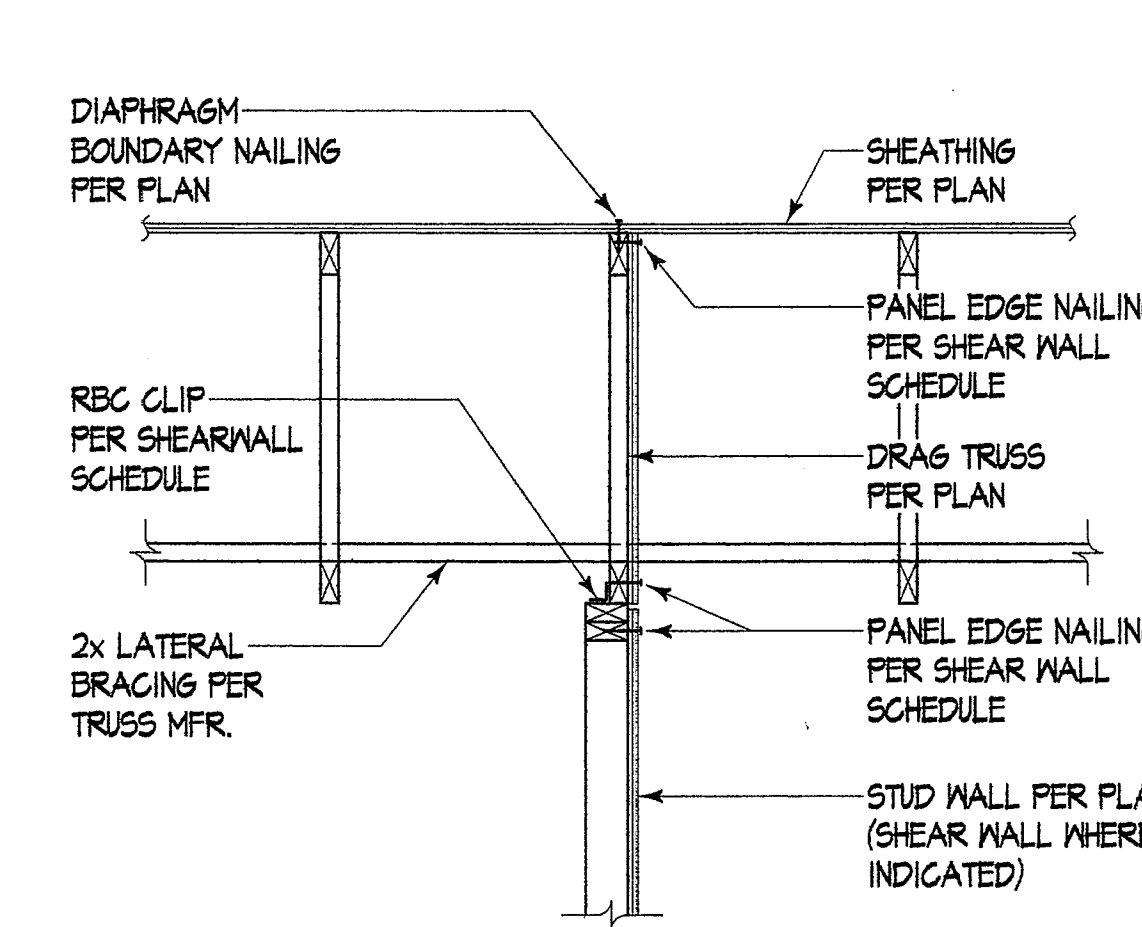
Typical Truss to Exterior Shear Wall 5



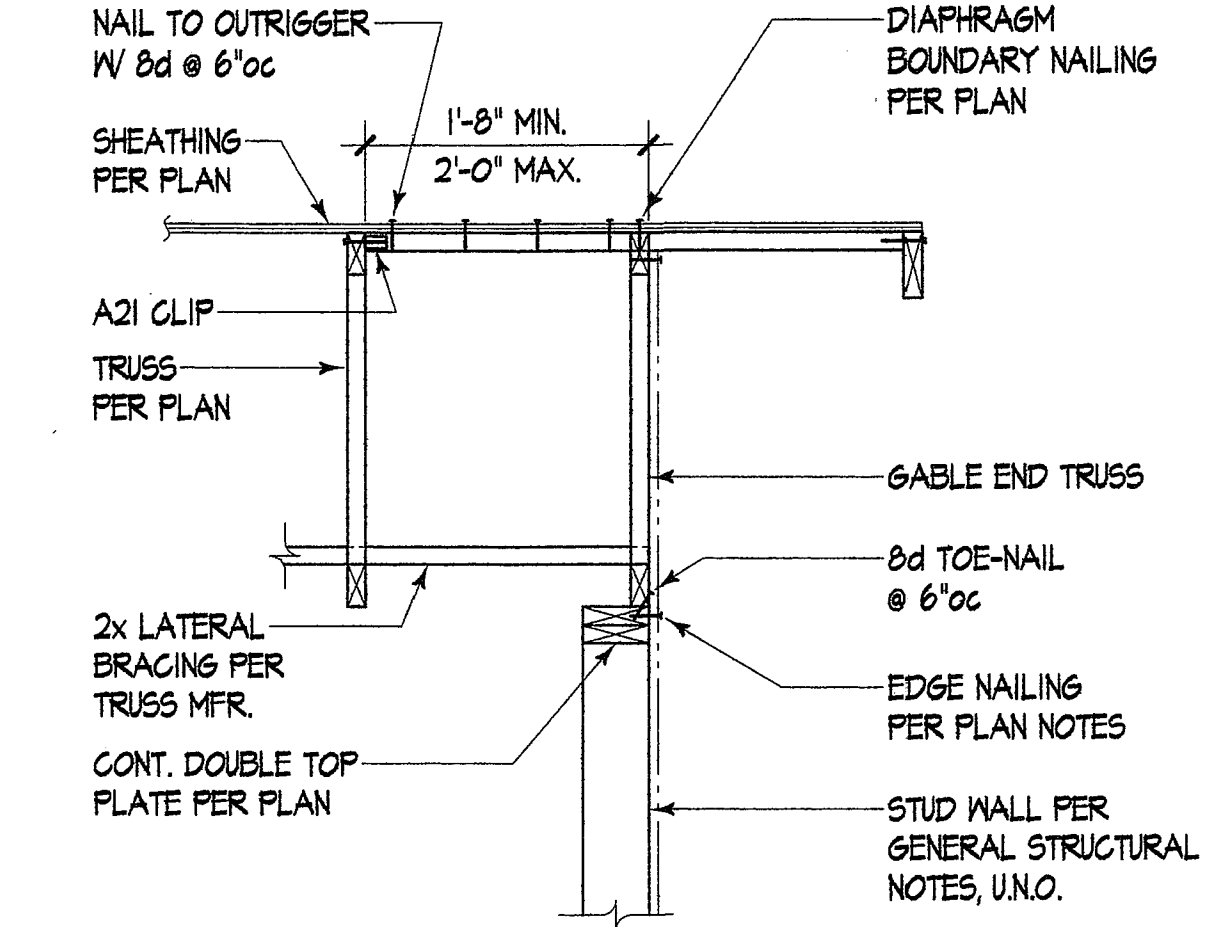
Typical Hip Roof Framing 6



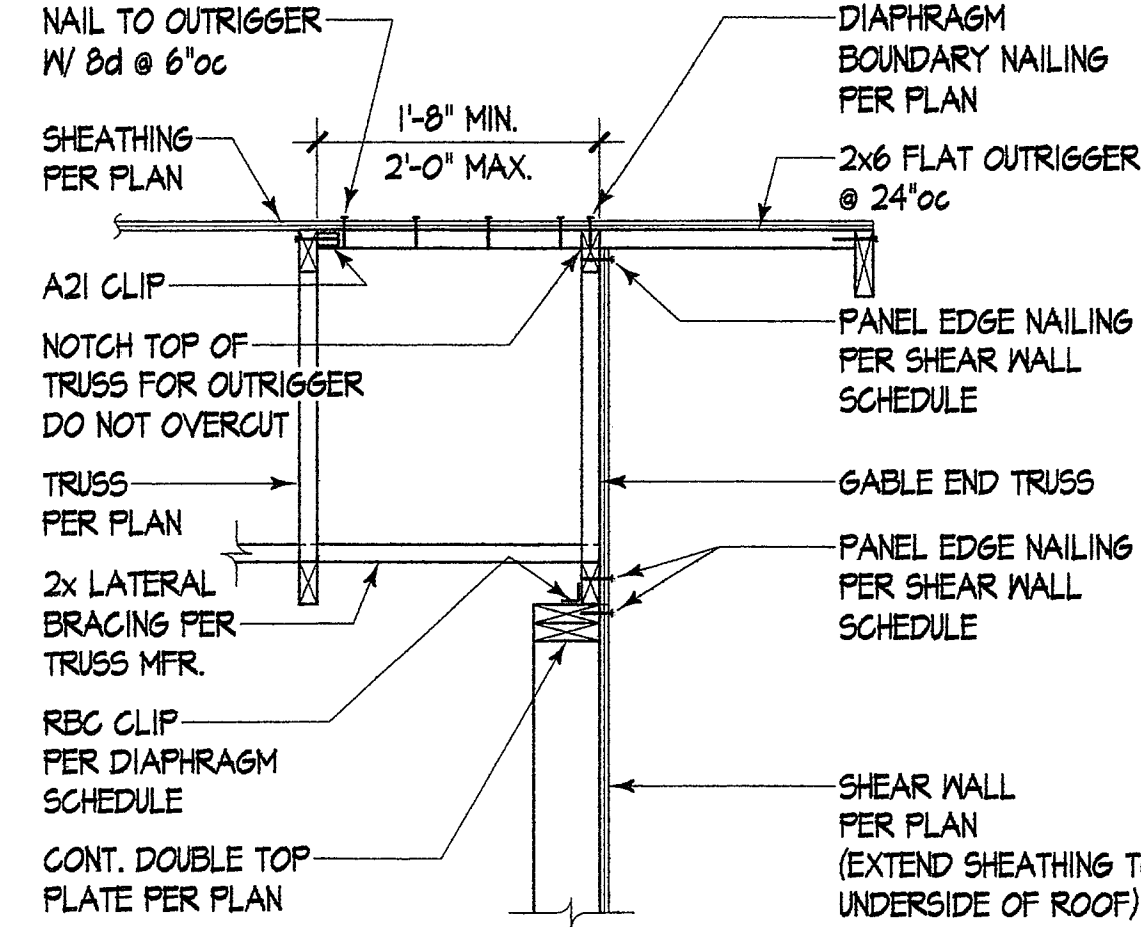
Truss to Interior Bearing Wall 7



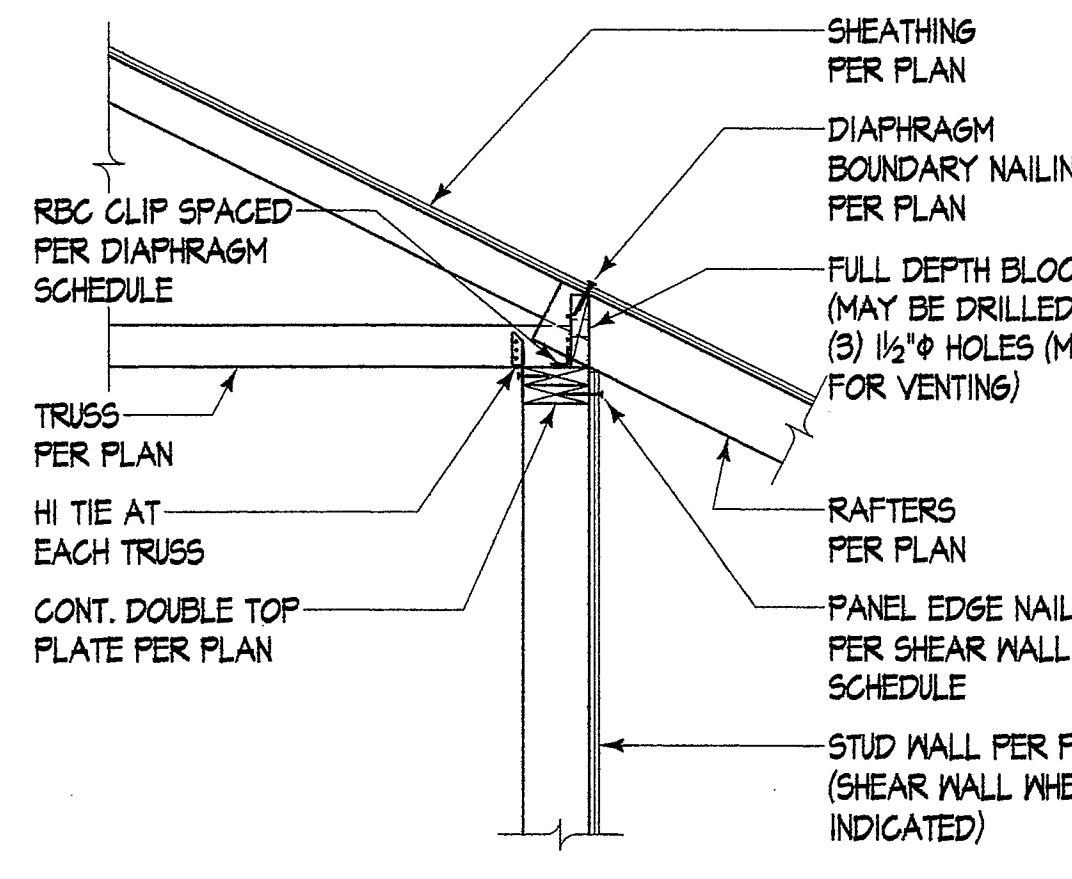
Shear Wall to Drag Truss 8



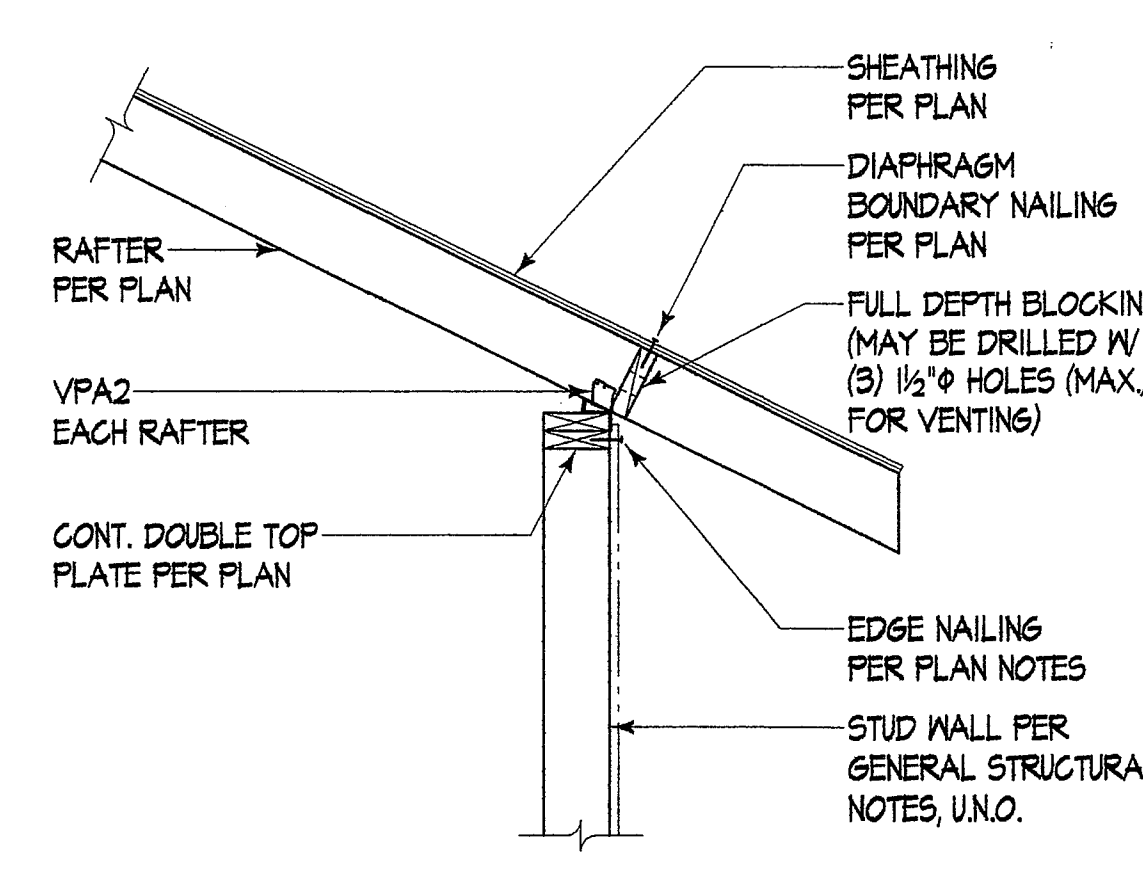
Gable End Truss at Ext. Non-Shear Wall 9



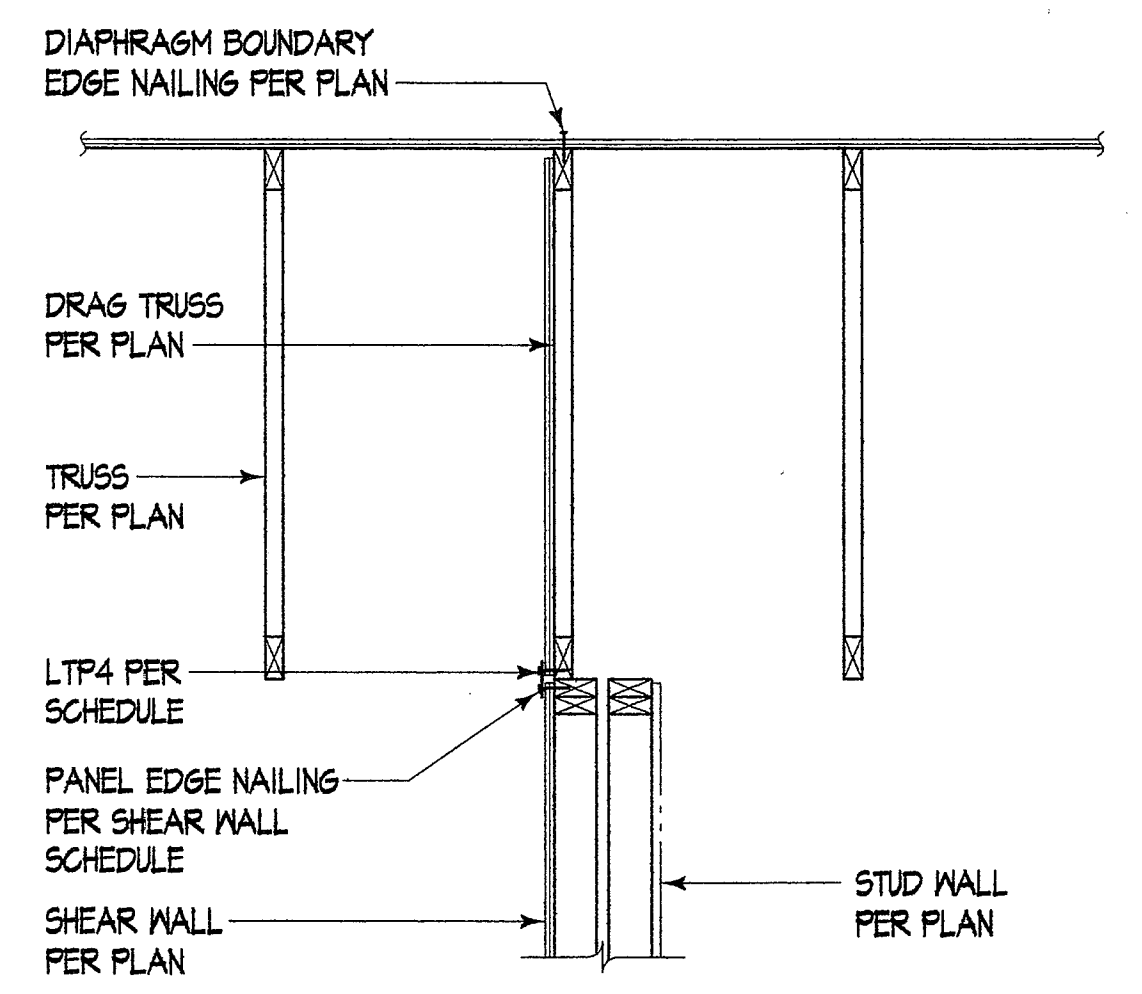
Gable End Truss to Exterior Shear Wall 10



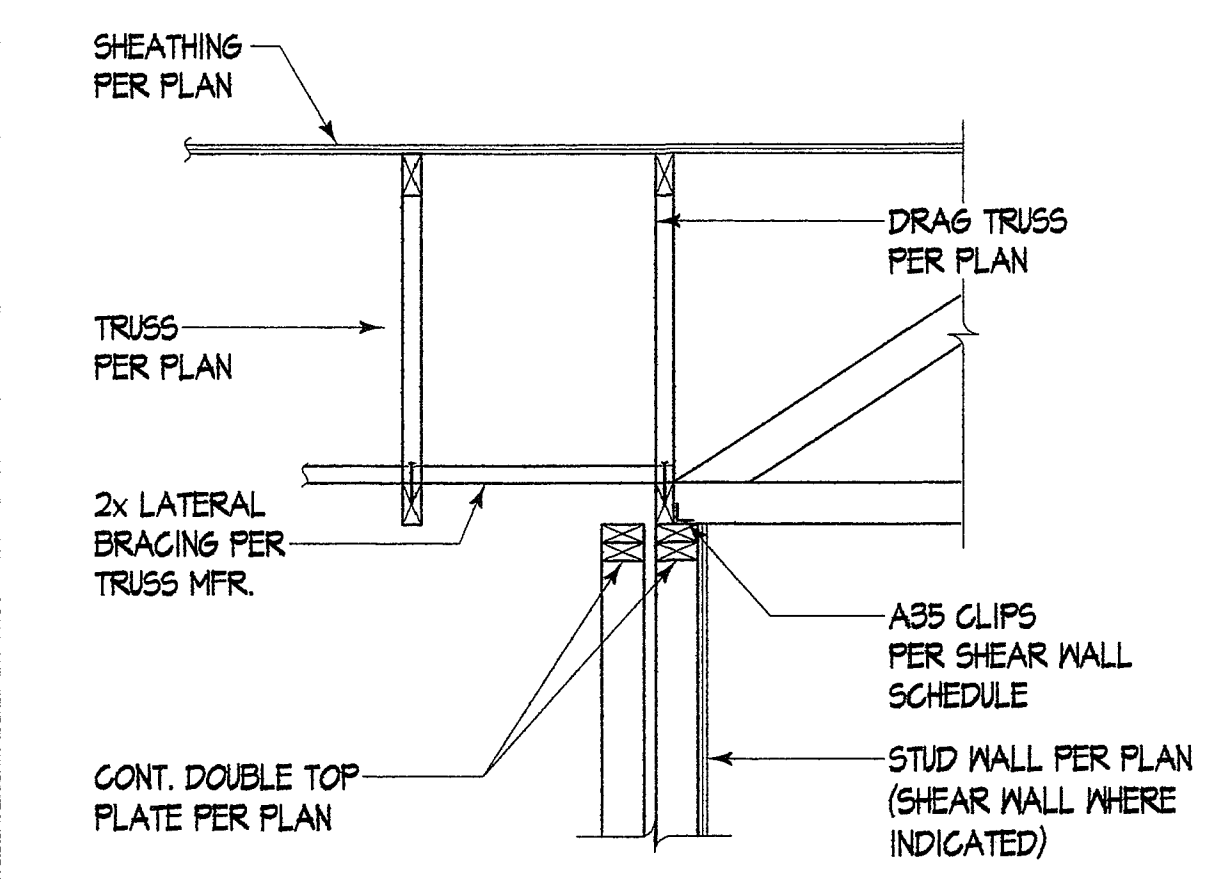
Rafter to Truss at Bearing Wall 11



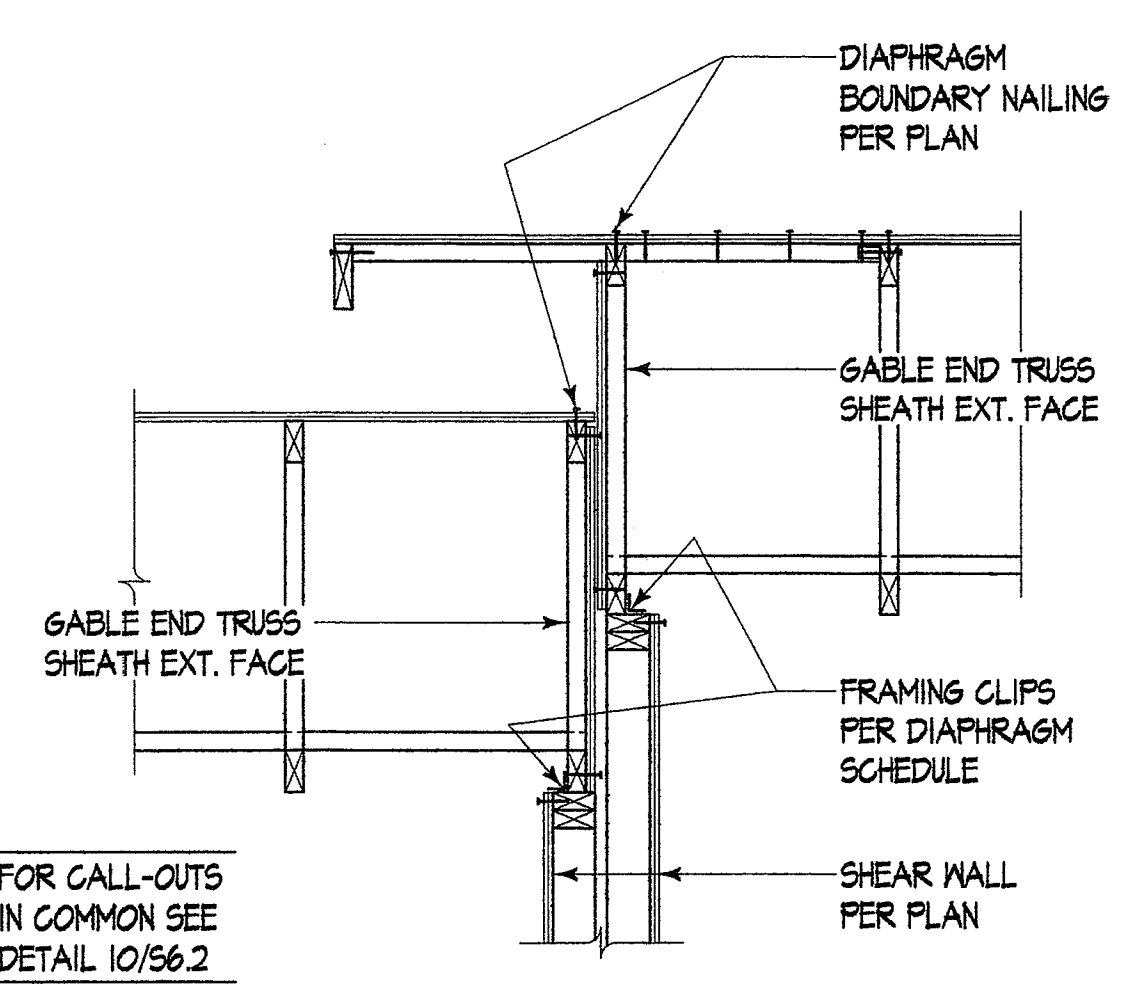
Rafter to Ext. Non-Shear Wall 12



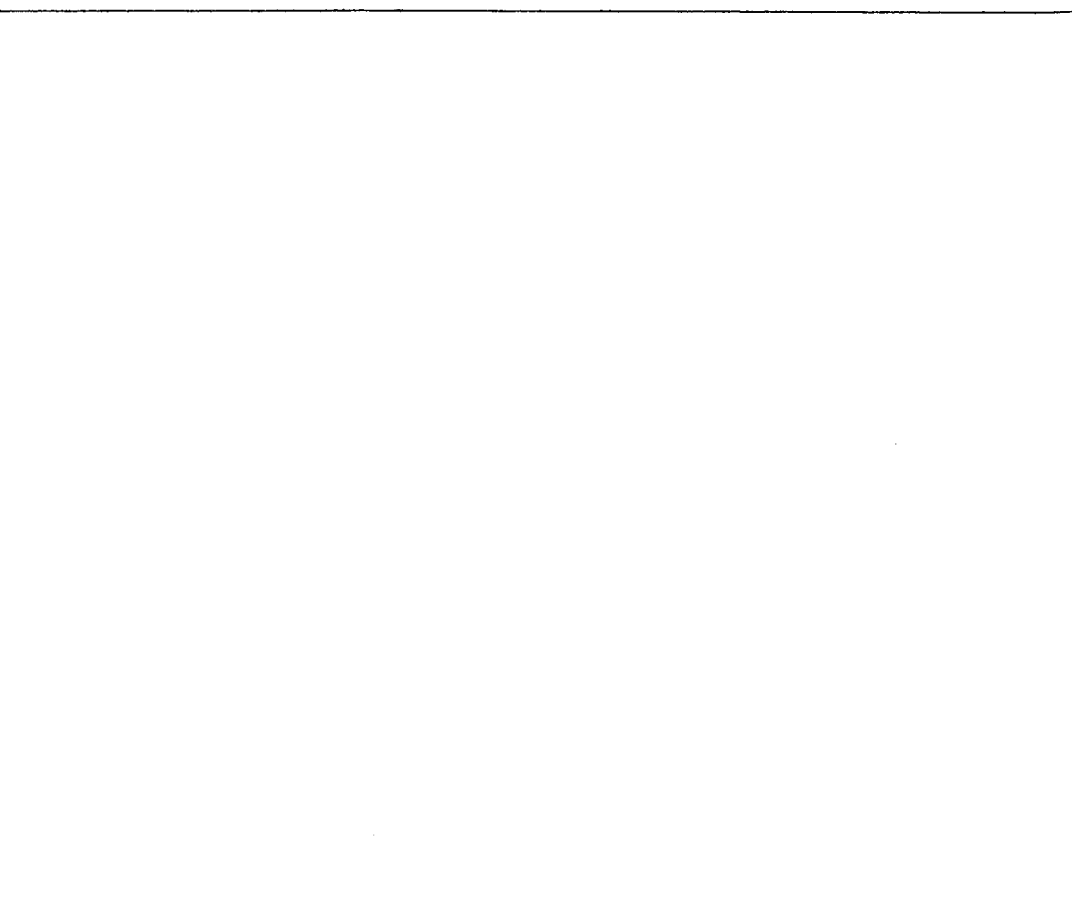
Drag Truss to Party Wall 13



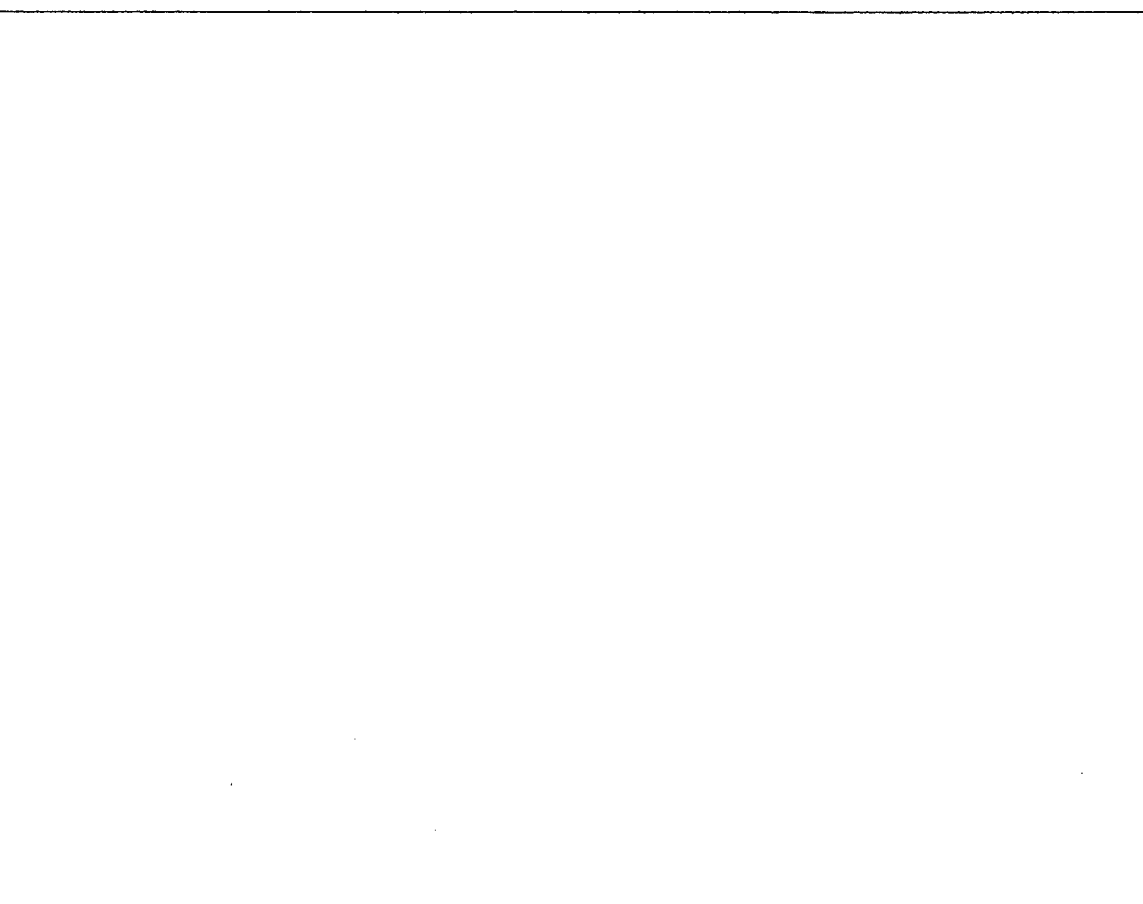
Typical Truss at Party Wall 14



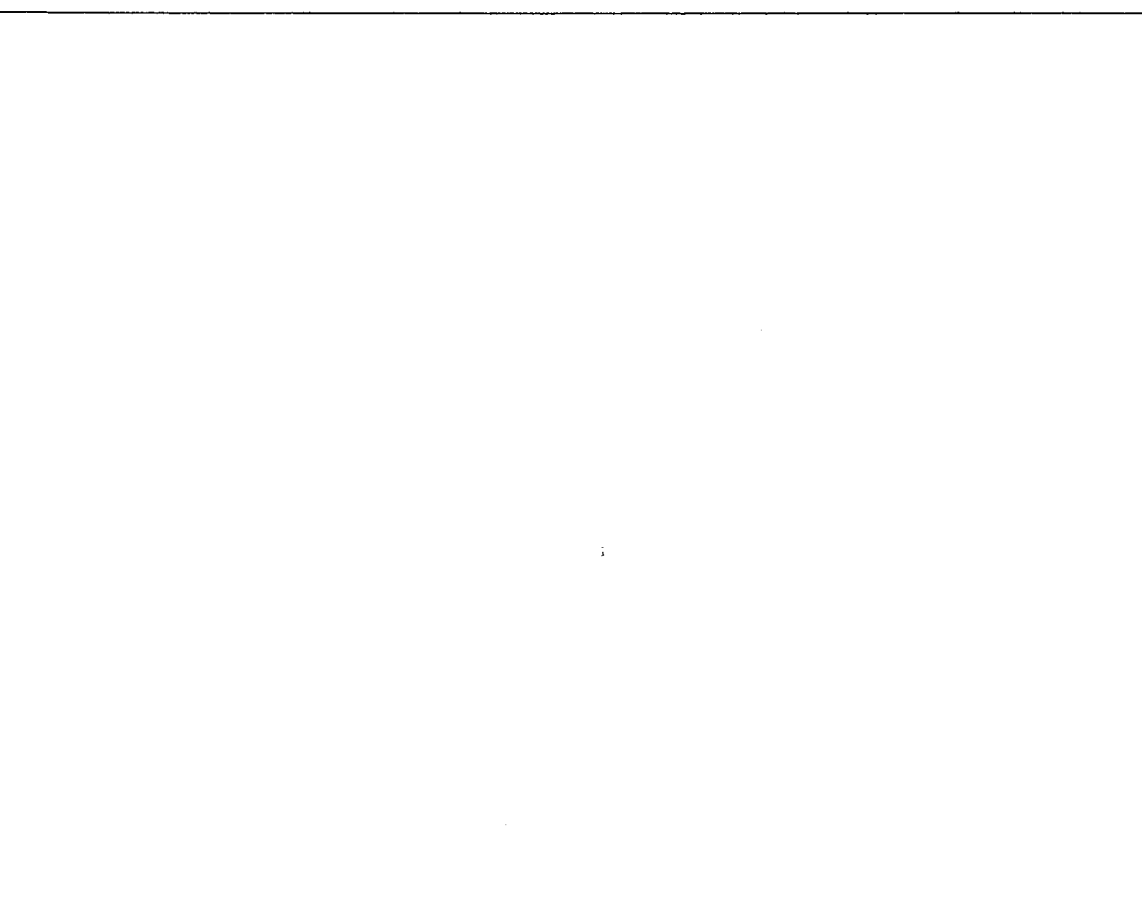
Typical Truss at Party Wall at Roof Step 15



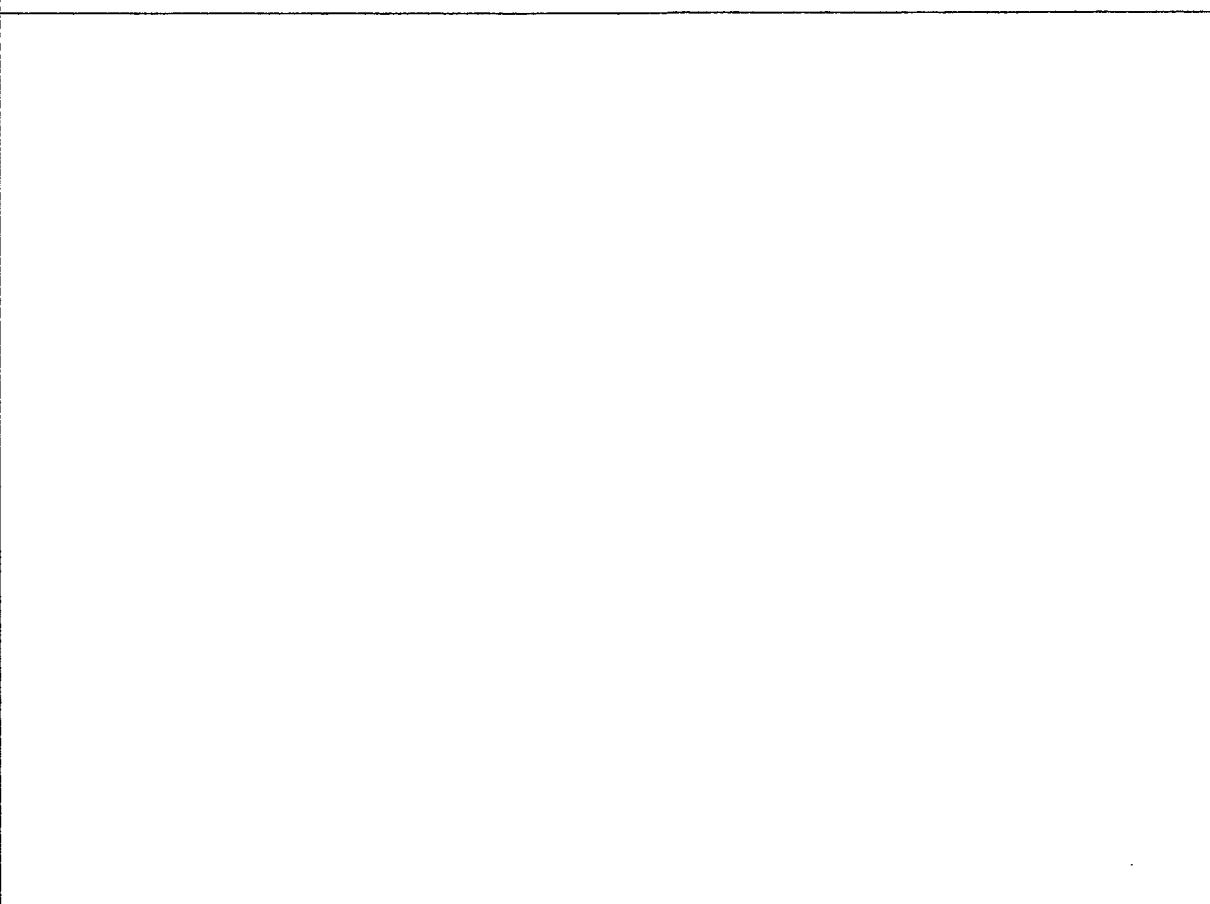
16



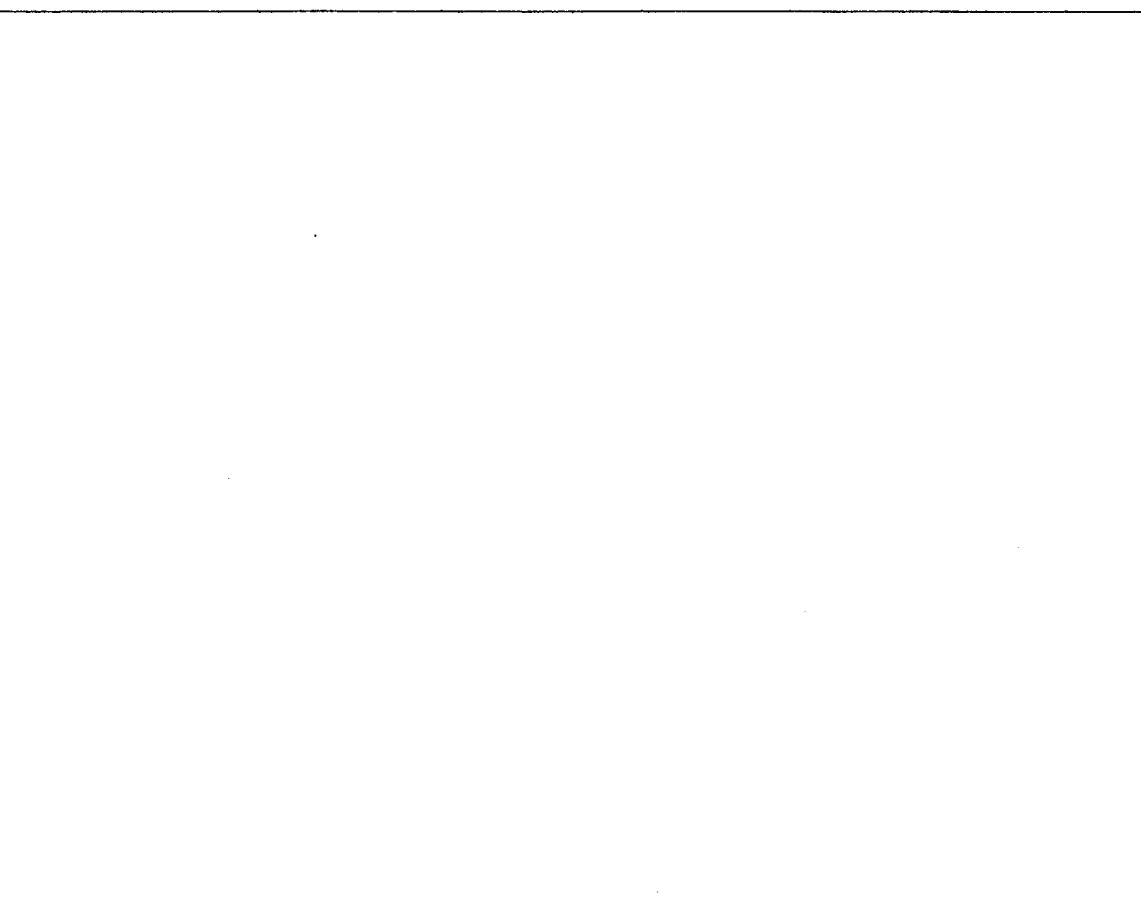
17



18

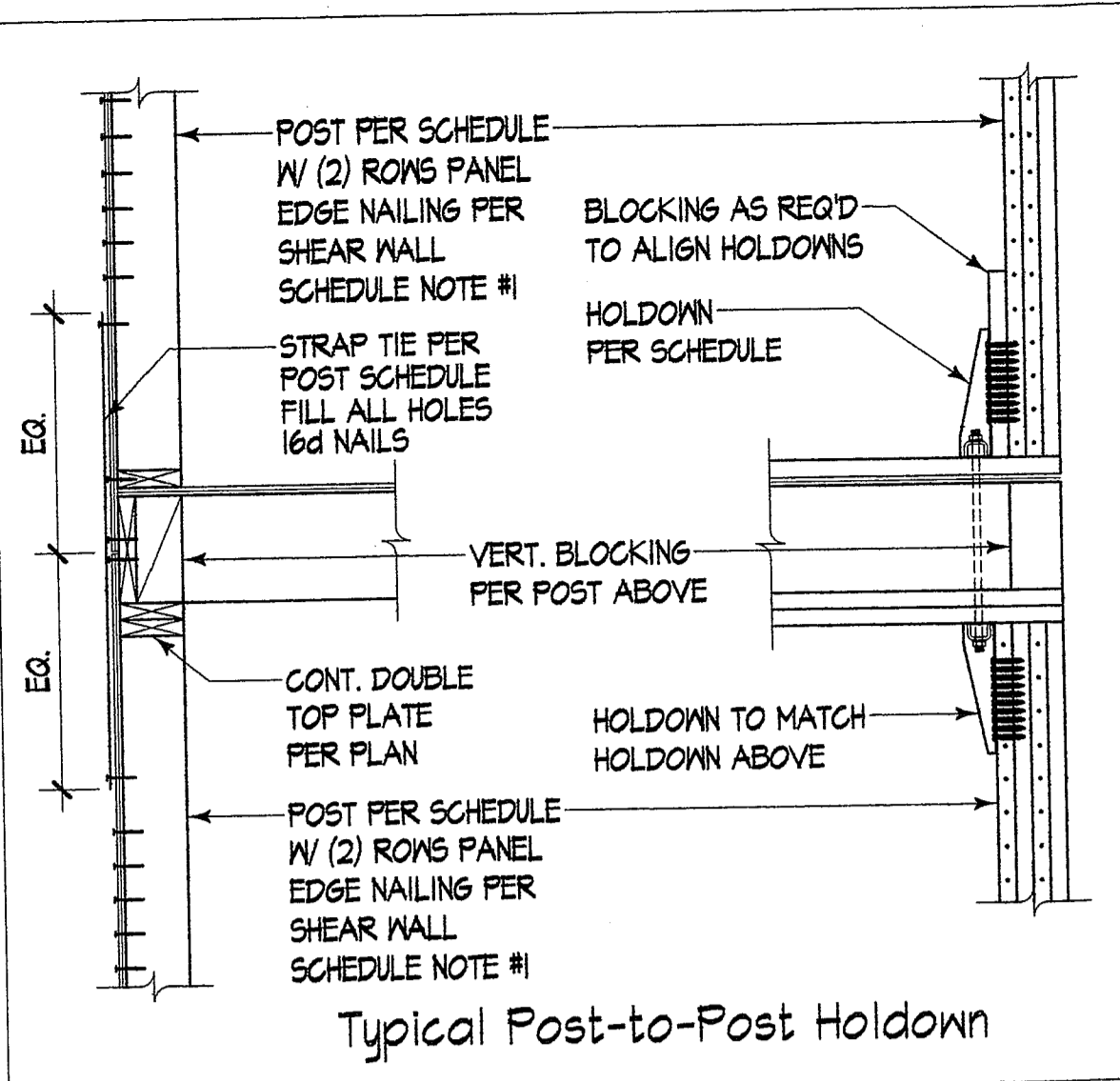


19

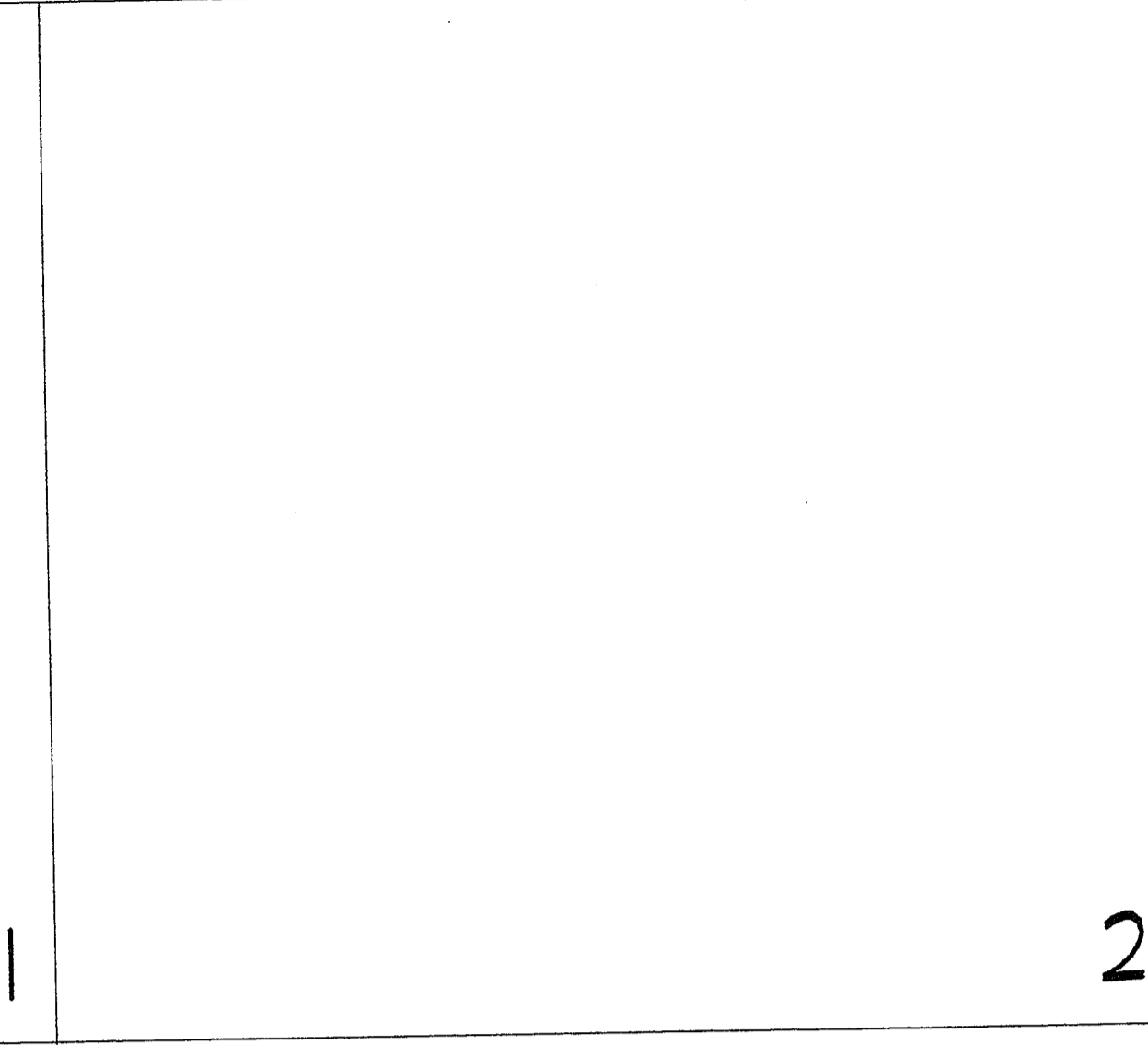


20

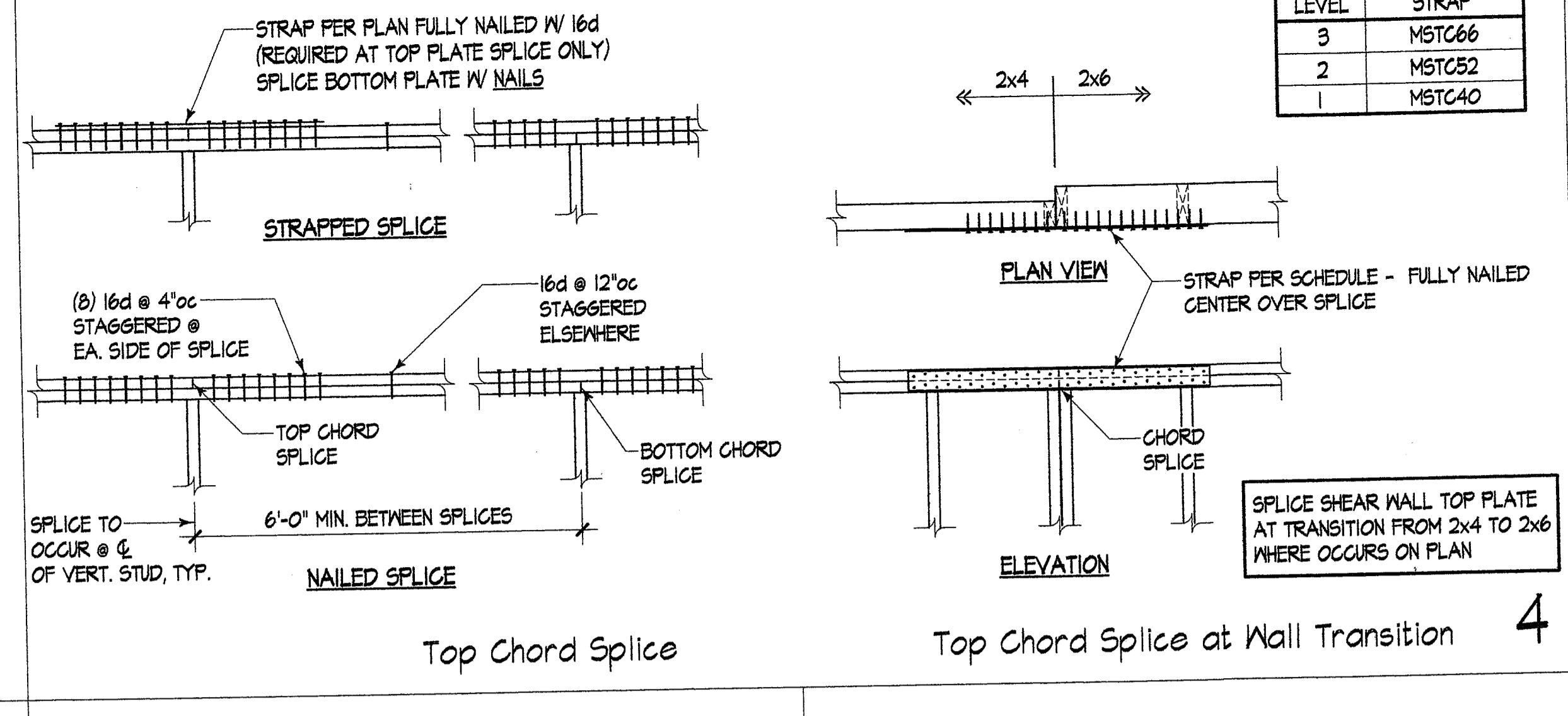




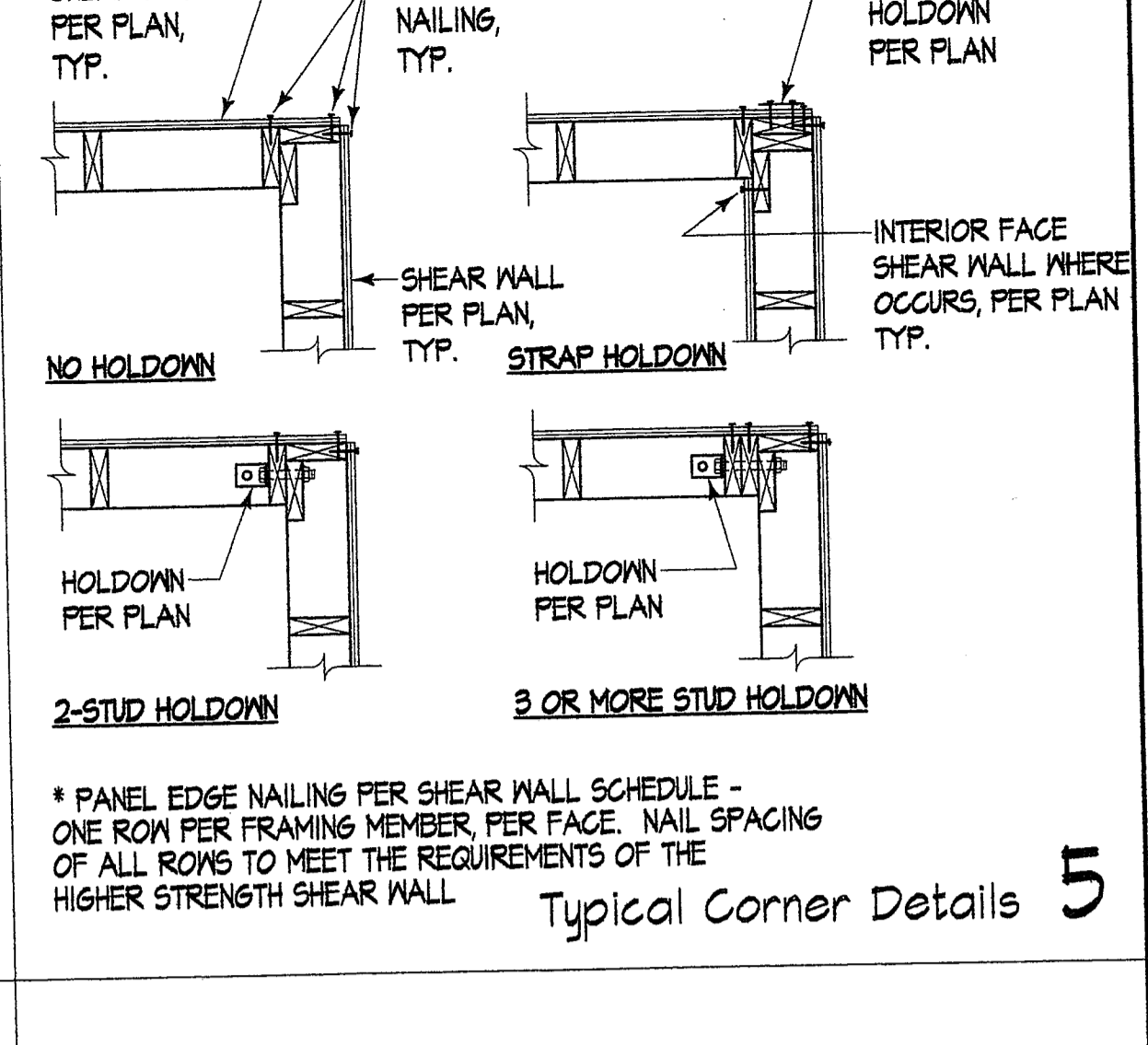
Typical Post-to-Post Holddown



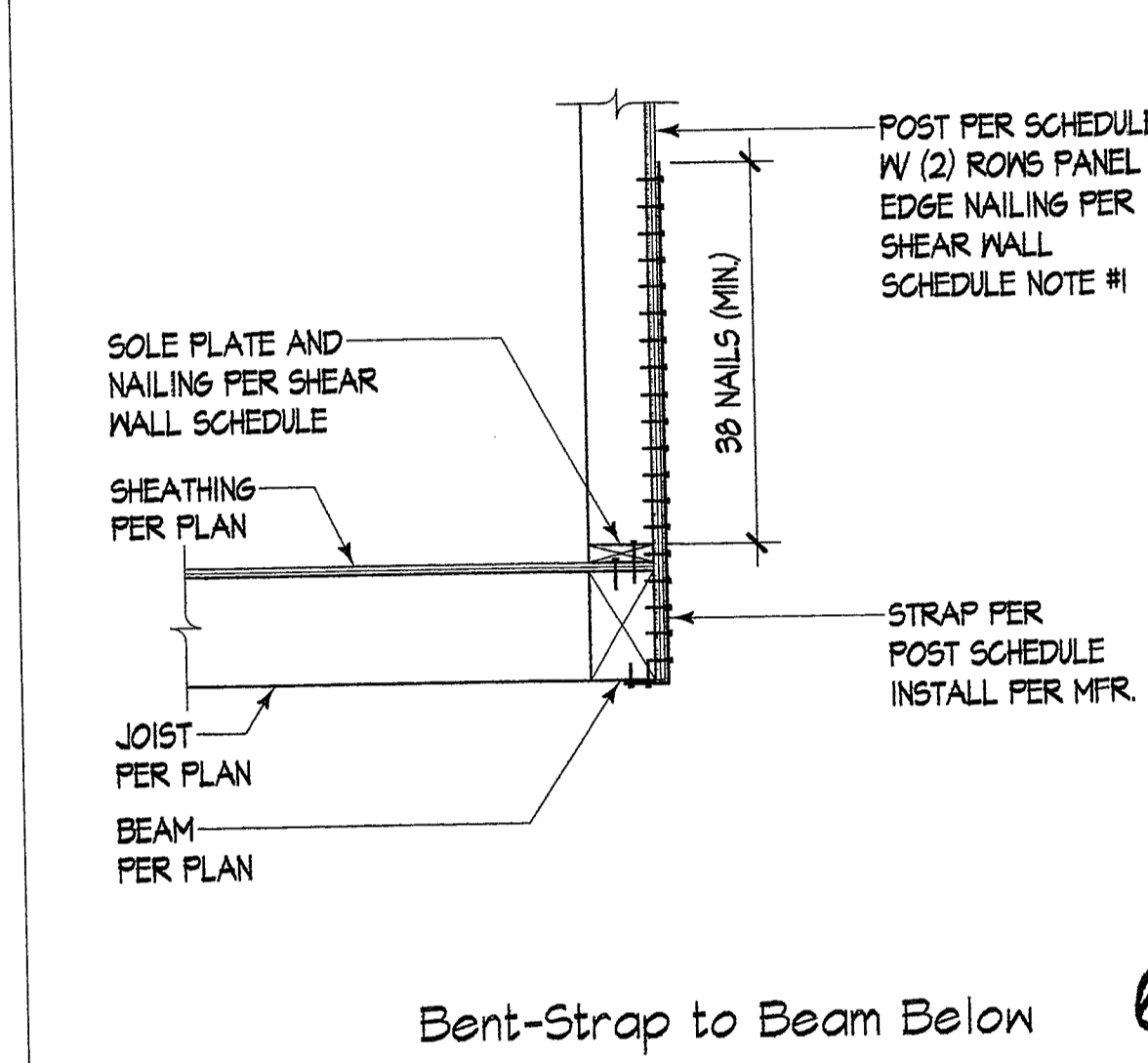
Top Chord Splice



Top Chord Splice at Wall Transition



Typical Corner Details



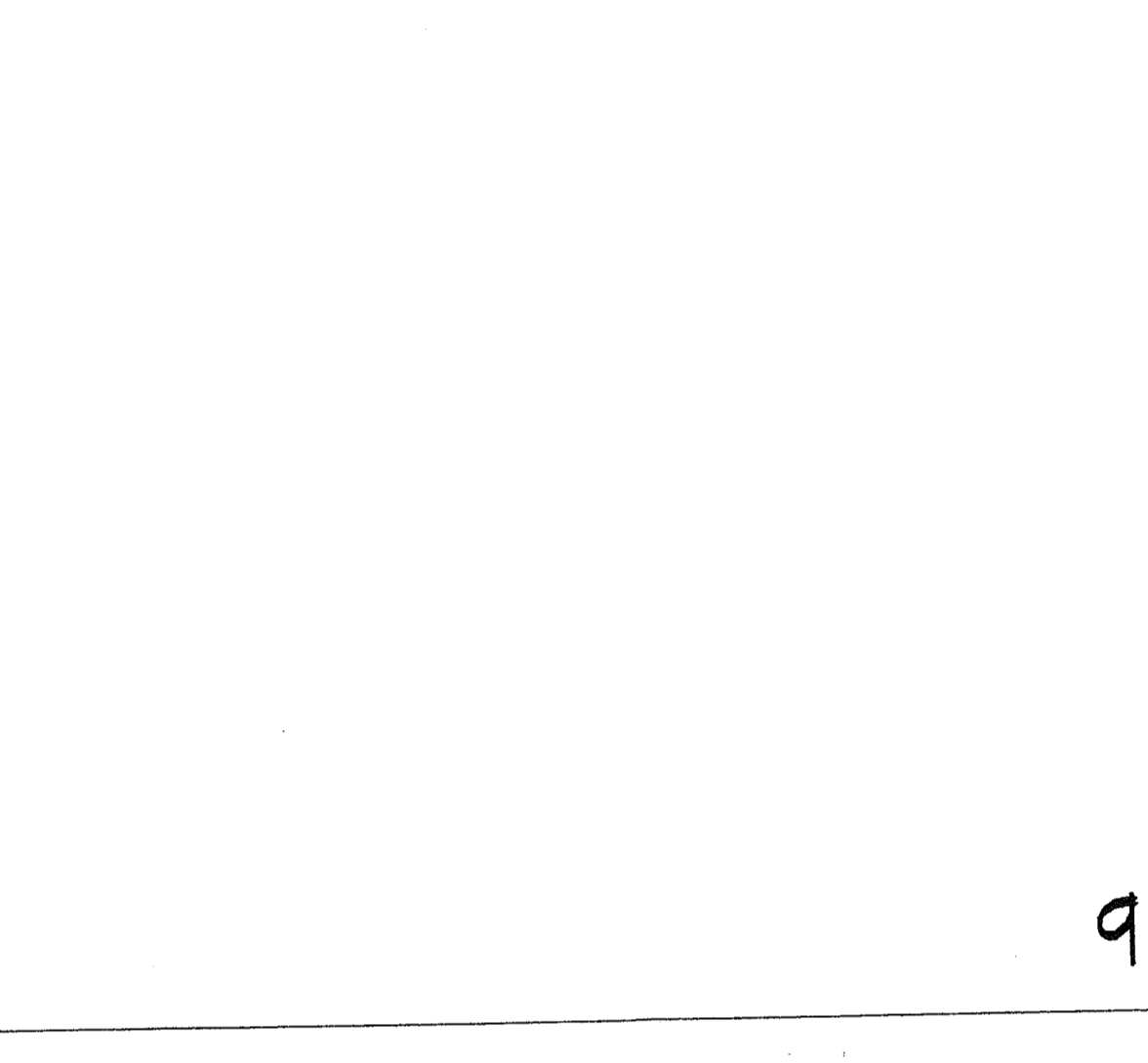
Bent-Strap to Beam Below



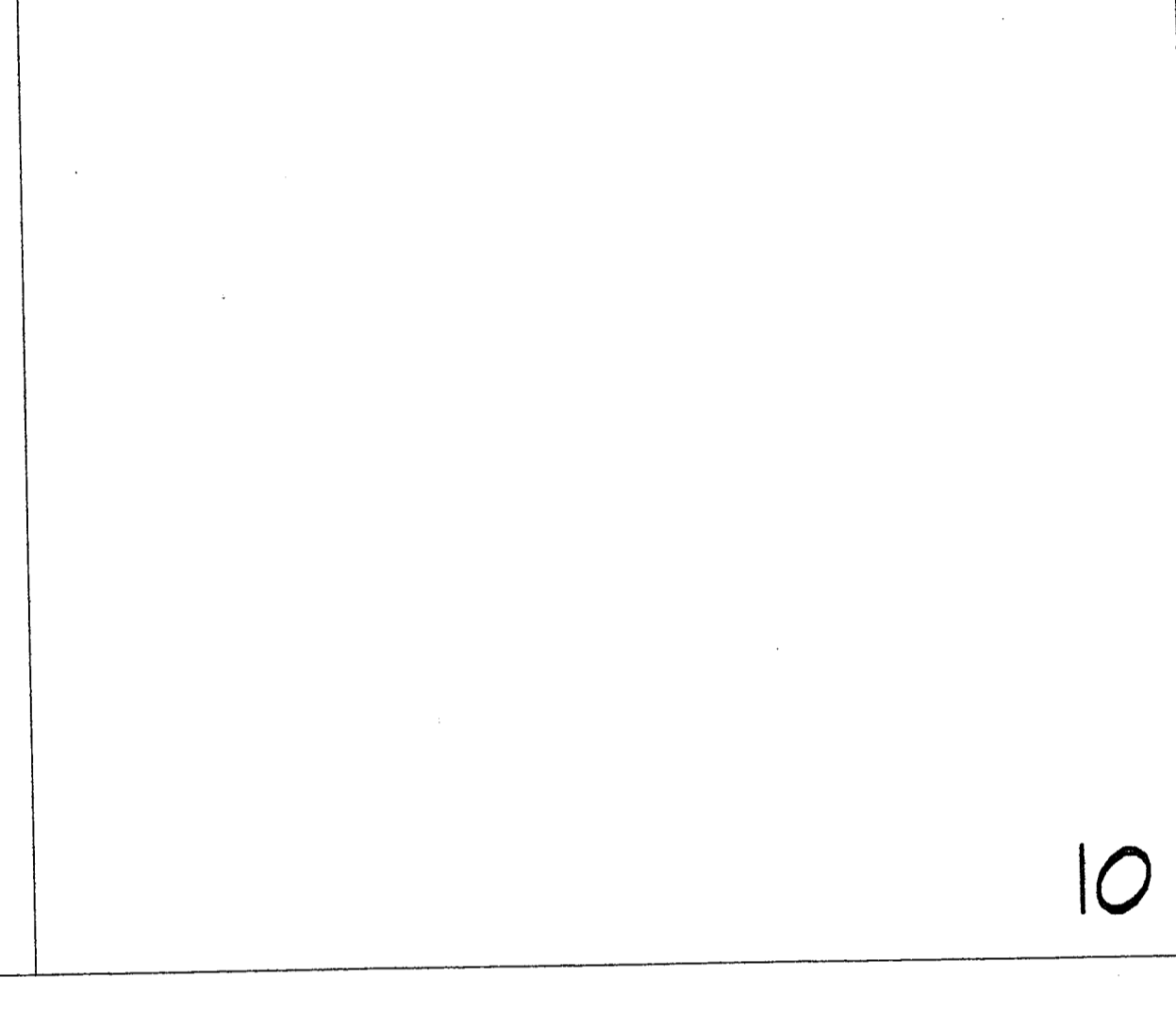
Drag Type BK



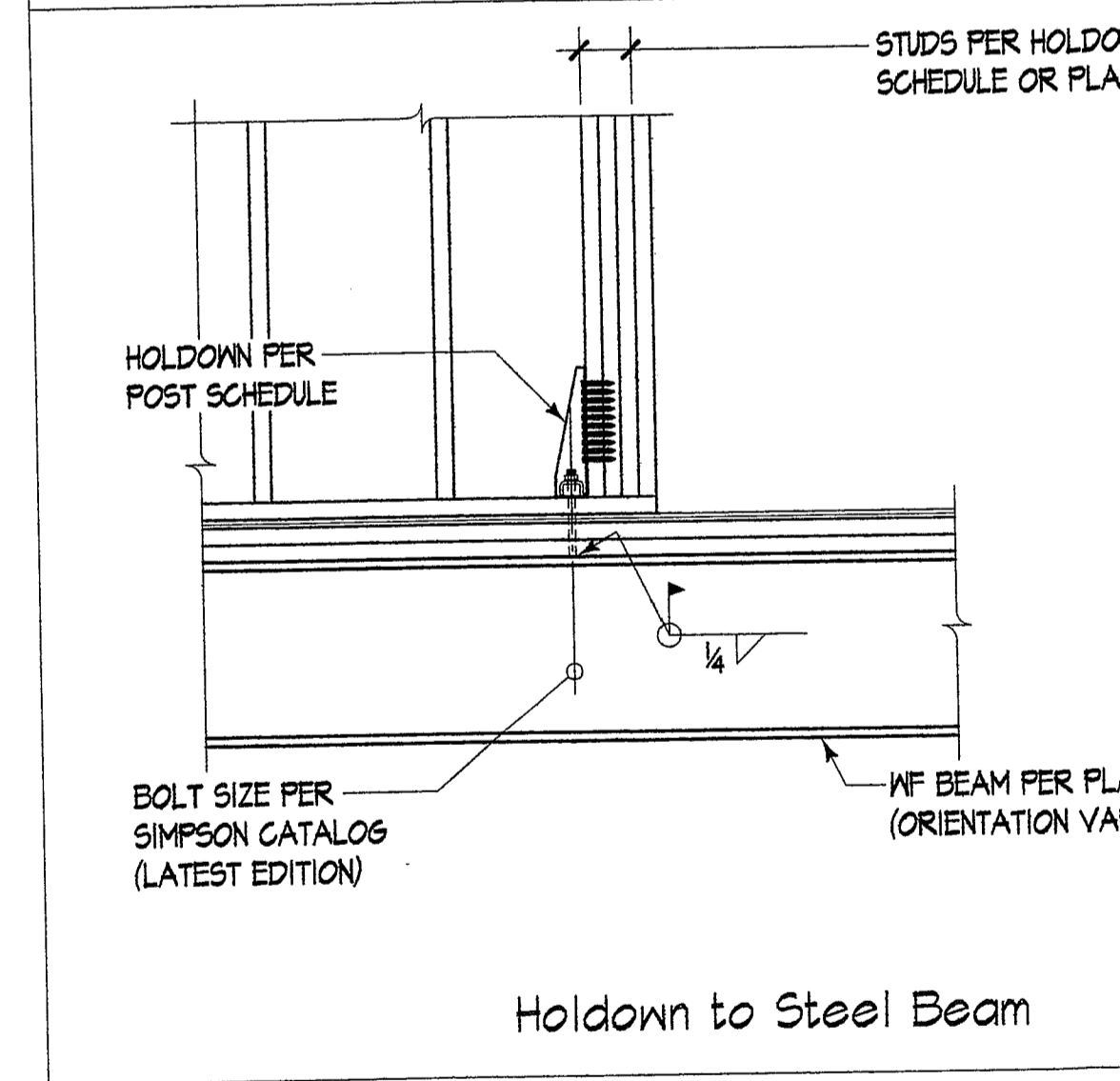
Drag Type TK



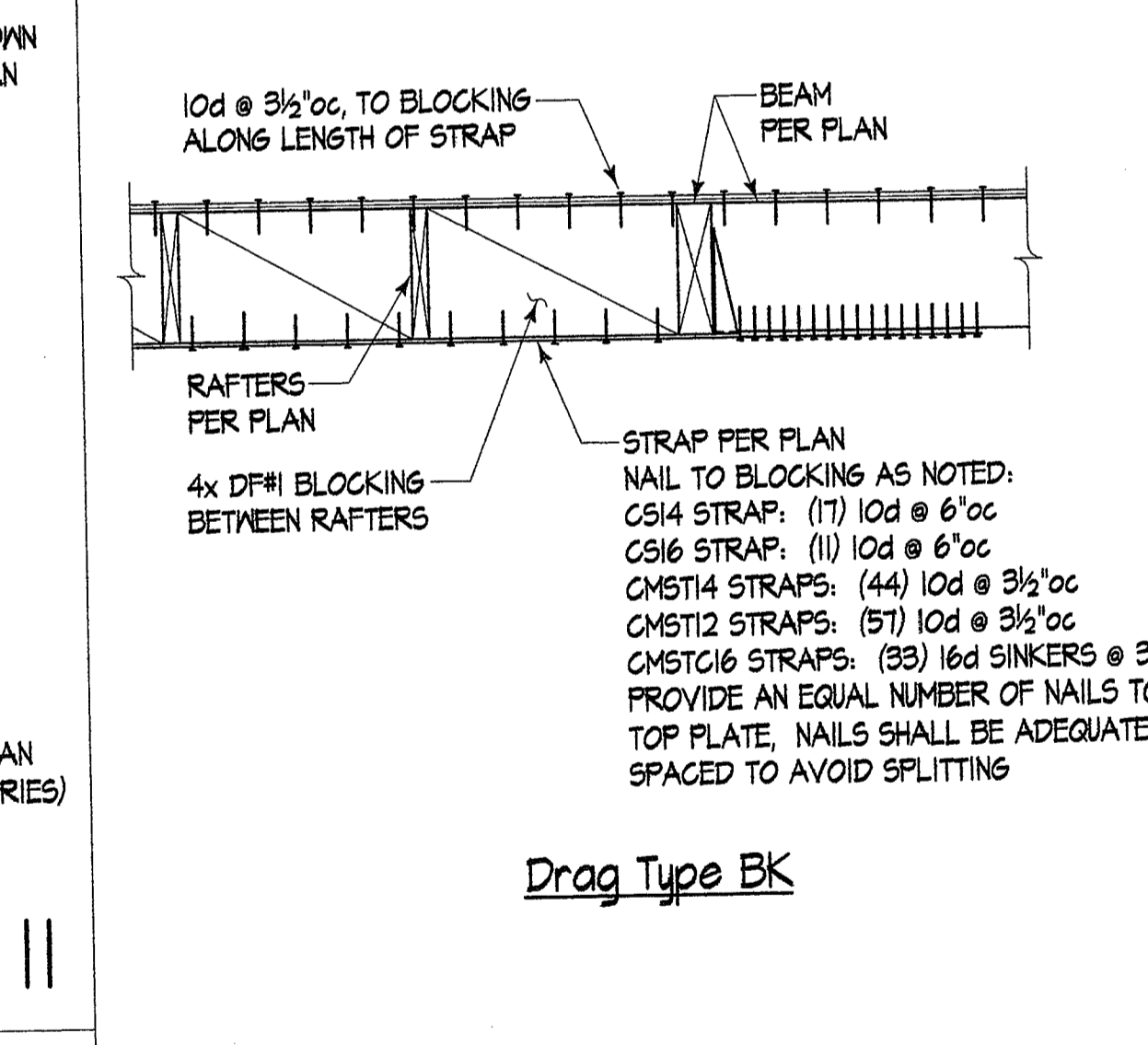
Drag Type TB



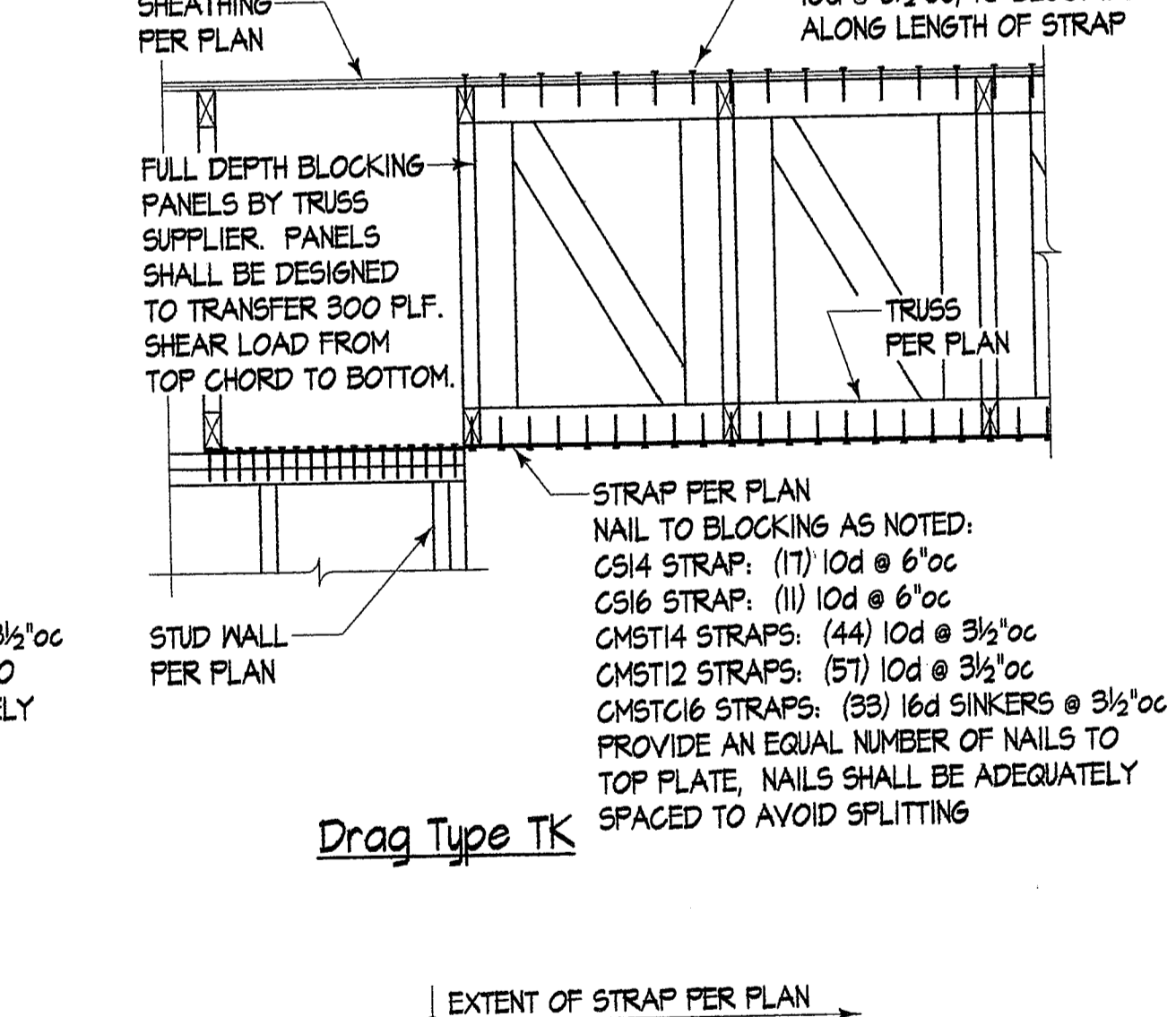
Drag Type TW



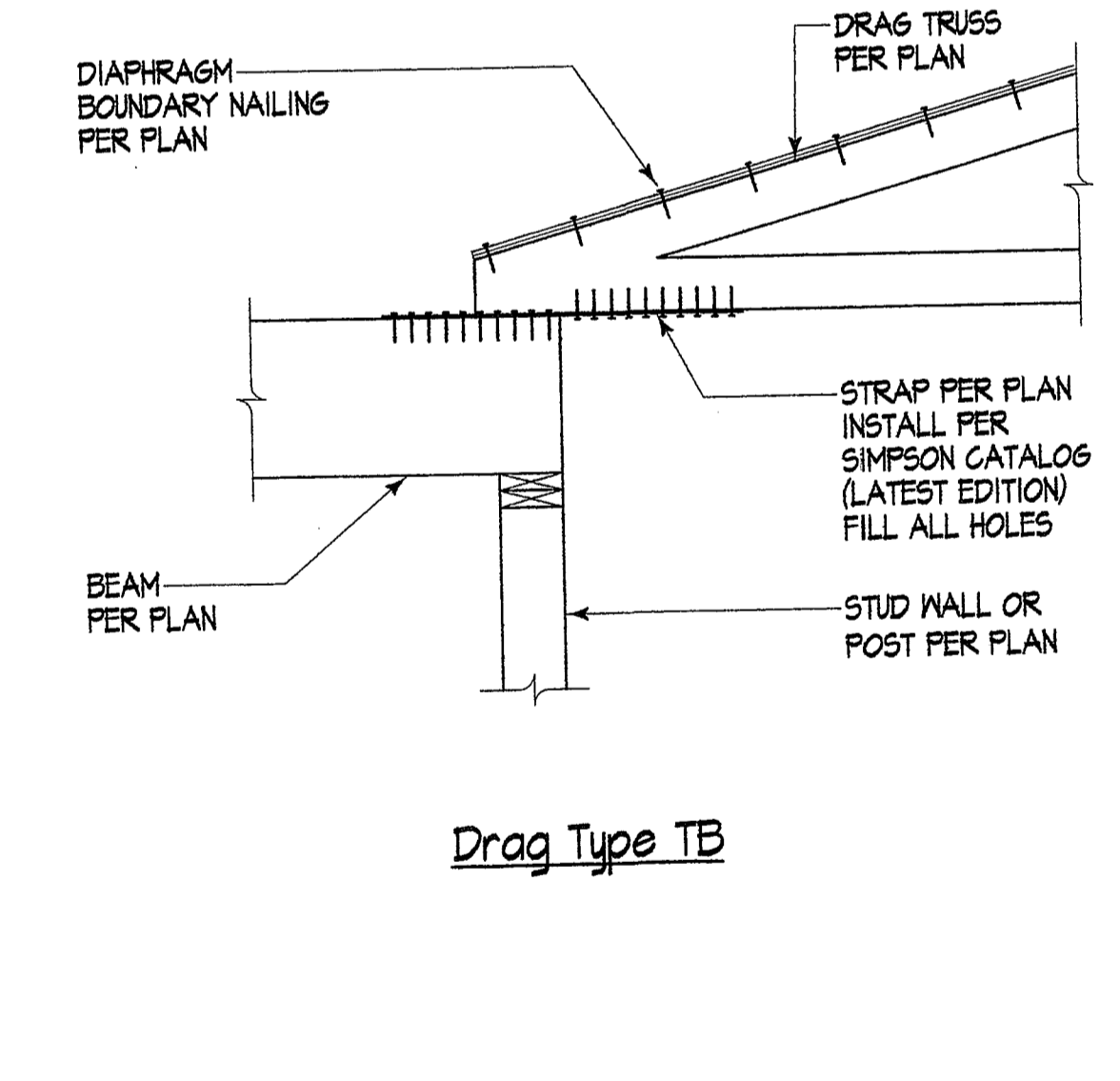
Holdown to Steel Beam



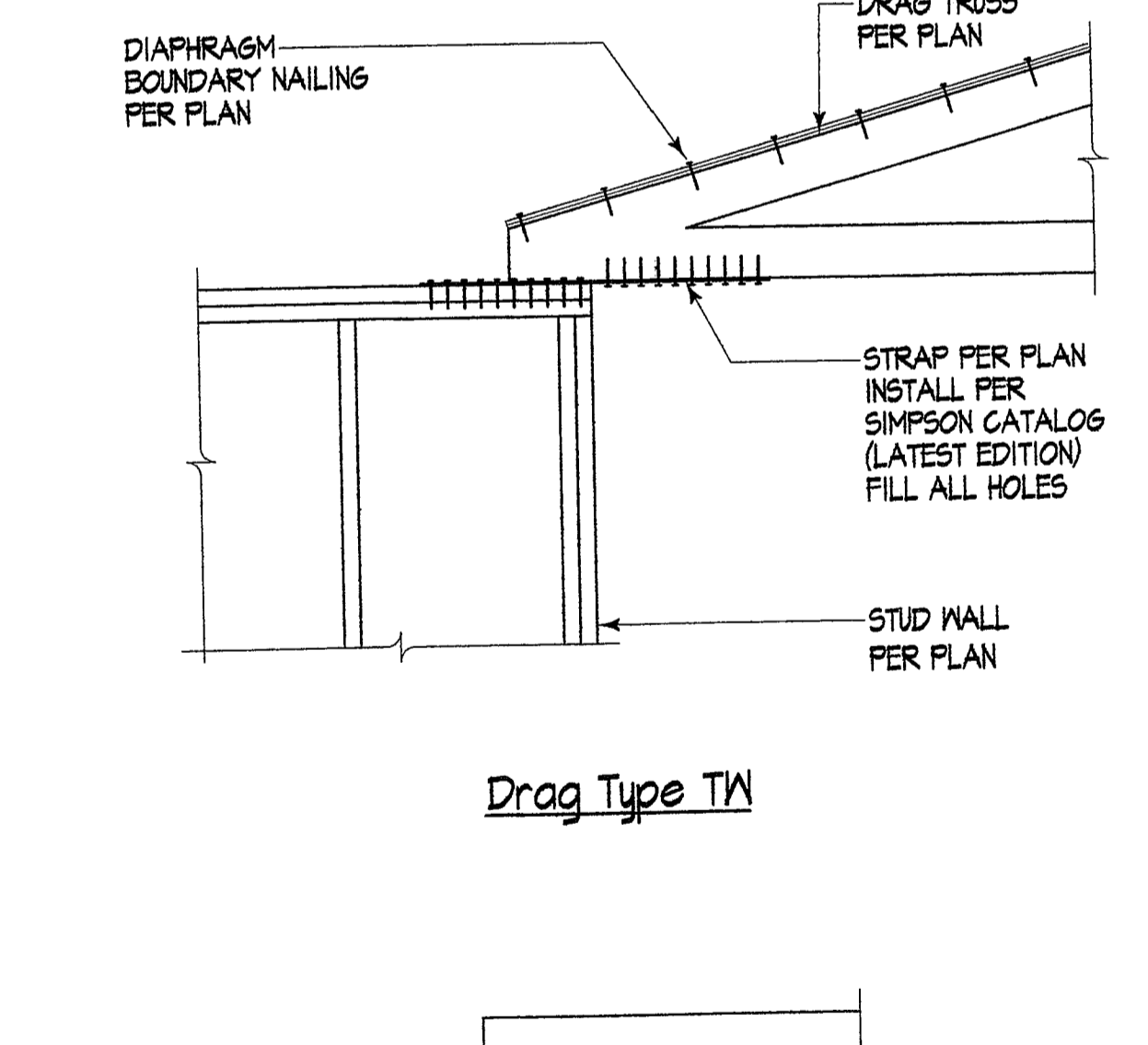
Drag Type FK



Drag Type WK



Drag Type BB



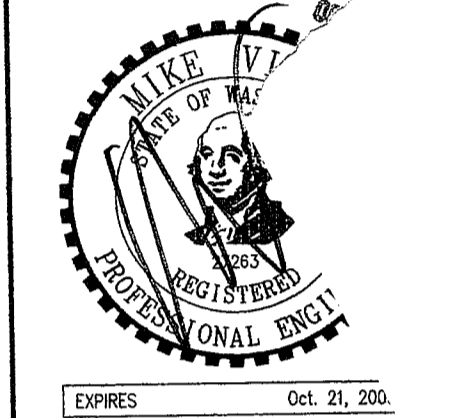
Drag Type BW

Drag Connections

**COPYRIGHT NOTICE**  
 THIS PLAN IS ISSUED FOR SINGLE USE PURPOSES BY THE CLIENT INDICATED. REPRODUCTION OR USE OF THIS DOCUMENT WITHOUT THE EXPRESS WRITTEN CONSENT OF ARCHITECT, JOHN G. NASON, IS PROHIBITED. ARCHITECT MAINTAINS ALL RIGHTS UNDER STATE AND FEDERAL LAW, INCLUDING COPYRIGHT.

**LIABILITY LIMIT NOTICE**  
 NOTICE: DRAWING PACKAGE PREPARED FOR PERMITTING REVIEW ONLY. ARCHITECT NOT RESPONSIBLE FOR CONSTRUCTION COMPLIANCE UNLESS RETAINED FOR FULL INSPECTION SERVICES.

**NOTICE TO CONTRACTOR**  
 CONTRACTOR SHALL VERIFY ALL CONDITIONS AND DIMENSIONS AT THE JOB SITE AND NOTIFY THE ARCHITECT OF ANY DIMENSIONAL ERRORS, OMISSIONS OR DISCREPANCIES BEFORE BEGINNING OR FABRICATING ANY WORK. DO NOT SCALE DRAWINGS.



3455 SOUTH 344th WAY  
 SUITE 230  
 FEDERAL WAY, WA 98001  
 VOICE: (253) 825-0810  
 FAX: (253) 825-0813

**AZURE RIDGE APT'S.**  
 AN APARTMENT COMMUNITY KING COUNTY, WA  
 FOR: GOG INVESTMENTS (MR. GLENN GONZALES)  
 23414 SE 251st. PLACE  
 MAPLE VALLEY, WA 98038  
 206-313-0190

**TIMBER FRAMING DETAILS**

PROJECT NO. : 07-134  
 DRAWN : WSW / TWW  
 DESIGN : BTS  
 CHECKED : MDV  
 ISSUE DATE : 10/12/07  
 LATEST REV. : .